

**Final Environmental Impact Statement  
and  
Section 4(f) Evaluation**

**September 2008**

Submitted pursuant to 42 U.S.C. 4332(2)(c) and 49 U.S.C. 303

by

Federal Highway Administration  
Utah Department of Transportation  
Utah Transit Authority

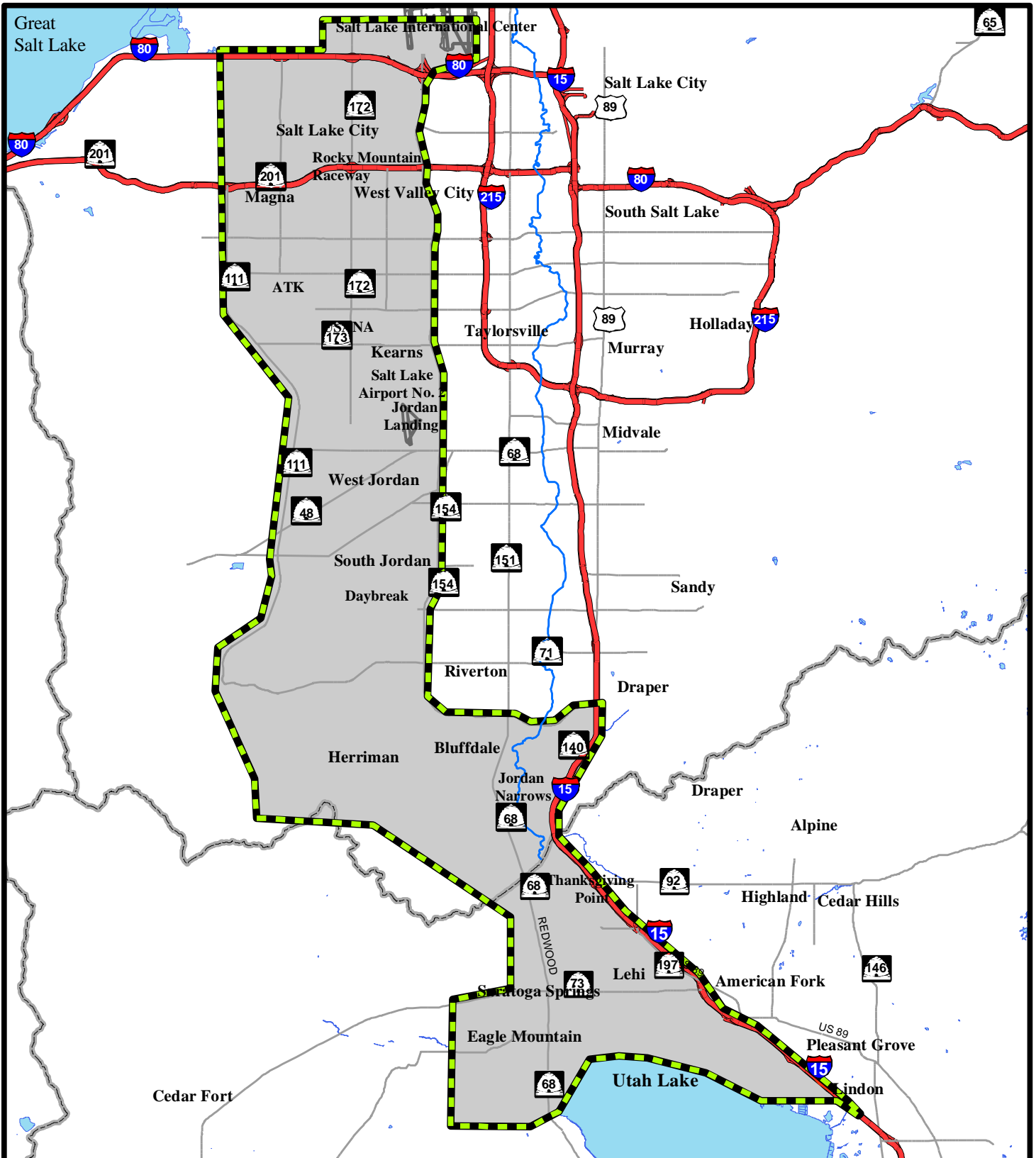
FHWA-UT-EIS-07-02-F

\*SP-0067(3)0

**Volume 7 of 8**

*Figures*





ENVIRONMENTAL  
IMPACT STATEMENT

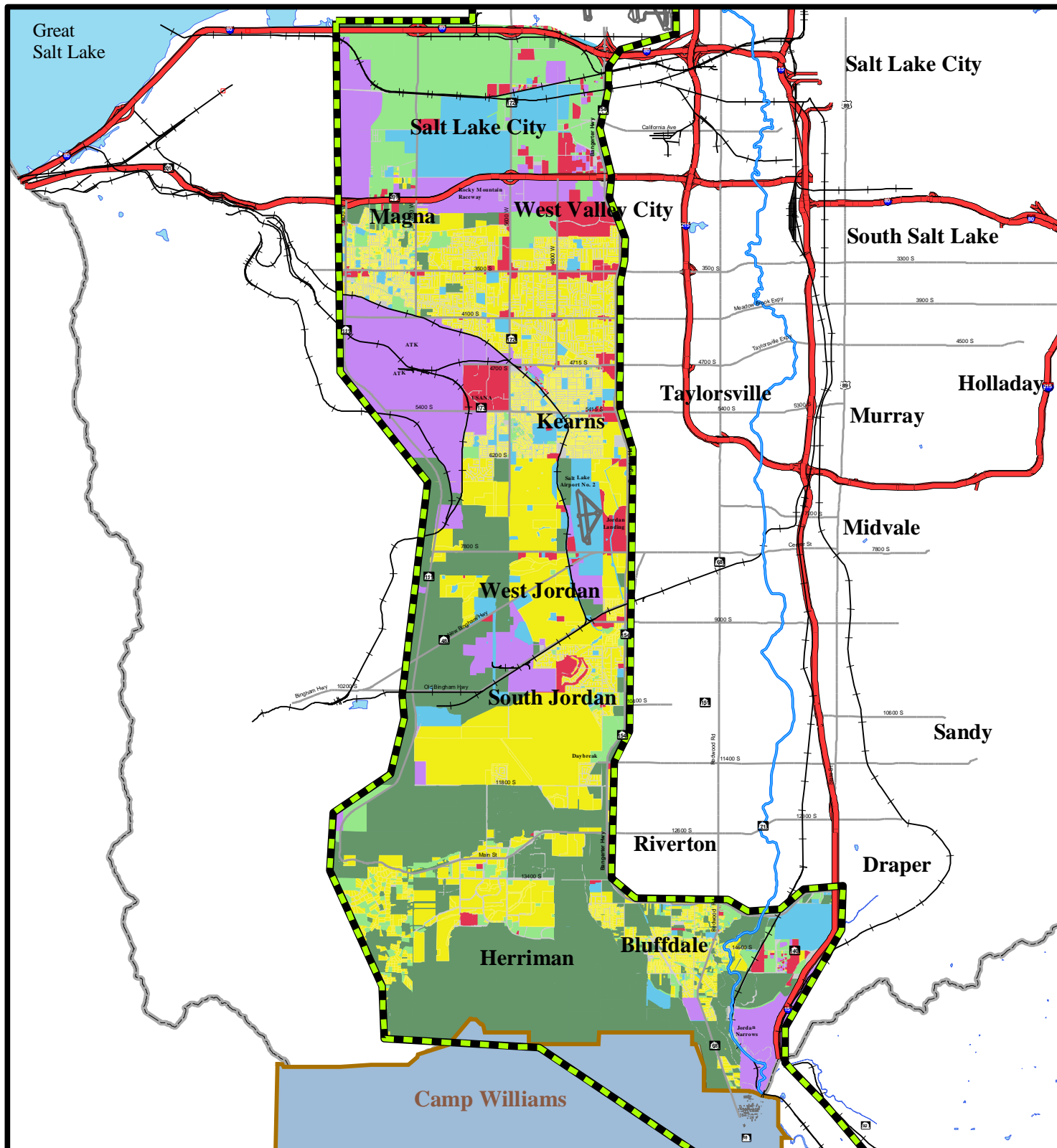
- ▬ Study Area Boundary
- ▬ Interstate/Freeway
- ▬ Collector/Arterial

0 1 2 3 4 5 Mile



Land Use Impact  
Analysis Area

Figure 4-1



ENVIRONMENTAL  
IMPACT STATEMENT

- |                     |                            |
|---------------------|----------------------------|
| Study Area Boundary | Commercial                 |
| Interstate/Freeway  | Industrial                 |
| Collector/Arterial  | Institutional              |
| <b>Land Use</b>     | No Data                    |
| Agriculture         | Open Space/Protection Area |
| Camp Williams       | Residential                |

Land Use -  
Salt Lake County

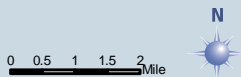
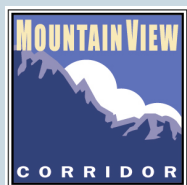
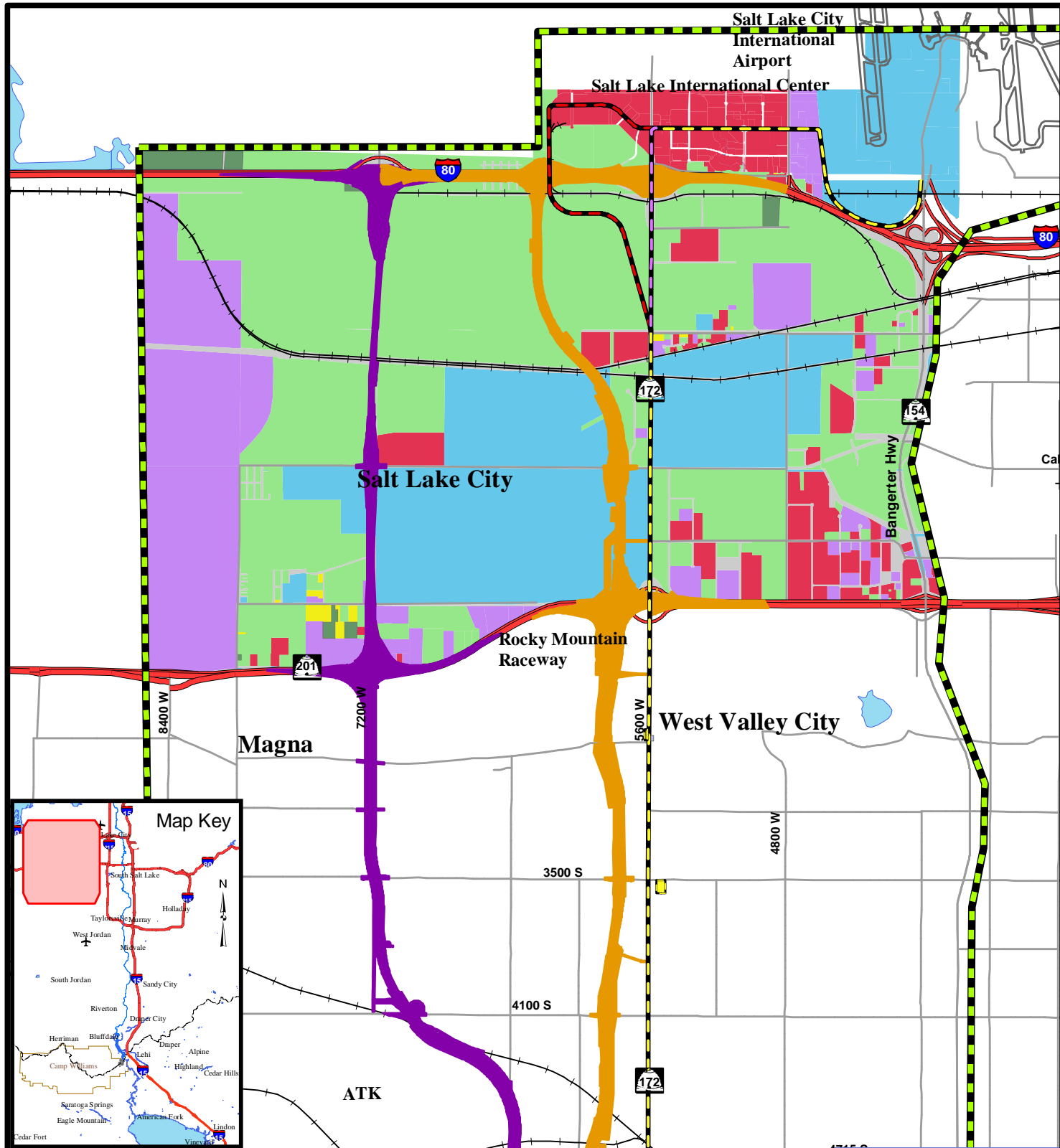
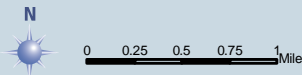


Figure 4-2



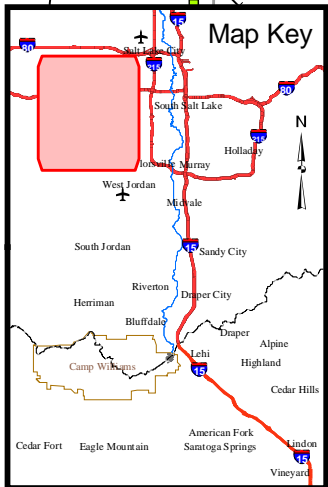
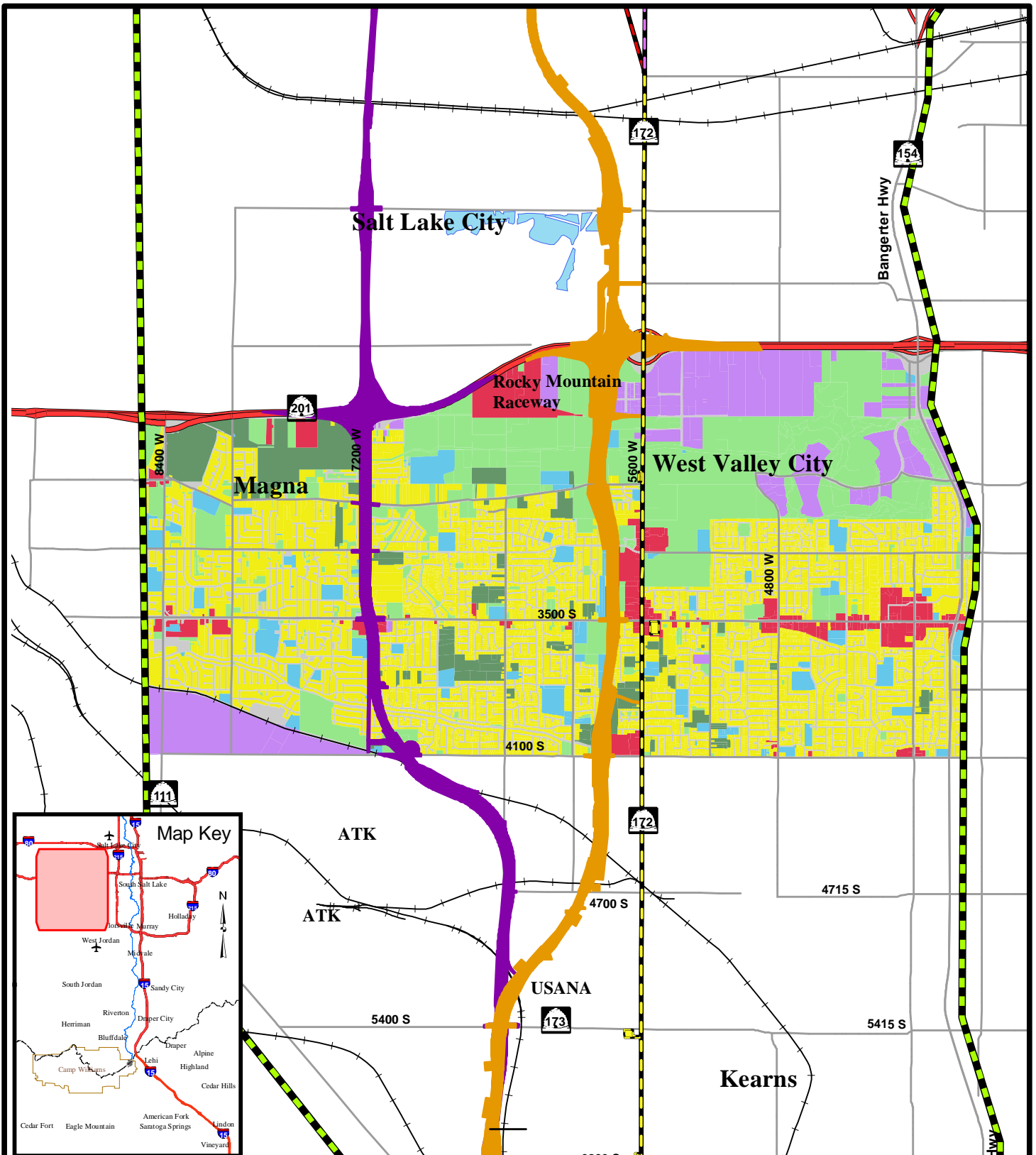
ENVIRONMENTAL  
IMPACT STATEMENT

- |                    |                    |                            |
|--------------------|--------------------|----------------------------|
| MVC Study Area     | Transit            | Agriculture                |
| Interstate/Freeway | Center & Mixed Use | Commercial                 |
| Collector/Arterial | Center Running     | Industrial                 |
| 7200 West Freeway  | Mixed Use          | Institutional              |
| 5800 West Freeway  | Park-N-Ride Lot    | No Data                    |
|                    |                    | Open Space/Protection Area |
|                    |                    | Residential                |



Land Use - I-80 to  
SR 201

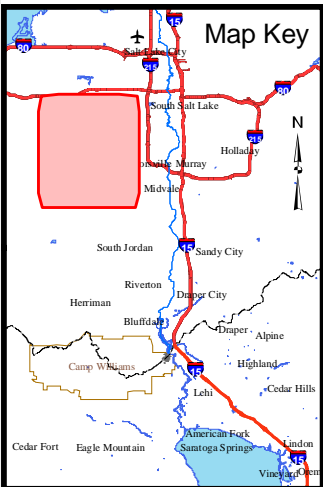
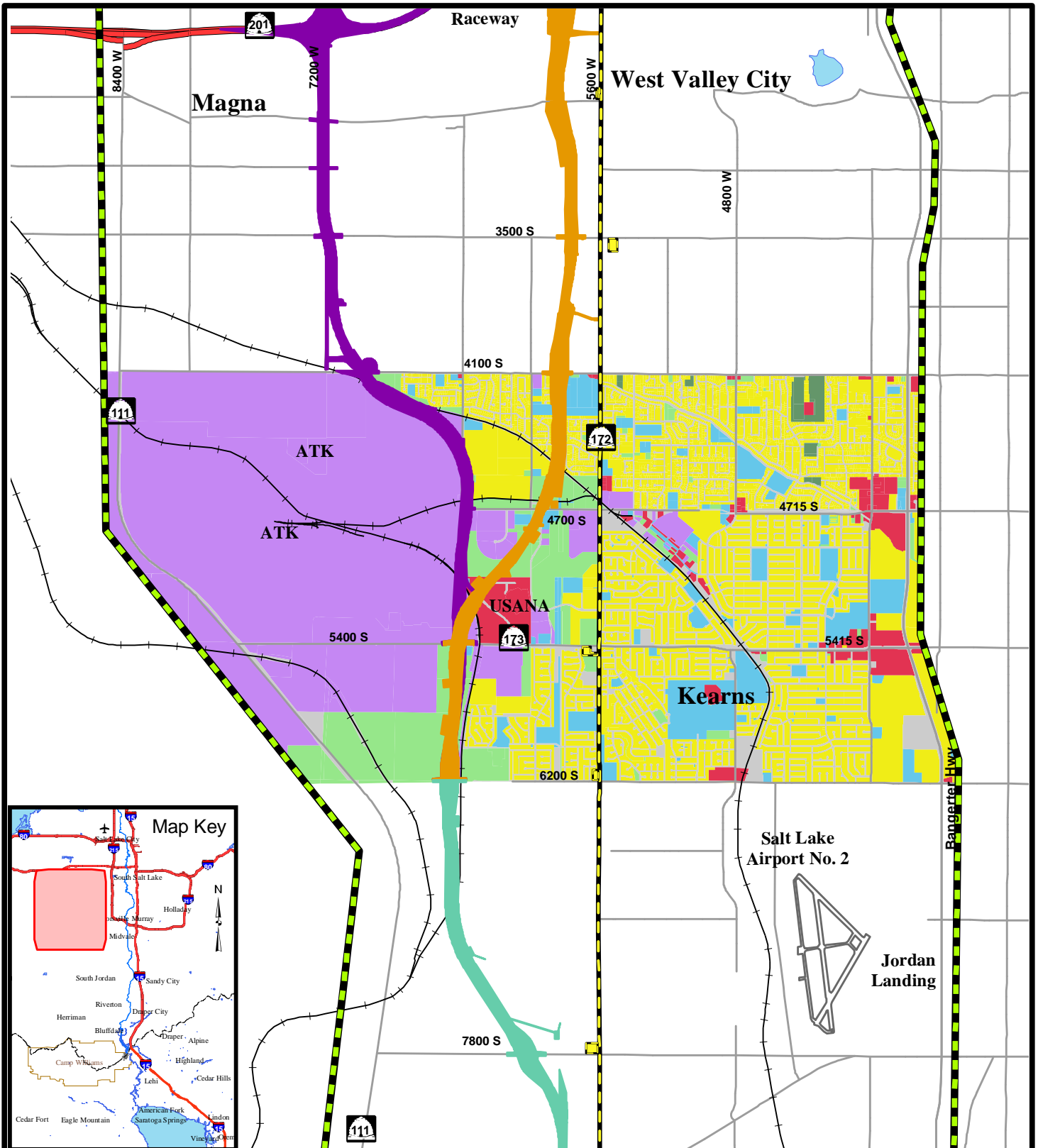
Figure 4-3



MVC Study Area	Transit Center & Mixed Use	Land Use Agriculture
Interstate/Freeway	Center Running	Commercial
Collector/Arterial	Mixed Use	Industrial
5800 West Freeway	Park-N-Ride Lot	Institutional
7200/5800 West Freeway		No Data
7200 West Freeway		Open Space/Protection Area
		Residential

Land Use - SR 201 to 4100 South

Figure 4-4



ENVIRONMENTAL  
IMPACT STATEMENT

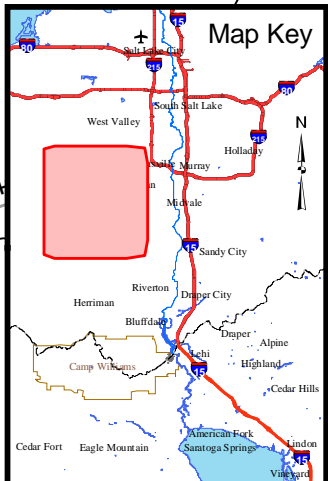
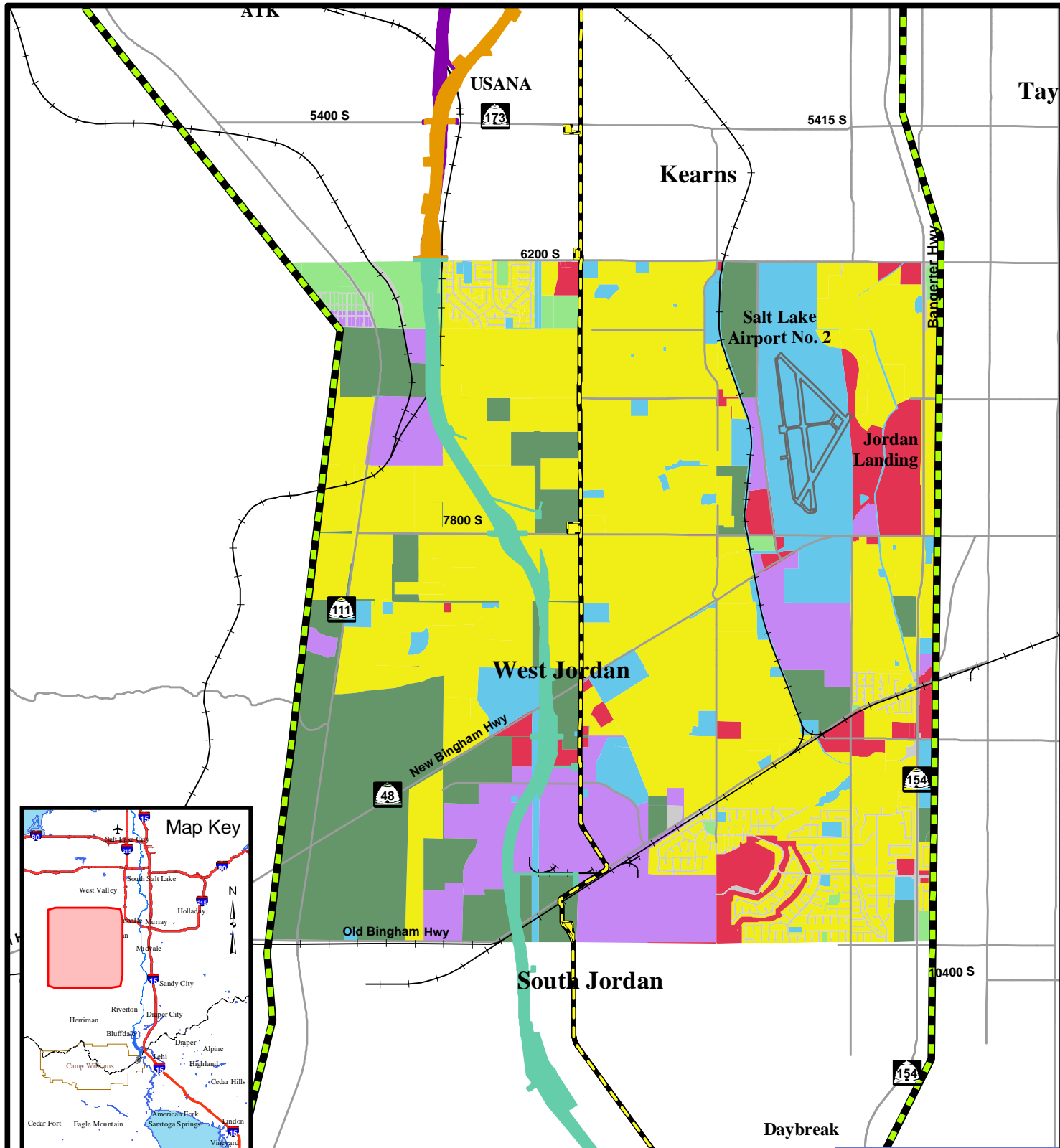
- MVC Study Area
- Interstate/Freeway
- Collector/Arterial
- 5800 West Freeway
- 7200/5800 West Freeway
- 7200 West Freeway

- Transit
- Center & Mixed Use
- Center Running
- Mixed Use
- Park-N-Ride Lot

- Agriculture
- Commercial
- Institutional
- No Data
- Open Space/Protection Area
- Residential

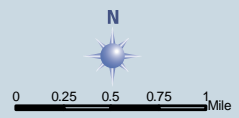
Land Use - 4100 South to  
6200 South

Figure 4-5



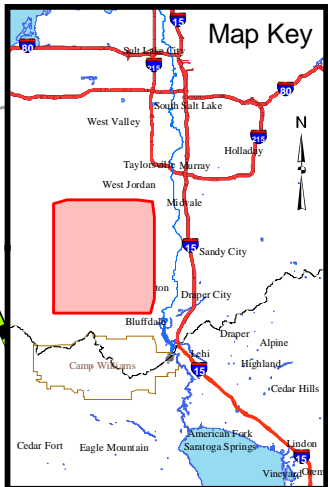
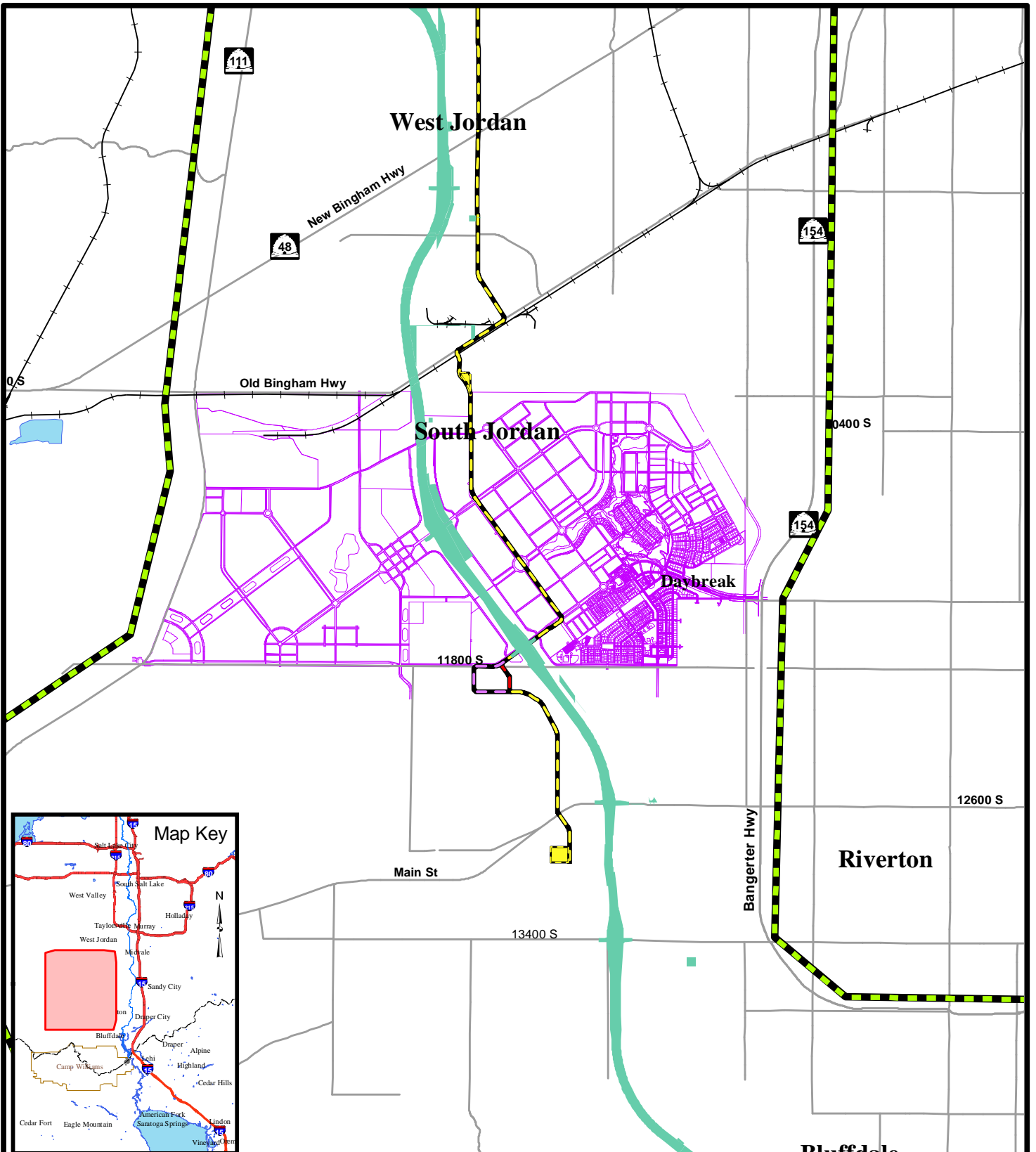
- Study Area Boundary
- Collector/Arterial
- 5800 West Freeway
- 7200/5800 West Freeway
- 7200 West Freeway
- Transit**
- Center & Mixed Use
- Park-N-Ride Lot

- Land Use**
- Agriculture
- Commercial
- Industrial
- Institutional
- No Data
- Open Space/Protection Area
- Residential

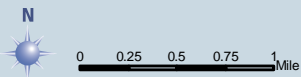


Land Use - 6200 South to 10200 South

**Figure 4-6**



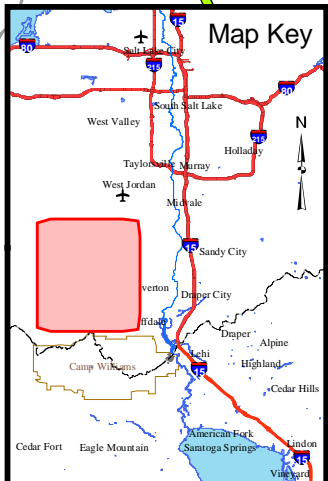
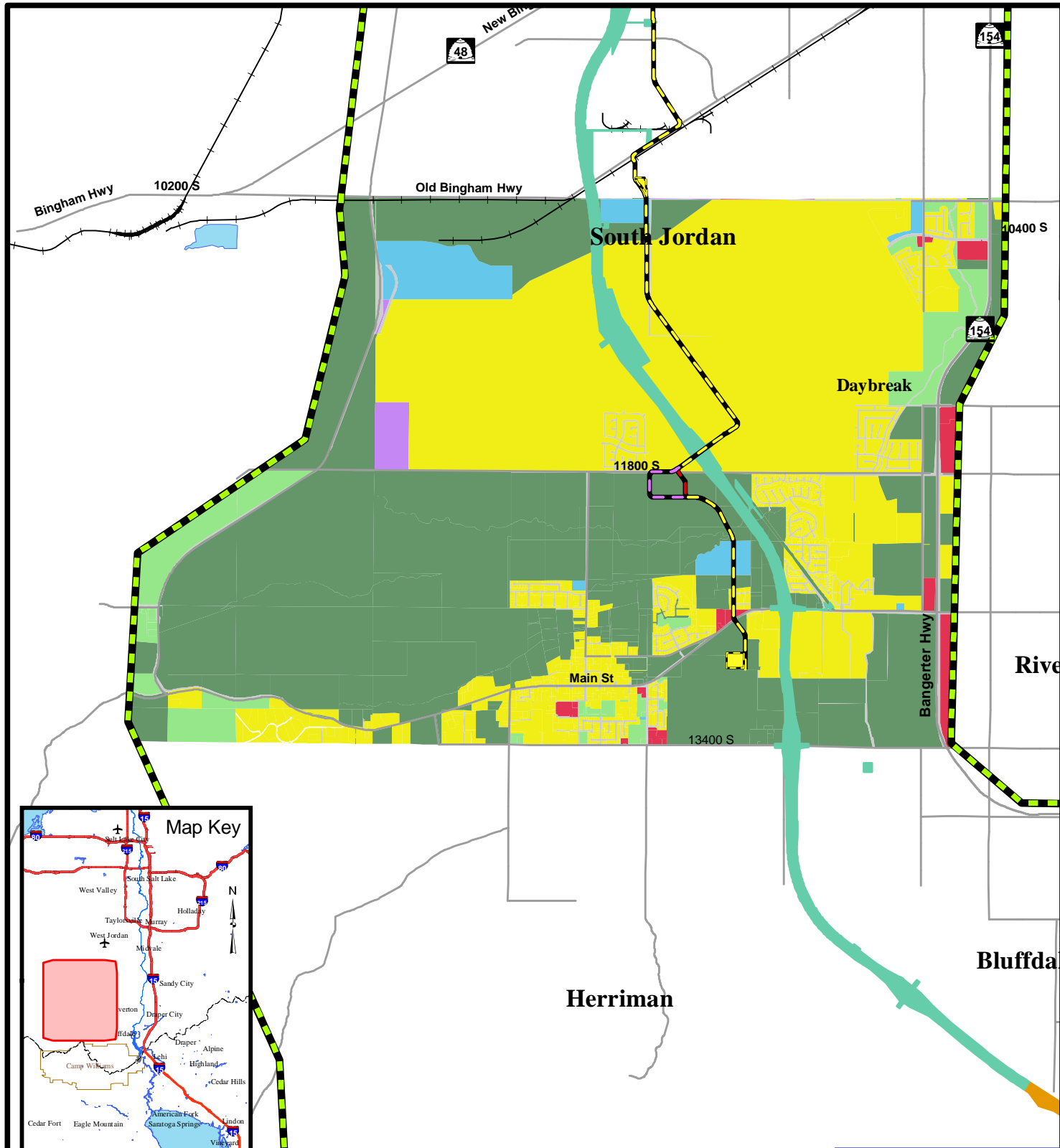
- Study Area Boundary
- Collector/Arterial
- 5800/7200 West Freeway
- Daybreak Development
- Transit
- Center & Mixed Use
- Center Running
- Mixed Use
- Park-N-Ride Lot



Land Use - Daybreak Development

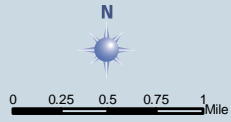
Figure 4-7





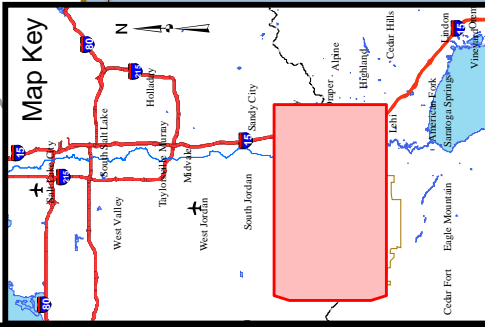
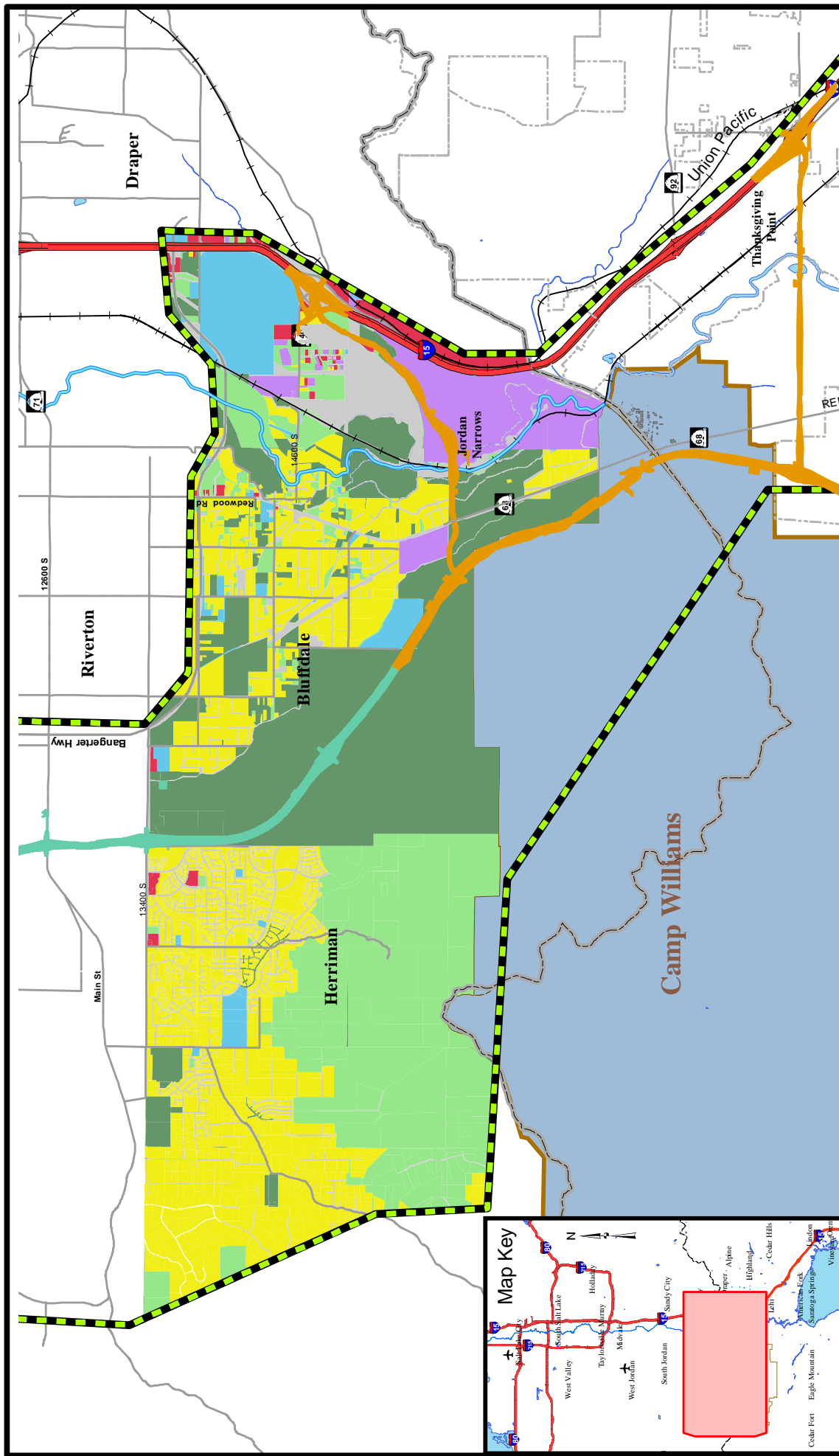
ENVIRONMENTAL  
IMPACT STATEMENT

- Study Area Boundary
- Collector/Arterial
- 7200/5800 West Freeway
- Transit
- Center & Mixed Use
- Center Running
- Mixed Use
- Park-N-Ride Lot
- Agriculture
- Commercial
- Industrial
- Institutional
- No Data
- Open Space/Protection Area
- Residential



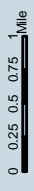
Land Use - 10200 South  
to 13400 South

Figure 4-8



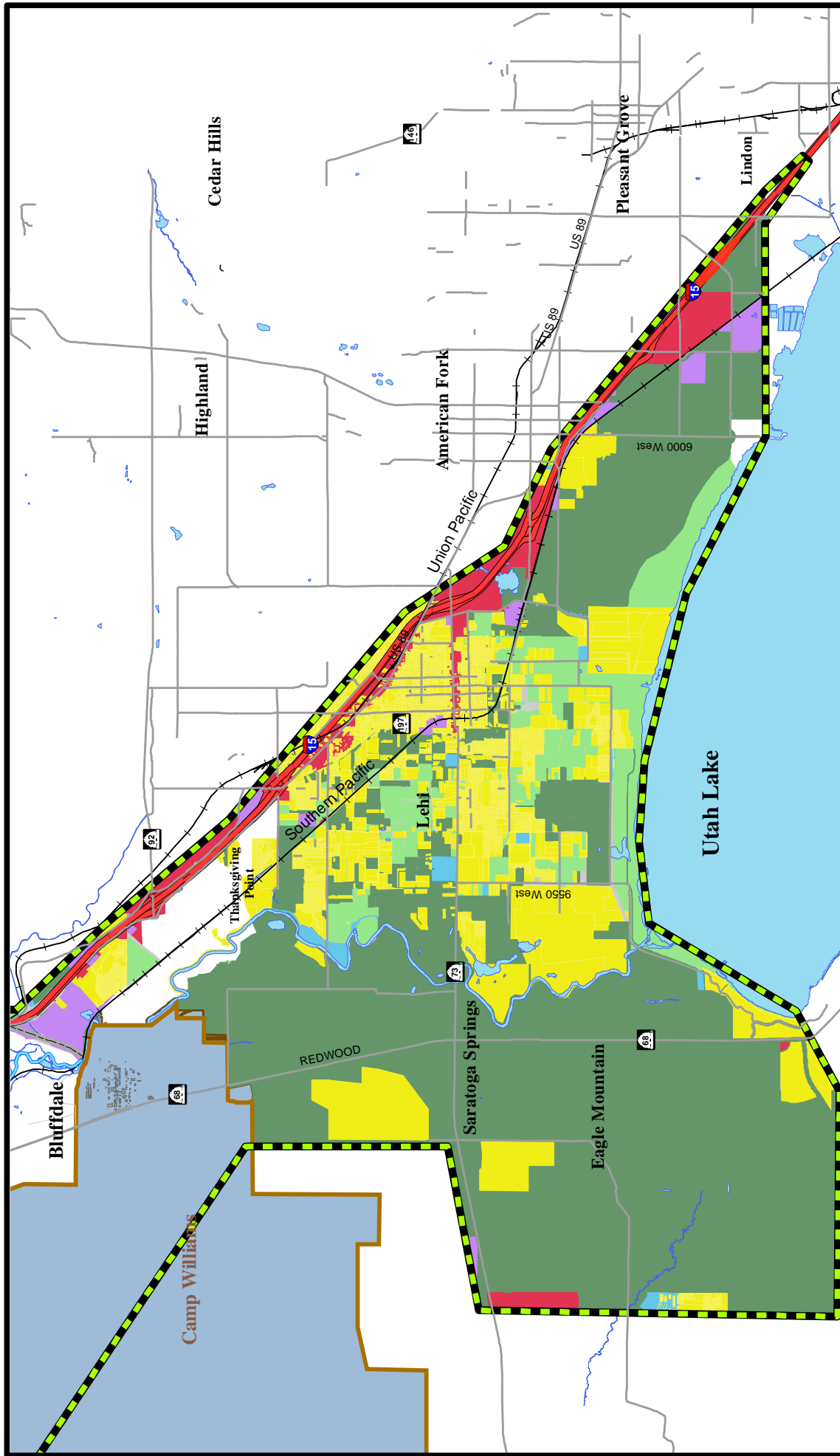
- Study Area Boundary
- Interstate/Freeway
- Collector/Arterial
- 7200/5800 West Freeway
- Arterials

- Land Use
- Agriculture
- Camp Williams
- Commercial
- Industrial
- Institutional
- No Data
- Open Space/Protection Area
- Residential



Land Use - 13400 South to 15500 South

Figure 4-9

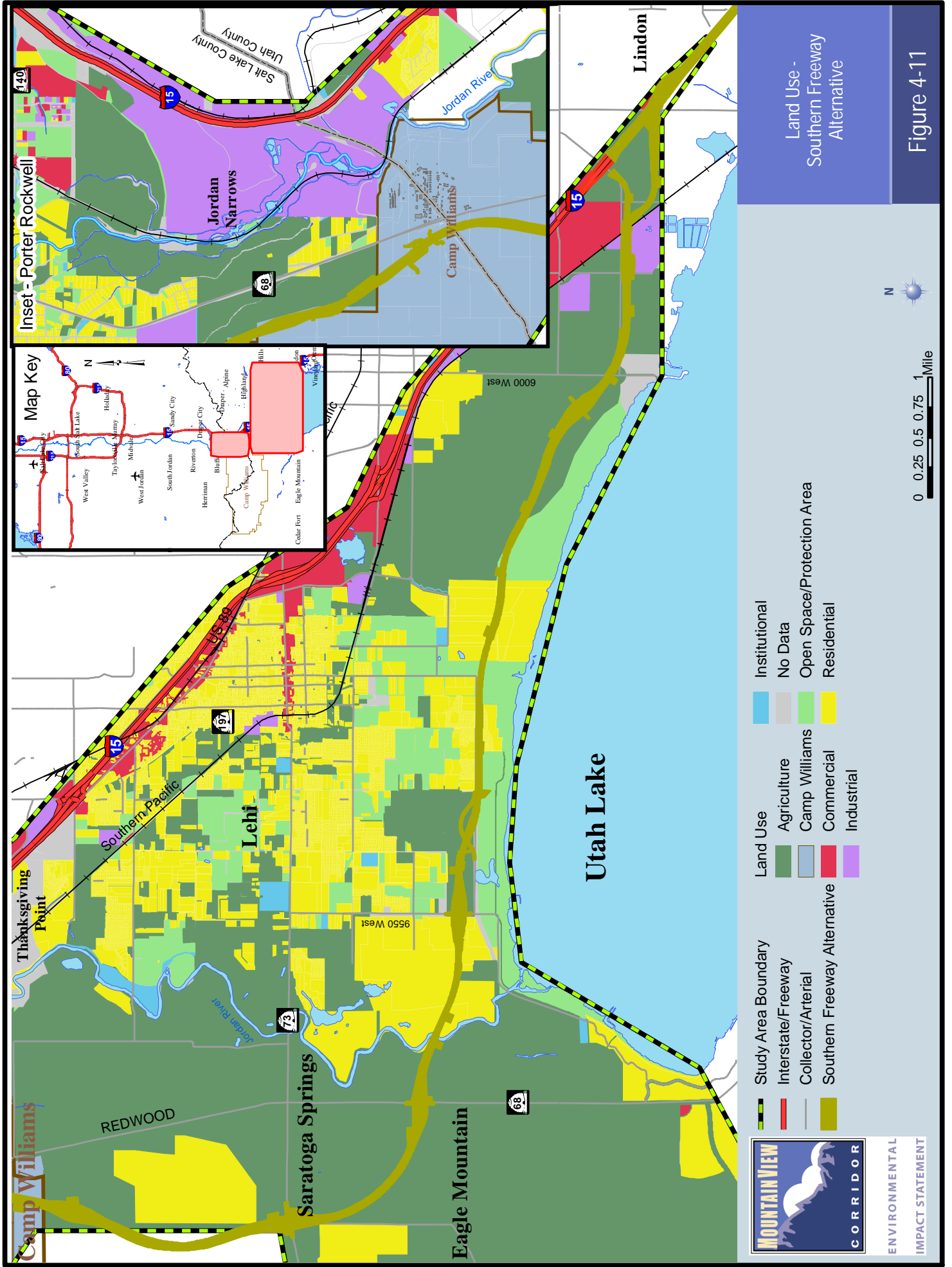


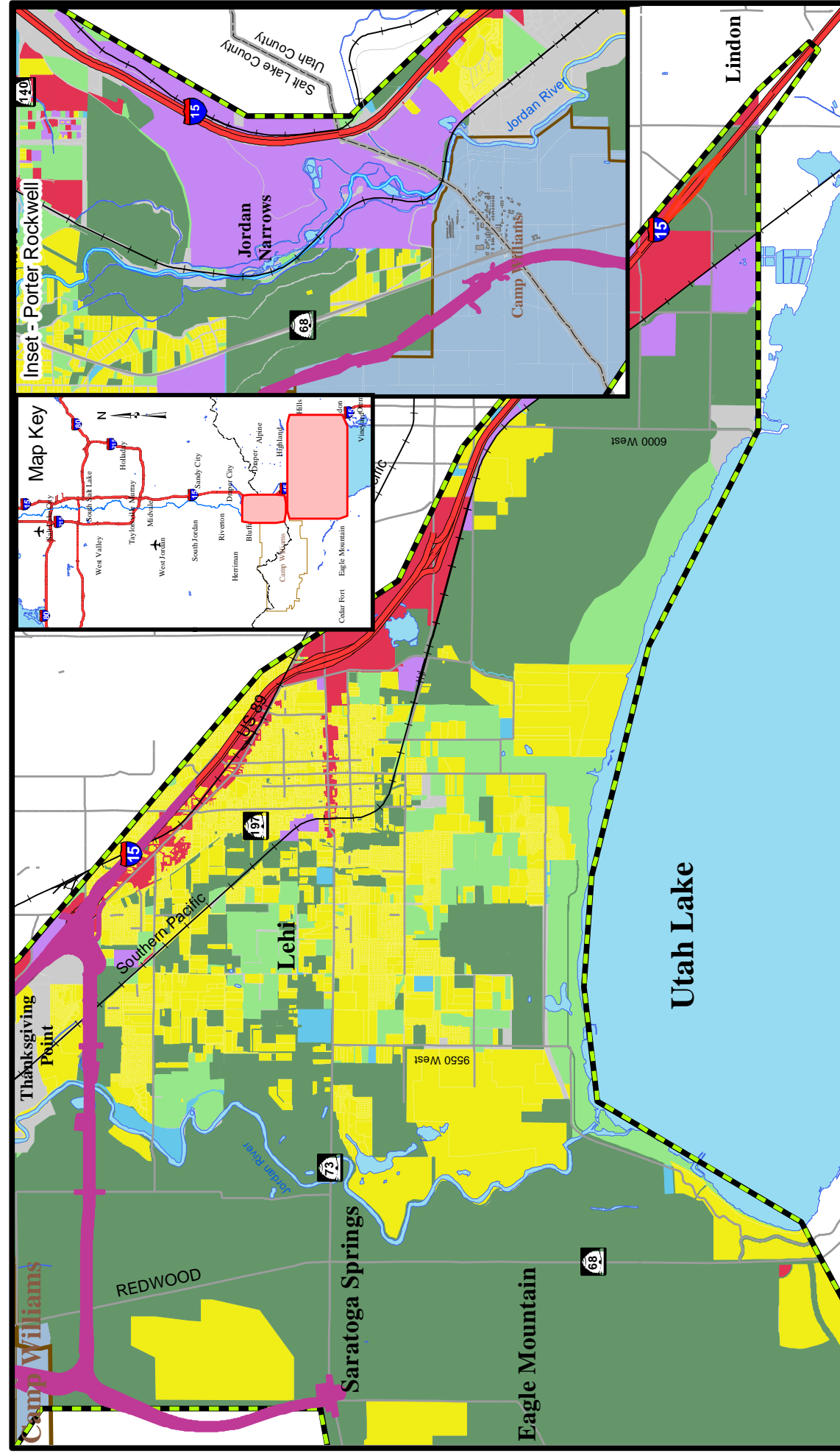
- Study Area Boundary
- Interstate/Freeway
- Collector/Arterial
- Agriculture
- Camp Williams
- Commercial
- Industrial
- Institutional
- No Data
- Open Space/Protection Area
- Residential



Land Use -  
Utah County

Figure 4-10





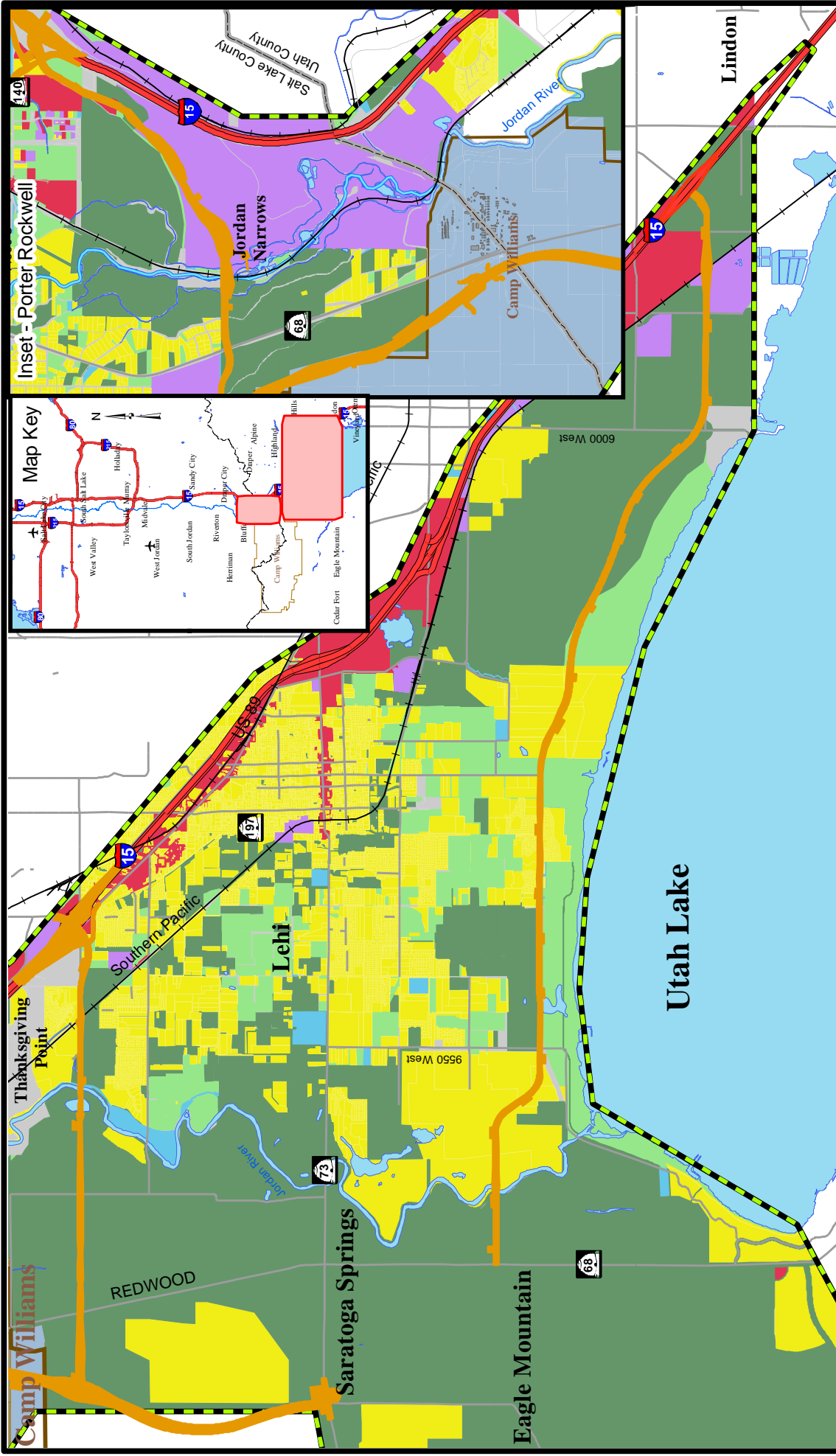
ENVIRONMENTAL  
IMPACT STATEMENT

- Study Area Boundary
- Interstate/Freeway
- Collector/Arterial
- 2100 North Freeway Alternative
- Land Use
- Agriculture
- Camp Williams
- Commercial
- Industrial
- Institutional
- No Data
- Open Space/Protection Area
- Residential

Land Use -  
2100 North Freeway  
Alternative



Figure 4-12



ENVIRONMENTAL  
IMPACT STATEMENT

- Study Area Boundary**
- Interstate/Freeway
  - Collector/Arterial
  - Arterials Alternative
- Land Use**
- Institutional
  - No Data
  - Open Space/Protection Area
  - Residential
  - Agriculture
  - Camp Williams
  - Commercial
  - Industrial

Land Use -  
Arterials Alternative



Figure 4-13