

**Final Environmental Impact Statement  
and  
Section 4(f) Evaluation**

**September 2008**

Submitted pursuant to 42 U.S.C. 4332(2)(c) and 49 U.S.C. 303

by

Federal Highway Administration  
Utah Department of Transportation  
Utah Transit Authority

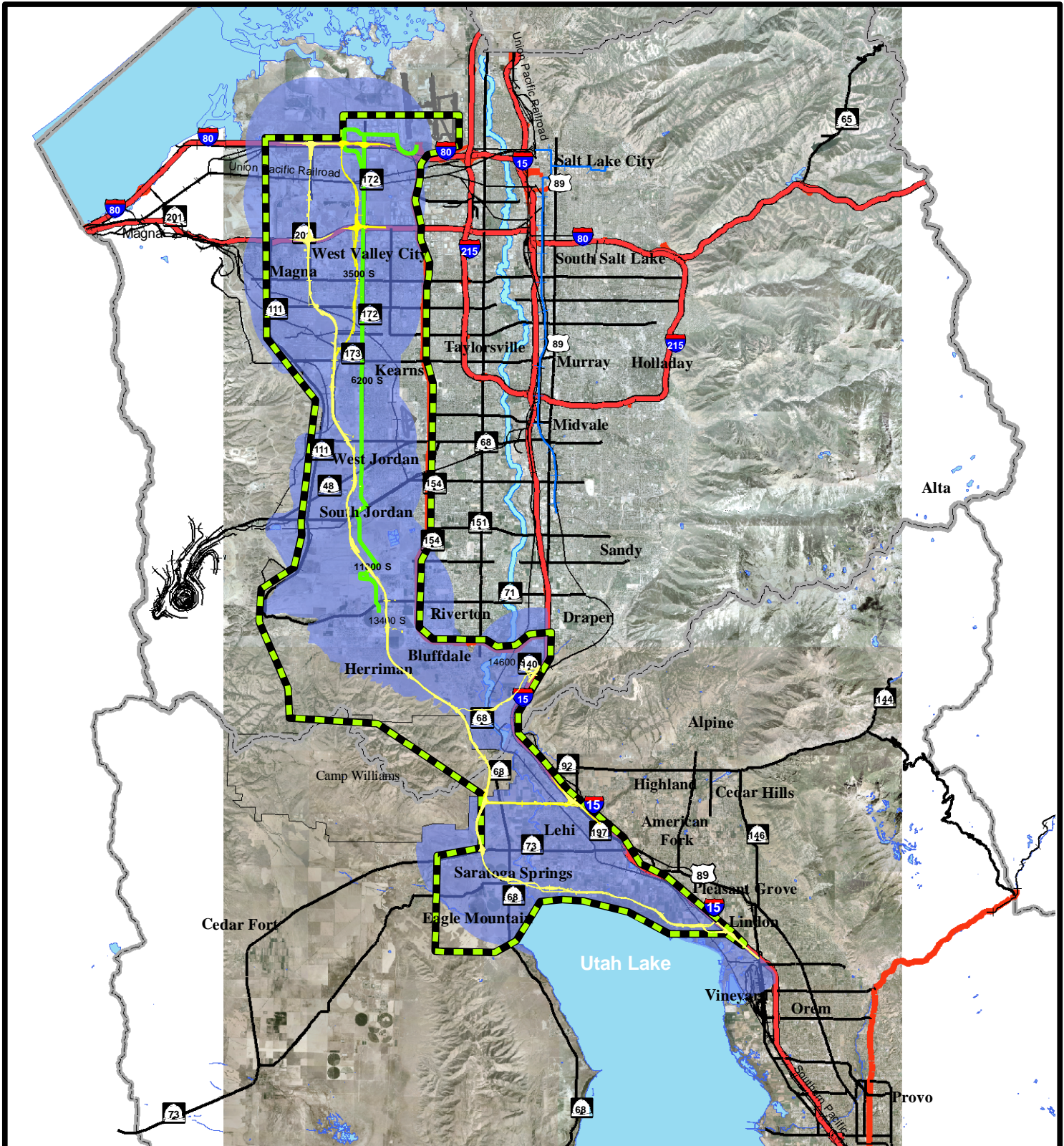
FHWA-UT-EIS-07-02-F

\*SP-0067(3)0

**Volume 7 of 8**

*Figures*





- Study Area
- Interstate/Freeway
- MVC Indirect Effects Analysis Area
- MVC Alternatives
- Transit Way

ENVIRONMENTAL  
IMPACT STATEMENT

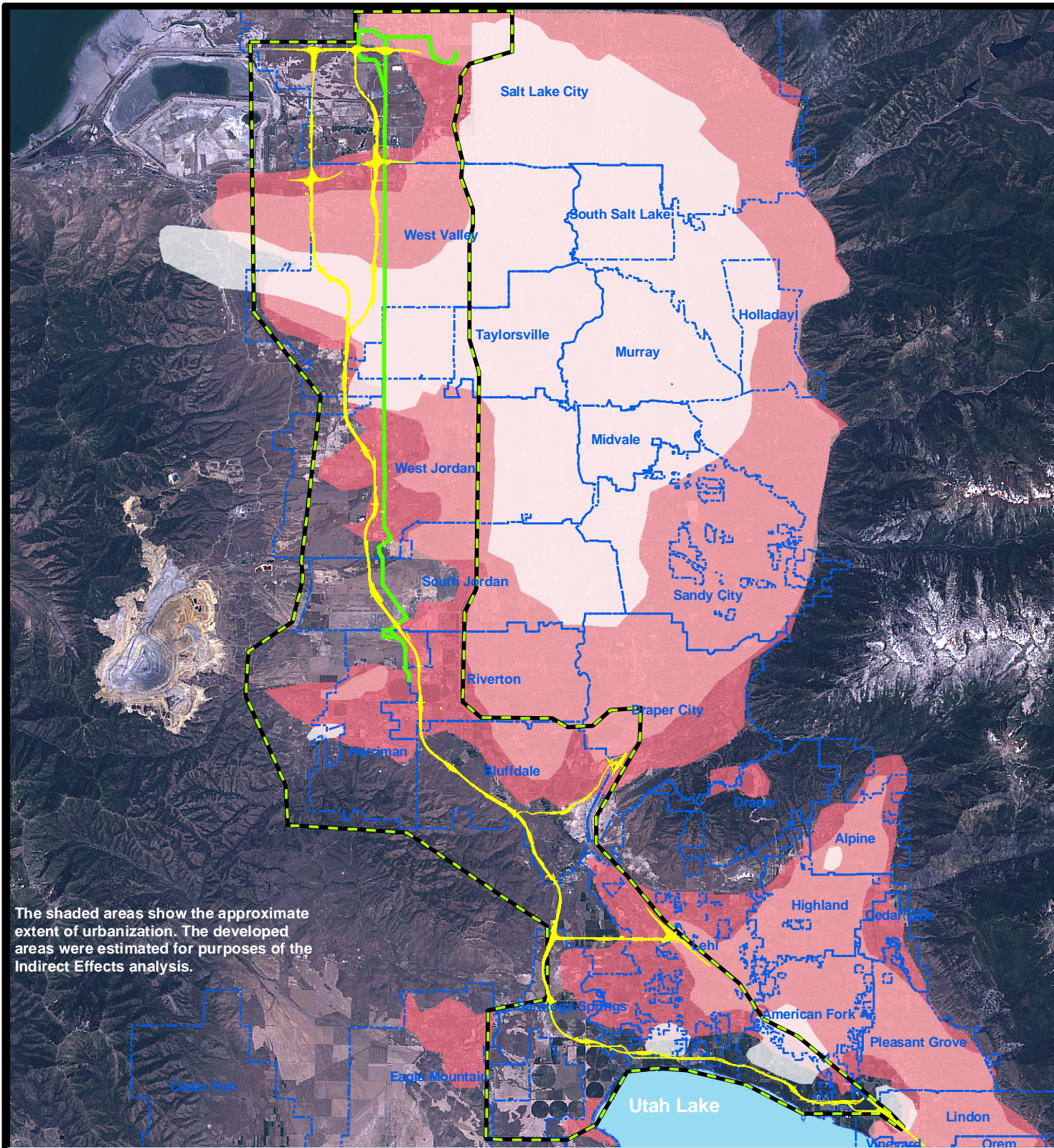
00.51 2 3 4 5  
Miles



Study Area and  
Indirect Effects  
Analysis Area

Figure 24-1



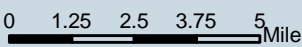


The shaded areas show the approximate extent of urbanization. The developed areas were estimated for purposes of the Indirect Effects analysis.



ENVIRONMENTAL  
IMPACT STATEMENT

- MVC Study Area
- MVC Alternatives
- Transit Way
- City Boundary
- Urban Development - 1972
- Urban Development - 1990
- Urban Development - 2004



Source: 2004 NASA Satellite Imagery was provided courtesy of University of Utah Energy and Geoscience Institute

Urban Development  
1972 - 2004

Figure 24-2



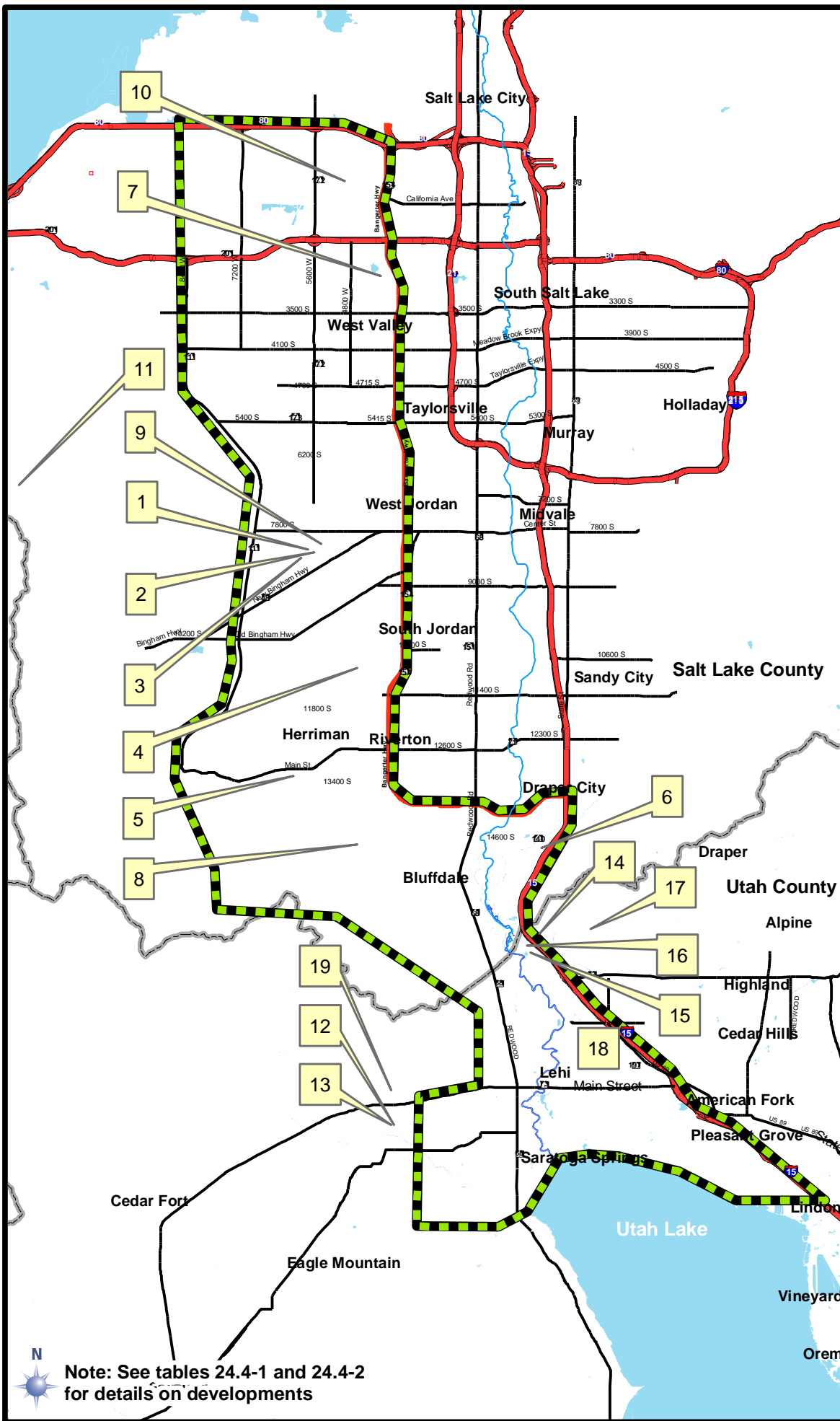


**ENVIRONMENTAL  
IMPACT STATEMENT**

- 1 Bloomfield Estates, West Jordan
  - 2 Bloomfield Farms, West Jordan
  - 3 Bloomfield Heights, West Jordan
  - 4 Daybreak, South Jordan
  - 5 Herriman "Downtown", Herriman
  - 6 Independence at Bluffdale
  - 7 Riverbend, Salt Lake City
  - 8 Rosecrest, Herriman & Bluffdale
  - 9 Stone Creek, West Jordan
  - 10 Suburban Land Reserve, Salt Lake City
  - 11 West Bench, Salt Lake County
  - 12 Eagle Mountain
  - 13 Eagle Mountain
  - 14 Frank Gehry Project, Point of the Mountain, Lehi
  - 15 Thanksgiving Meadows, Lehi
  - 16 Thanksgiving Point, Lehi
  - 17 Traverse Mountain, Lehi
  - 18 Various, Lehi
  - 19 Various, Eagle Mountain
-  MVC Study Area Boundary

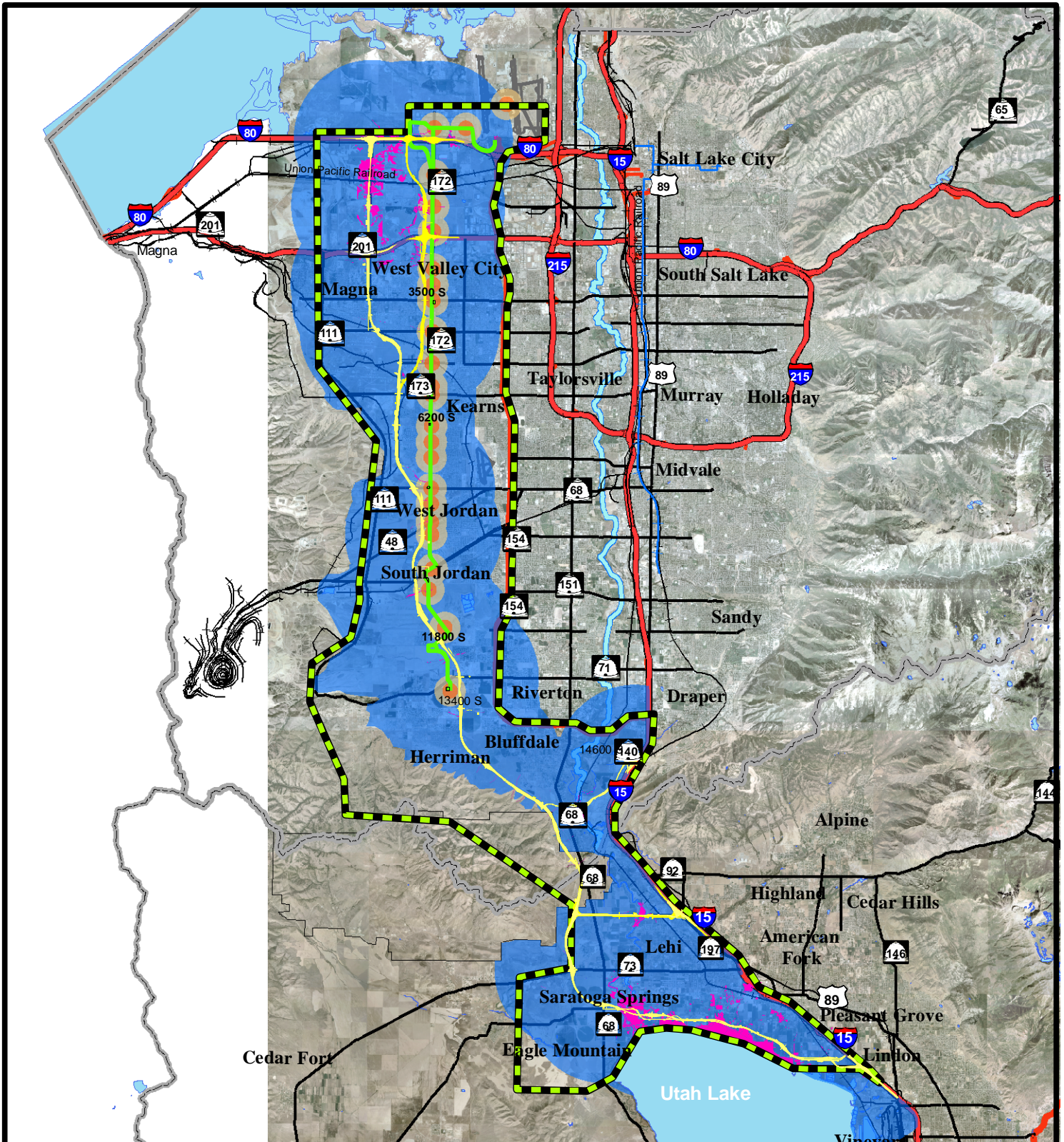
Locations of Major Developments and Permitted Housing Units

Figure 24-3



Note: See tables 24.4-1 and 24.4-2 for details on developments





ENVIRONMENTAL  
IMPACT STATEMENT

- Study Area
- Transit Stations 1/4 Mile Radius
- Interstate/Freeway
- Transit Stations 1/2 Mile Radius
- MVC Alternatives
- Interchanges 5 Mile Radius
- Transit Way
- Wetlands
- Park-N-Ride Lot

00.51 2 3 4  
Miles



Note: The MVC project will affect the pace and location of development; it will not induce additional growth.

Potential Project-Influenced Development Areas and Wetlands

Figure 24-4