

**Final Environmental Impact Statement
and
Section 4(f) Evaluation**

September 2008

Submitted pursuant to 42 U.S.C. 4332(2)(c) and 49 U.S.C. 303

by

Federal Highway Administration
Utah Department of Transportation
Utah Transit Authority

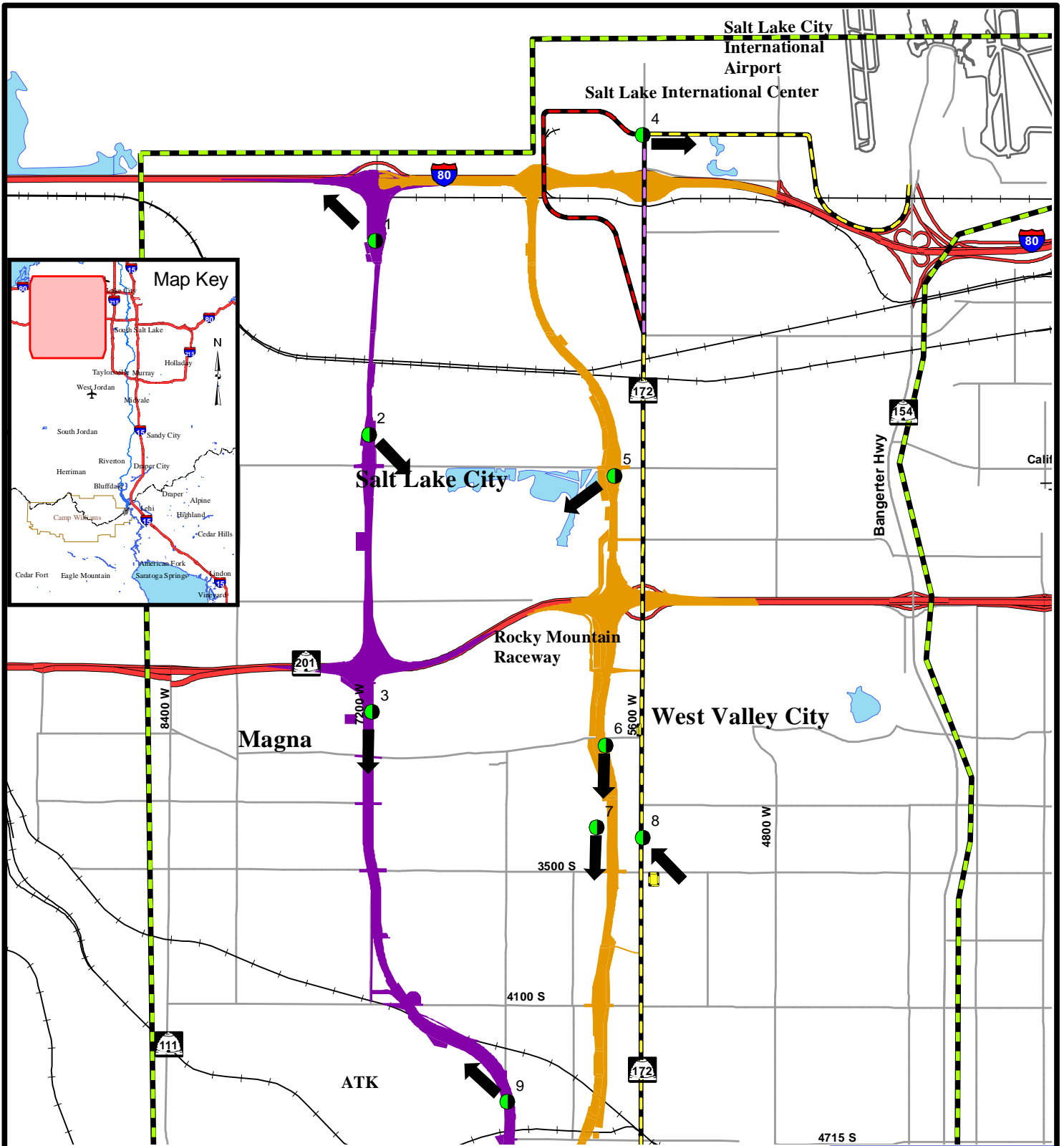
FHWA-UT-EIS-07-02-F

*SP-0067(3)0

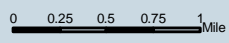
Volume 7 of 8

Figures



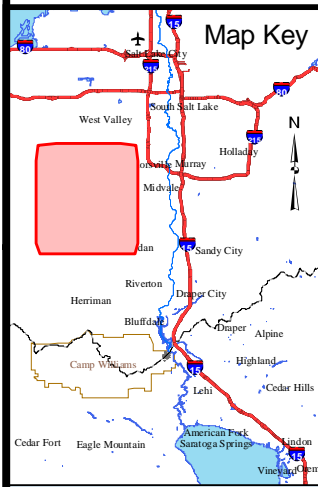
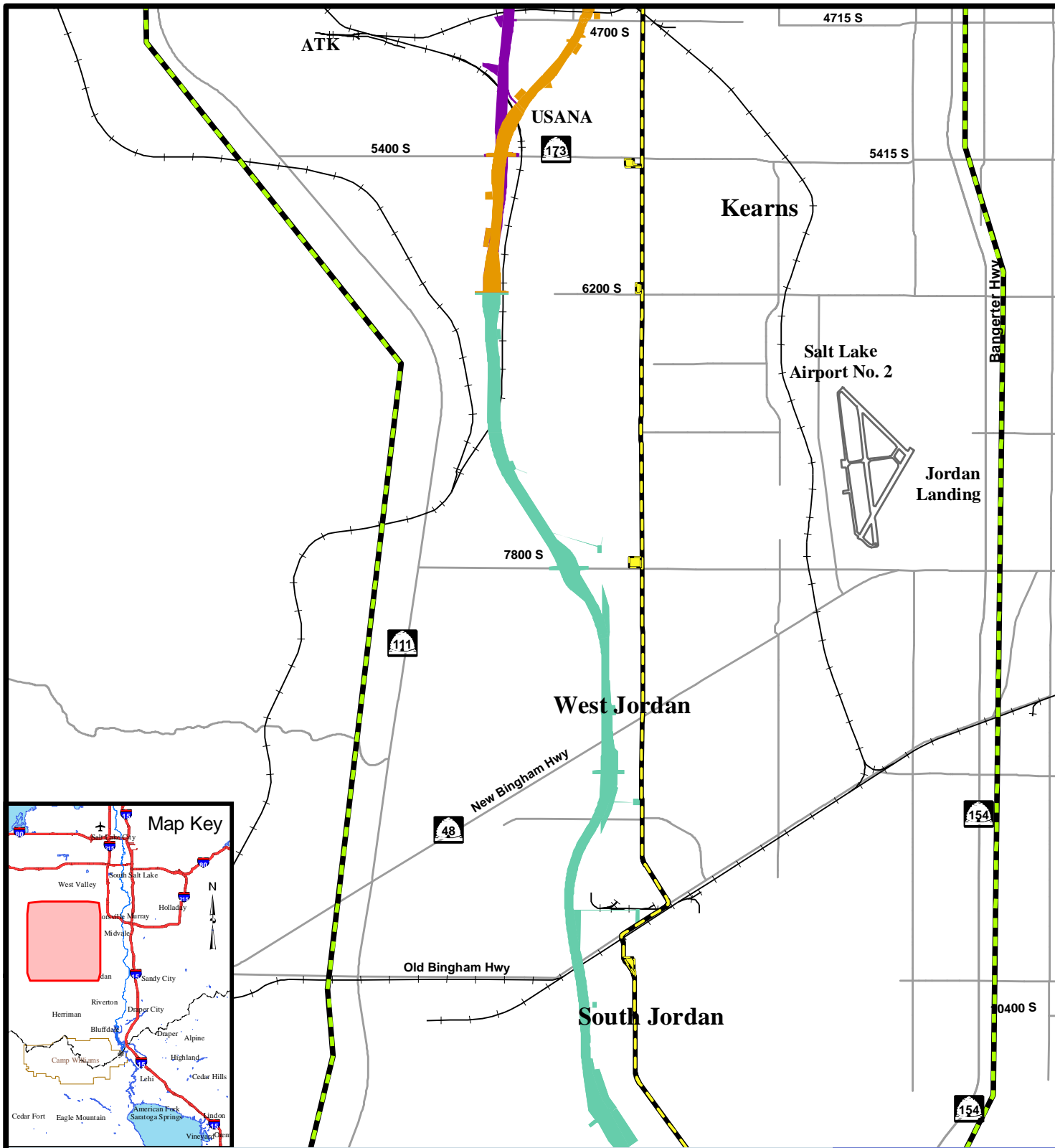


- █ Study Area
- █ Interstate/Freeway
- █ Collector/Arterial
- █ 5800 West Freeway
- █ 7200 West Freeway
- █ Transit
- █ Center & Mixed Use
- █ Center Running
- █ Mixed Use
- Park-N-Ride Lot
- Visual Reference Points
- ➔ Observation Direction



Visual Resources
Key Observation Points -
I-80 to 4700 South

Figure 19-1



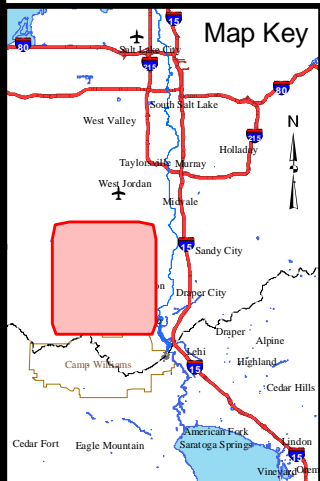
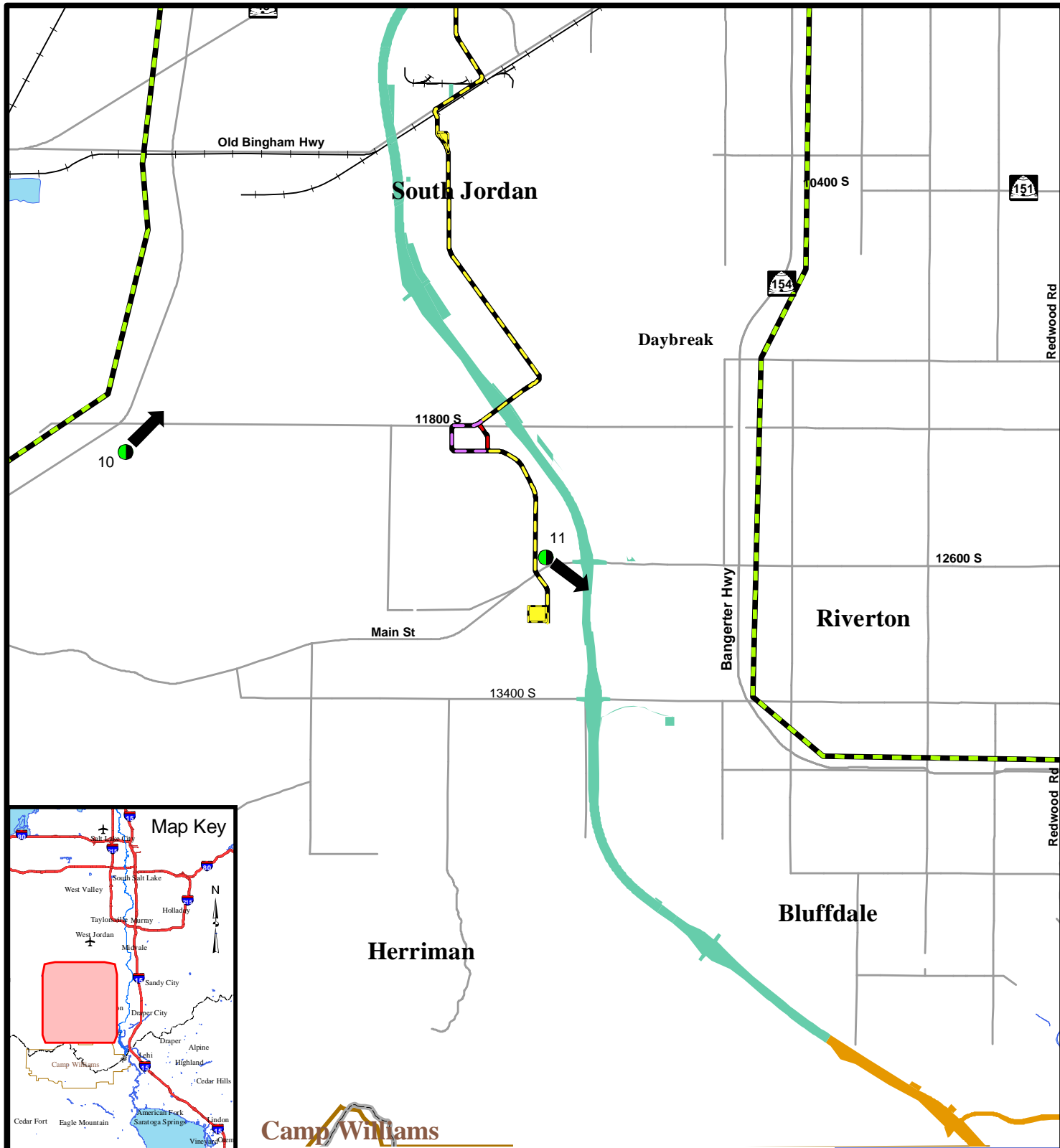
<p>MOUNTAIN VIEW CORRIDOR</p> <p>ENVIRONMENTAL IMPACT STATEMENT</p>	Study Area	Collector/Arterial	Transit Center & Mixed Use
	5800 West Freeway	Center Running	Mixed Use
	7200 West Freeway	Park-N-Ride Lot	
	7200/5800 West Freeway		

0 0.25 0.5 0.75 1 Mile


Note: No observatin points

Visual Resources
Key Observation Points -
4700 South to
10400 South

Figure 19-2

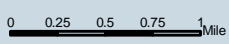



Camp Williams



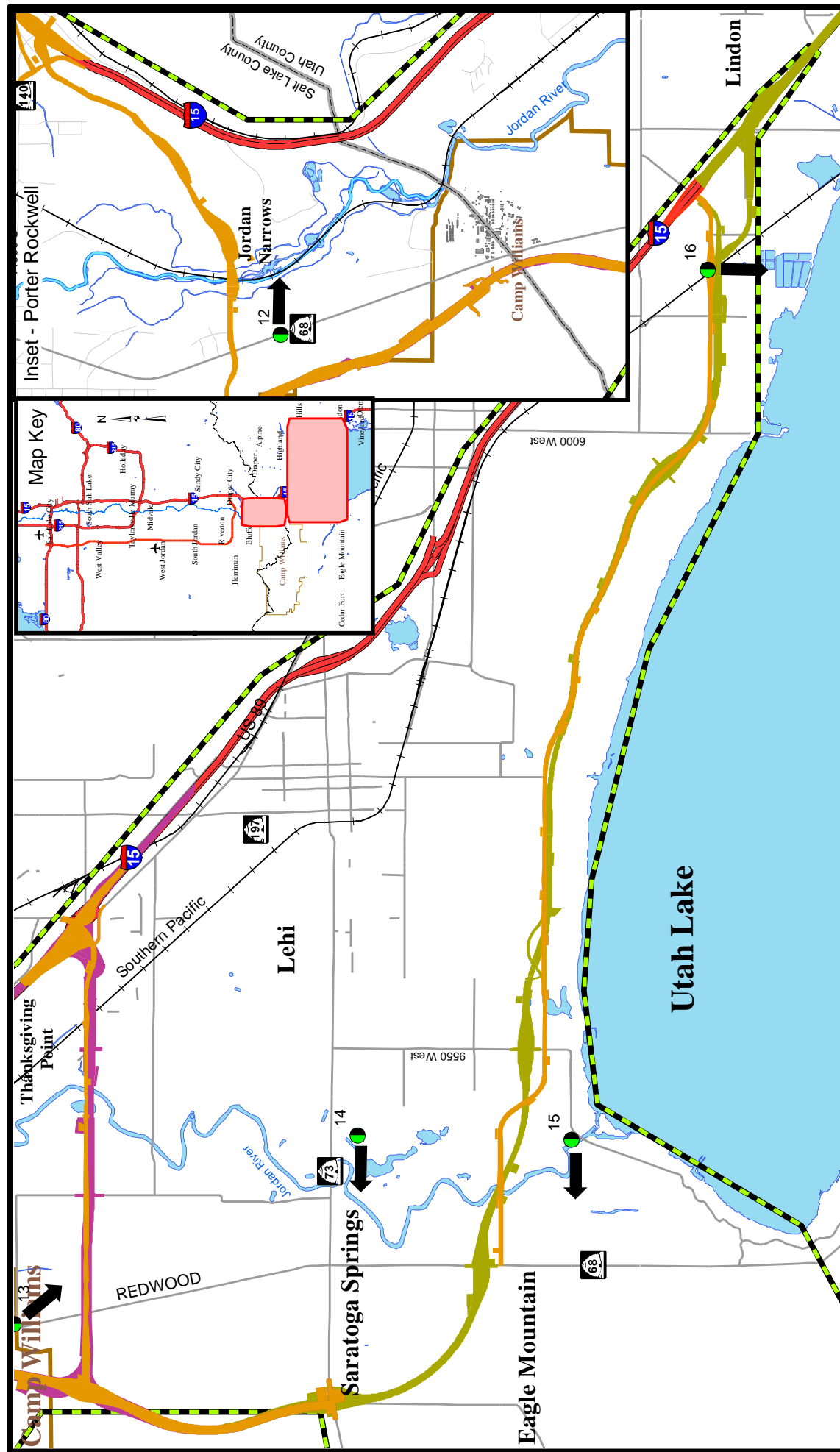
ENVIRONMENTAL IMPACT STATEMENT

- Study Area
- Collector/Arterial
- 7200/5800 West Freeway
- Transit**
- Center & Mixed Use
- Center Running
- Mixed Use
- Park-N-Ride Lot
- Key Observation Points
- Observation Direction

Visual Resources
Key Observation Points -
10400 South to
Utah County Line

Figure 19-3



- MVC Study Area Boundary
- Interstate/Freeway
- Collector/Arterial
- Arterials Alternative
- 2100 North Freeway Alternative
- Southern Freeway Alternative
- Key Observation Points
- Observation Direction

0 0.25 0.5 0.75 1 Mile

Visual Resources
Key Observation Points -
Utah County

Figure 19-4