

**Final Environmental Impact Statement
and
Section 4(f) Evaluation**

September 2008

Submitted pursuant to 42 U.S.C. 4332(2)(c) and 49 U.S.C. 303

by

Federal Highway Administration
Utah Department of Transportation
Utah Transit Authority

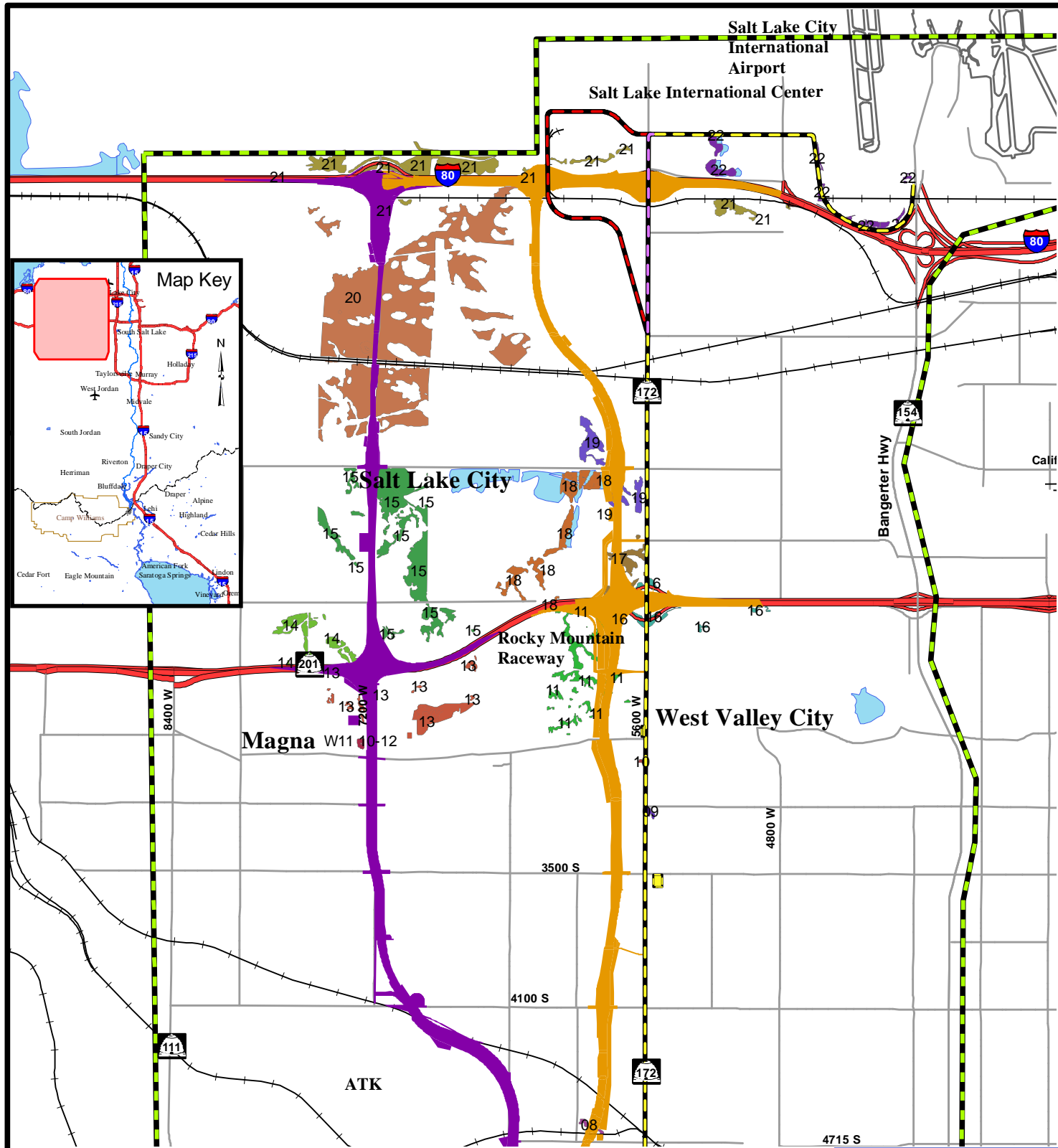
FHWA-UT-EIS-07-02-F

*SP-0067(3)0

Volume 7 of 8

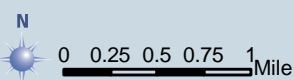
Figures





ENVIRONMENTAL
IMPACT STATEMENT

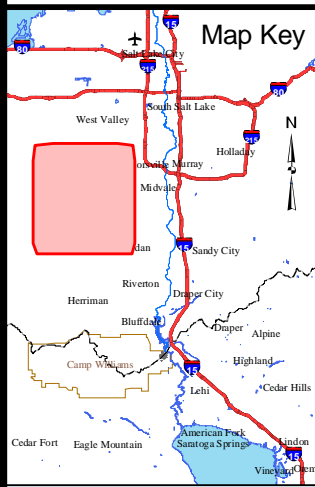
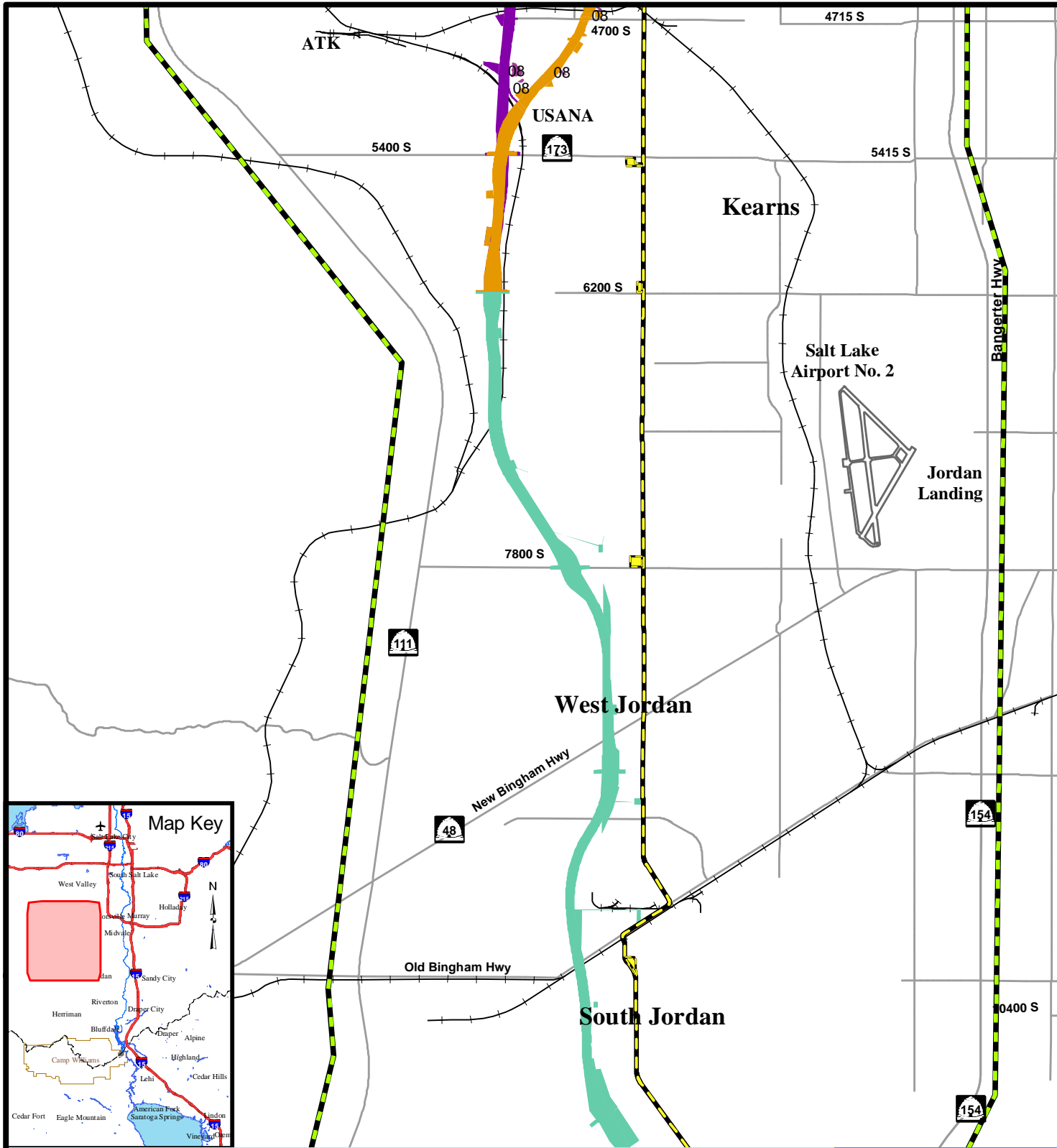
- Study Area Boundary Transit
- Interstate/Freeway
- Collector/Arterial
- 5800 West Freeway
- 7200 West Freeway
- Center & Mixed Use
- Center Running
- Mixed Use
- Park-N-Ride Lot



- Field Assessment wetland inventory
- | | |
|----|----|
| 08 | 16 |
| 09 | 17 |
| 10 | 18 |
| 11 | 19 |
| 12 | 20 |
| 13 | 21 |
| 14 | 22 |
| 15 | 23 |

Wetland Functional Units
Salt Lake County -
I-80 to 4700 South

Figure 15-1



MOUNTAIN VIEW
CORRIDOR
ENVIRONMENTAL
IMPACT STATEMENT

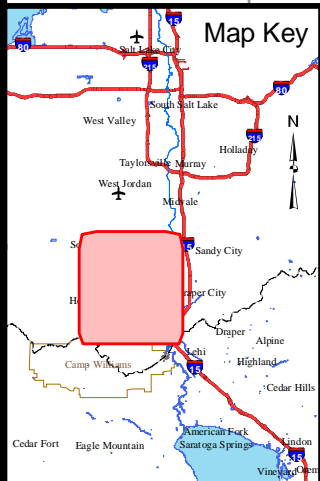
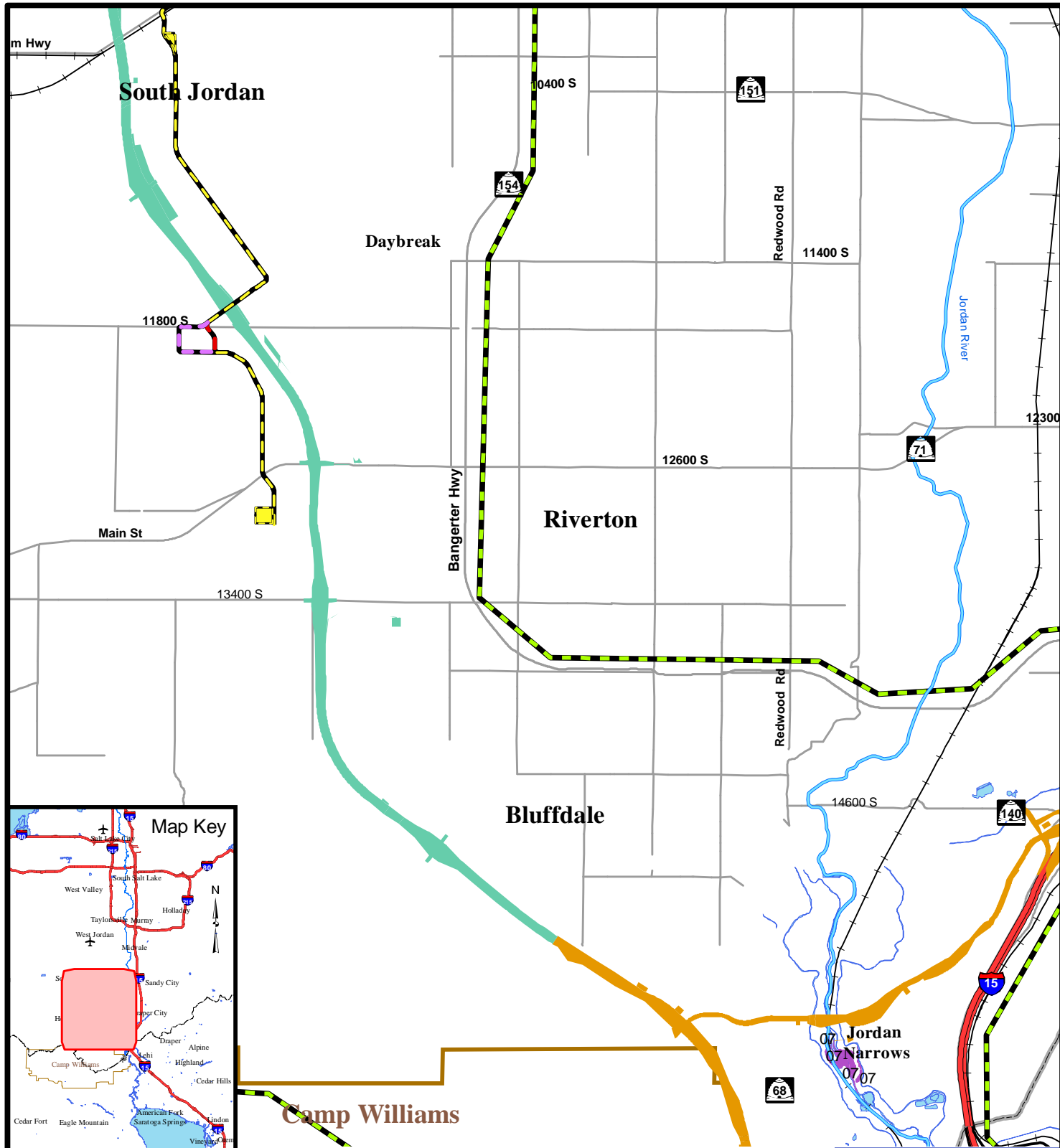
Study Area Boundary	Transit
Collector/Arterial	Center & Mixed Use
5800 West Freeway	Park-N-Ride Lot
7200 West Freeway	Field Assessment wetland inventory
7200/5800 West Freeway	08

N

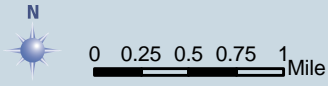
0 0.25 0.5 0.75 1 Mile

Wetland Functional Units
Salt Lake County -
4700 South to
10400 South

Figure 15-2

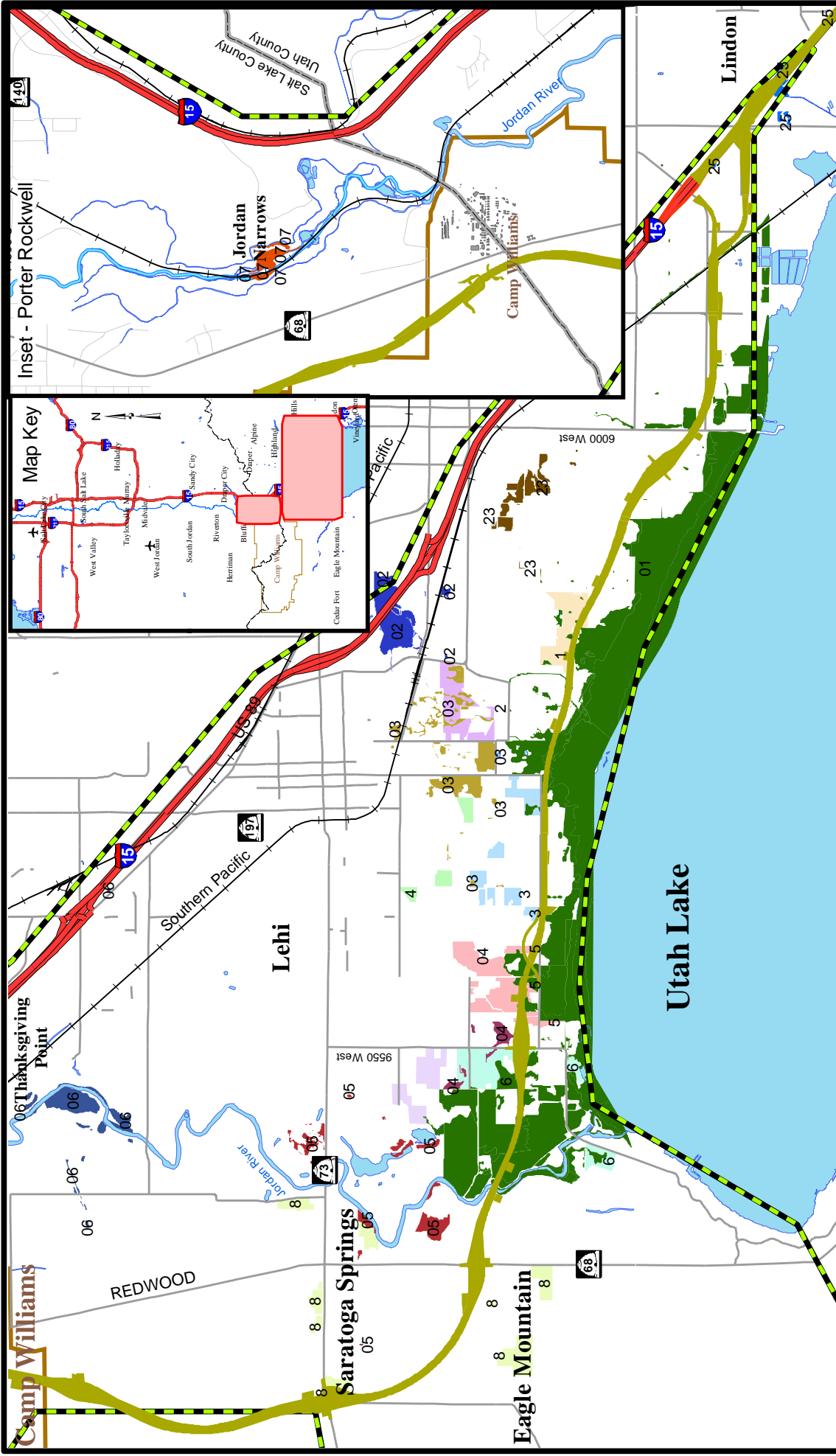


- Study Area Boundary
- Interstate/Freeway
- Collector/Arterial
- 7200/5800 West Freeway
- Transit
- Center & Mixed Use
- Center Running
- Mixed Use
- Park-N-Ride Lot
- Field Assessment wetland inventory
- 07



Wetland Functional Units
Salt Lake County -
10400 South to
Utah County Line

Figure 15-3

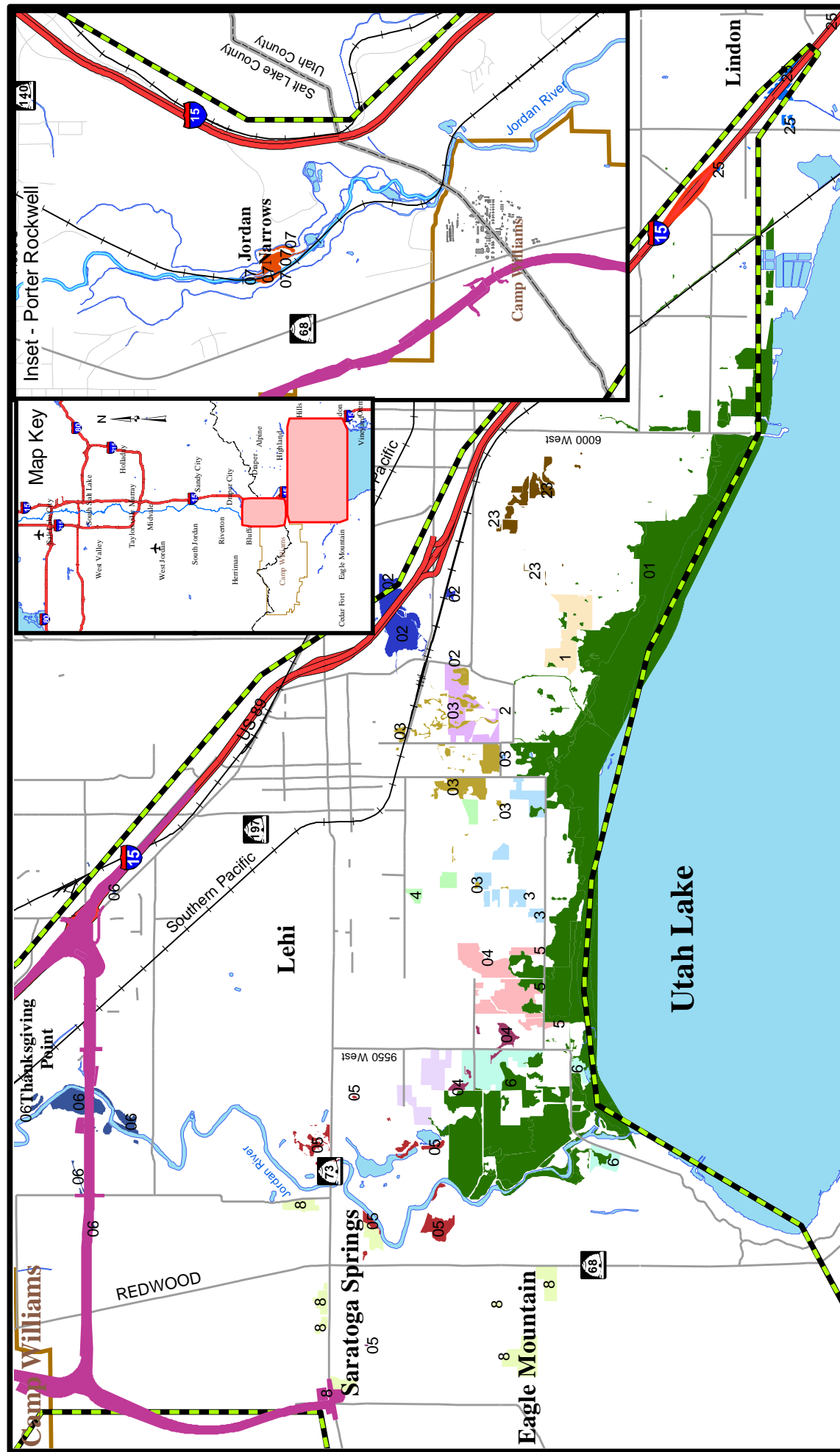


Wetland Functional Units
Utah County -
Southern Freeway
Alternative

Figure 15-4

MOUNTAIN VIEW
CORRIDOR

ENVIRONMENTAL
IMPACT STATEMENT



Study Area Boundary

- Interstate/Freeway
- Collector/Arterial
- 2100 North Freeway Alternative

Field Assessment Wetland Inventory

Functional Unit	01	02	03	04	05	06	07
Lottium A.	1	2	3	4	5	6	7
	8	23	25				

Map Key

Utah County

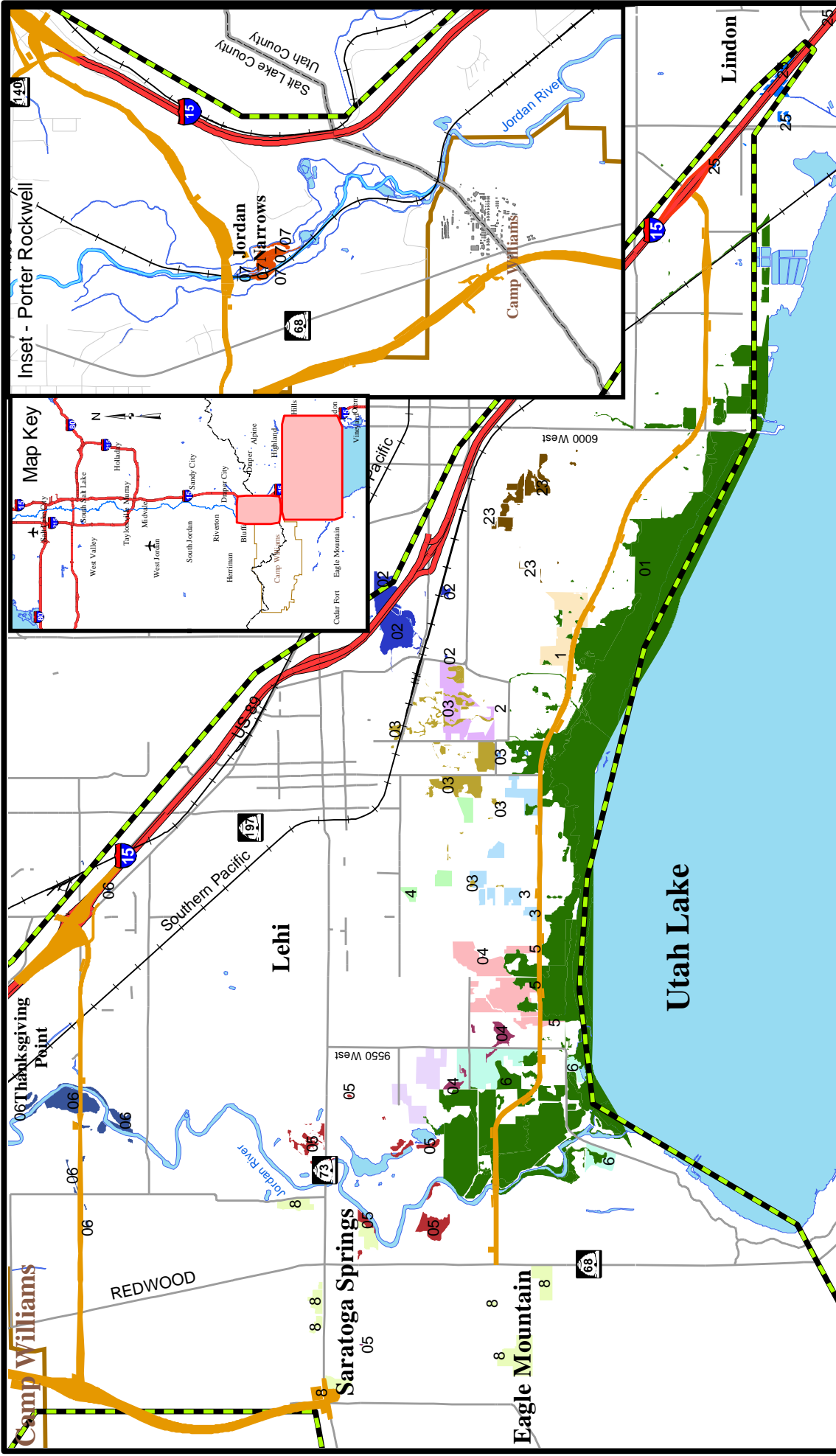
2100 North Freeway Alternative

Scale

0 0.25 0.5 0.75 1 Mile

North Arrow

Figure 15-5



Wetland Functional Units
Utah County -
Arterials
Alternative

Figure 15-6

MOUNTAIN VIEW
CORRIDOR

ENVIRONMENTAL
IMPACT STATEMENT

0 0.25 0.5 0.75 1 Mile

N

Playa Habitat



Uplands Habitat



Ephemeral Drainages Habitat



Wetlands Habitat



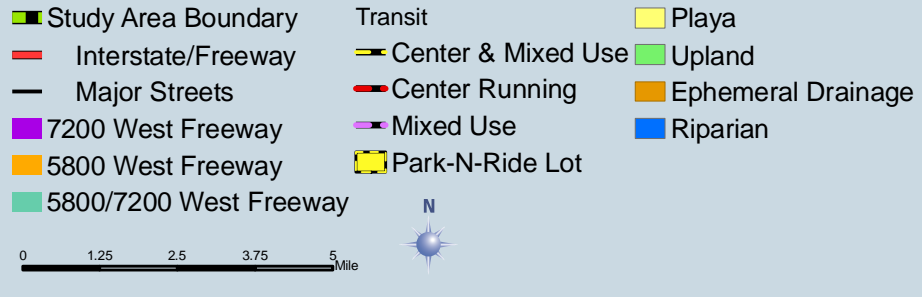
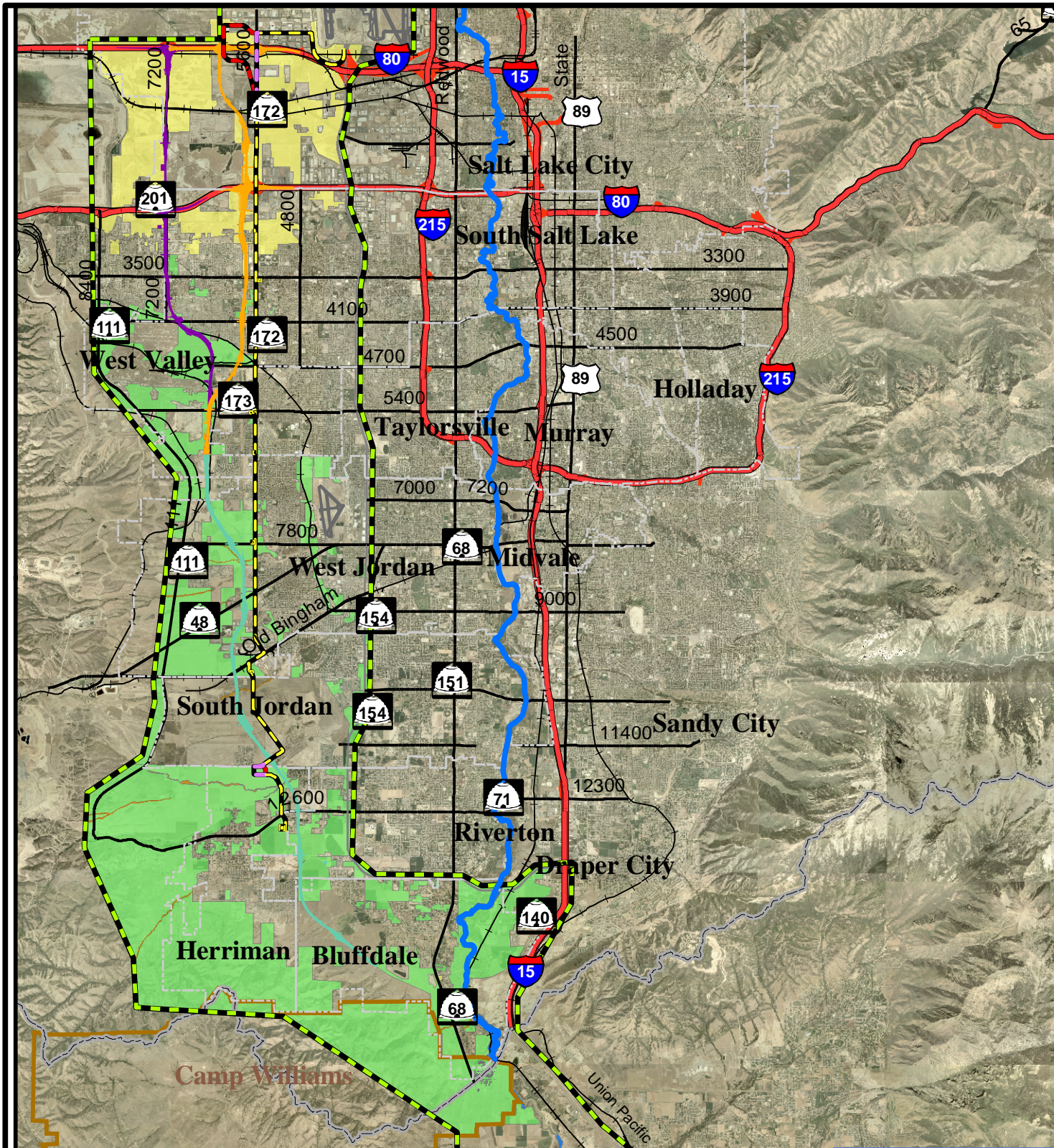
Riparian Habitat



ENVIRONMENTAL
IMPACT STATEMENT

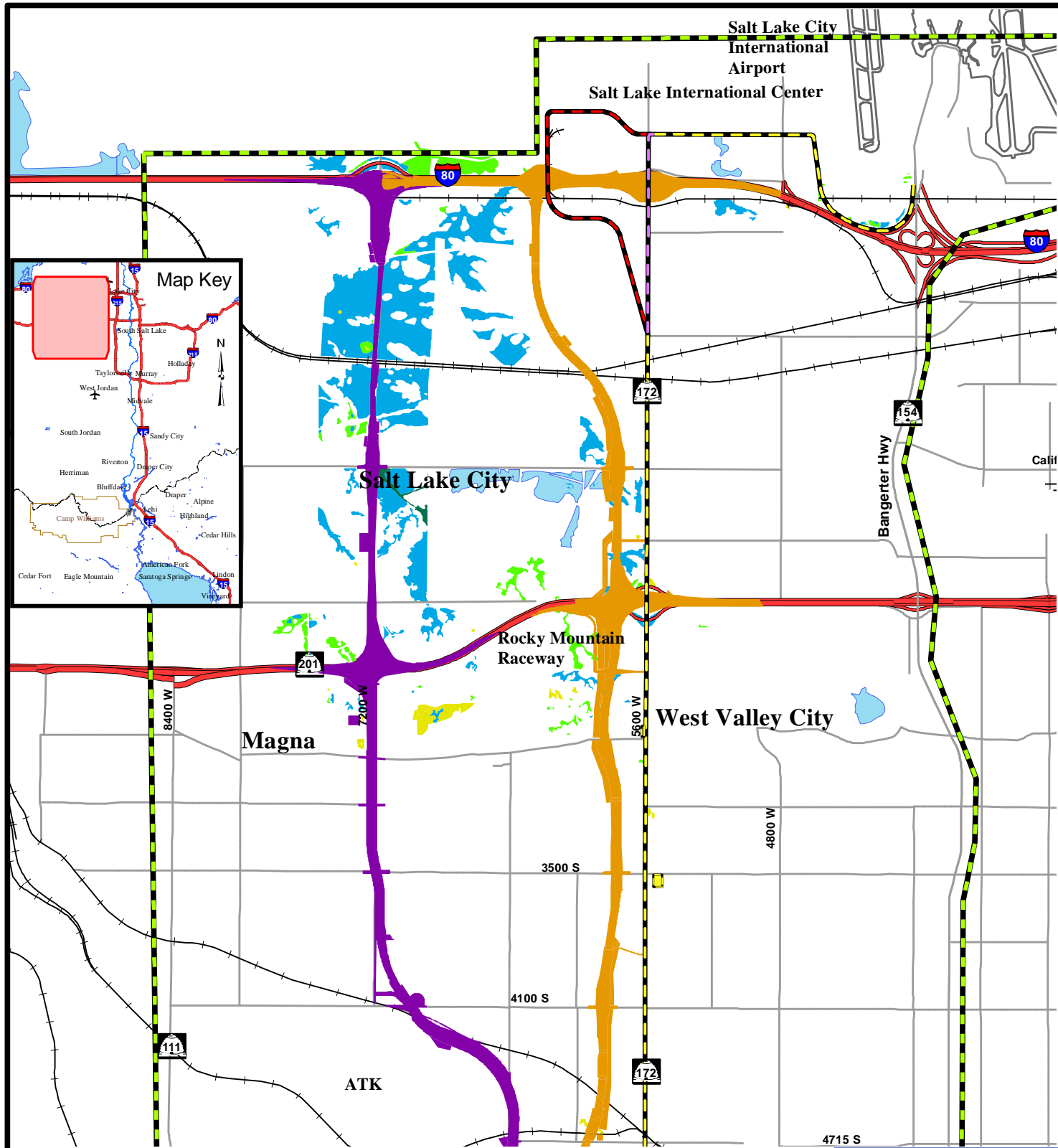
Wildlife Habitat
Types

Figure 15-7



Wildlife Habitat - Salt Lake County

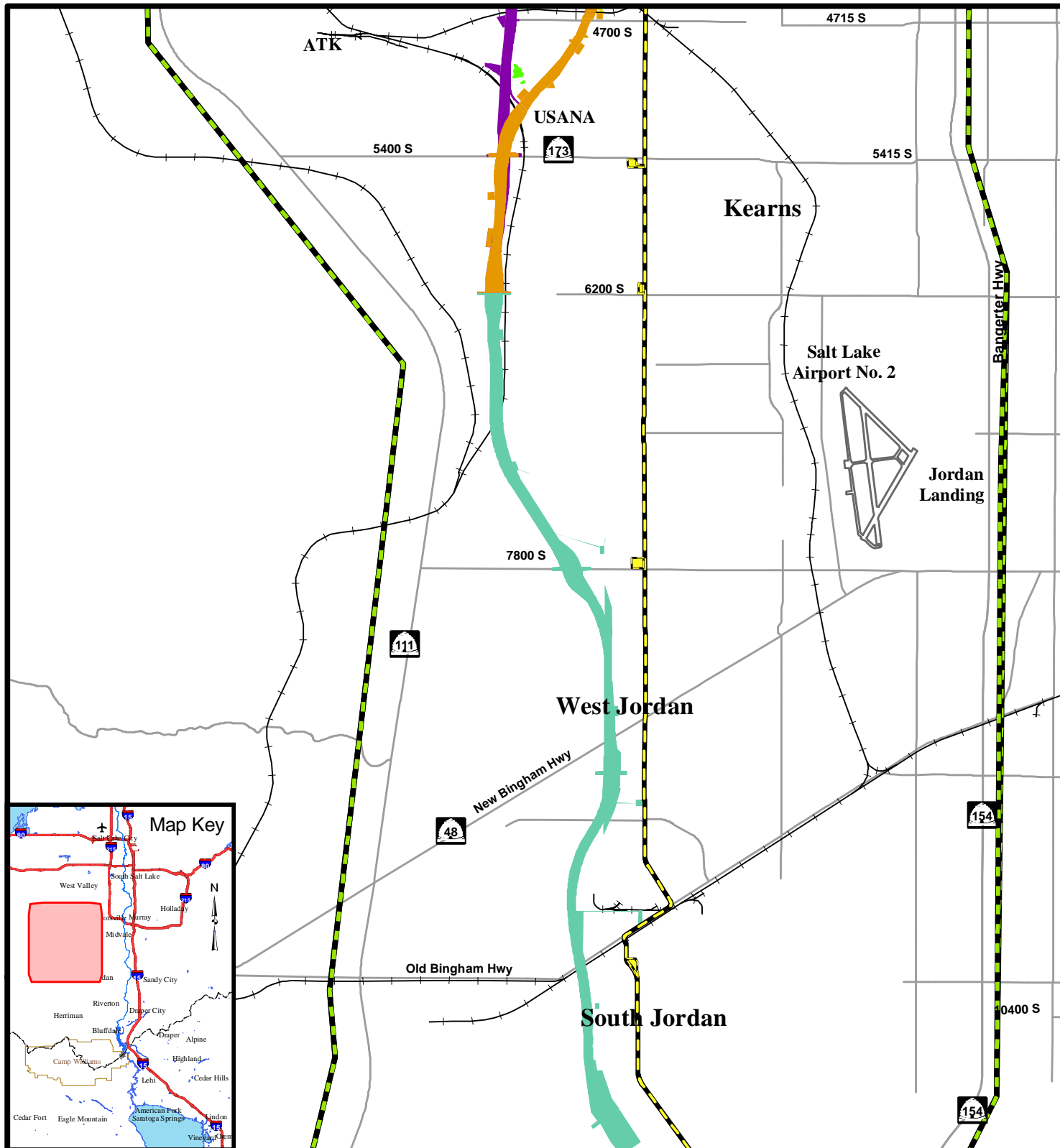
Figure 15-8



- | | | |
|--|--|---|
| <ul style="list-style-type: none"> Study Area Boundary Transit Interstate/Freeway Collector/Arterial 5800 West Freeway 7200 West Freeway | <ul style="list-style-type: none"> Center & Mixed Use Center Running Mixed Use Park-N-Ride Lot | <p>Field Assessment Wetland Inventory</p> <ul style="list-style-type: none"> Emergent Marsh Types Lolium Arundinaceum Playas Riparian Scrub-Shrub Types Wet Meadow Types Wetland |
|--|--|---|

Wetland Locations - I-80 to 4700 South

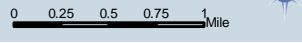
Figure 15-9

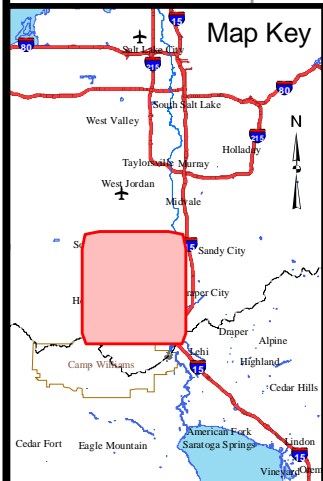
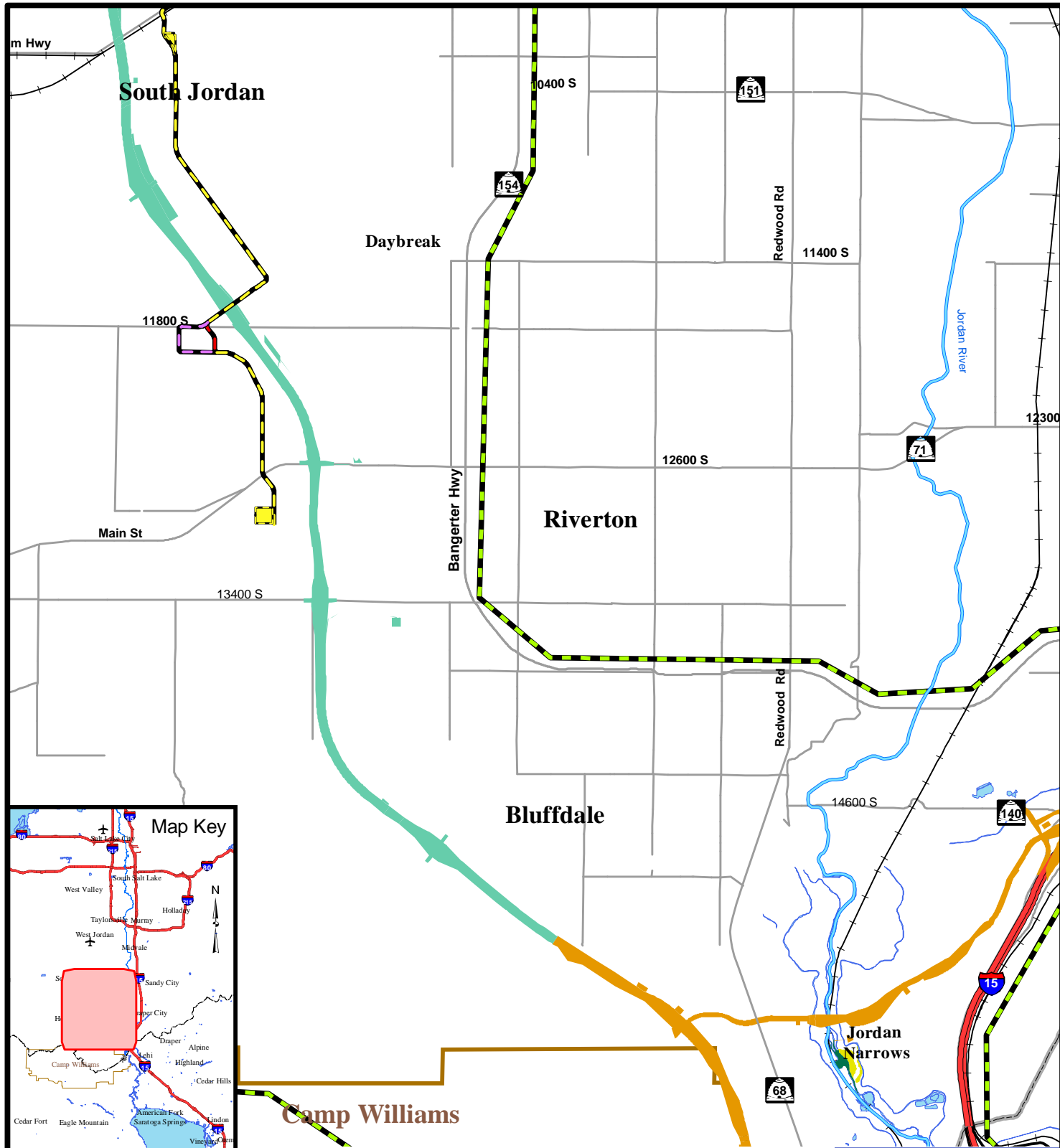


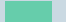

- | | |
|---|---|
| <ul style="list-style-type: none"> Study Area Boundary Collector/Arterial 5800 West Freeway 7200 West Freeway 7200/5800 West Freeway Transit Center & Mixed Use Park-N-Ride Lot | <p>Field Assessment Wetland Inventory</p> <ul style="list-style-type: none"> Emergent Marsh Types Lolium Arundinaceum Playas Riparian Scrub-Shrub Types Wet Meadow Types Wetland |
|---|---|

Wetland Locations -
4700 South to
10400 South

Figure 15-10



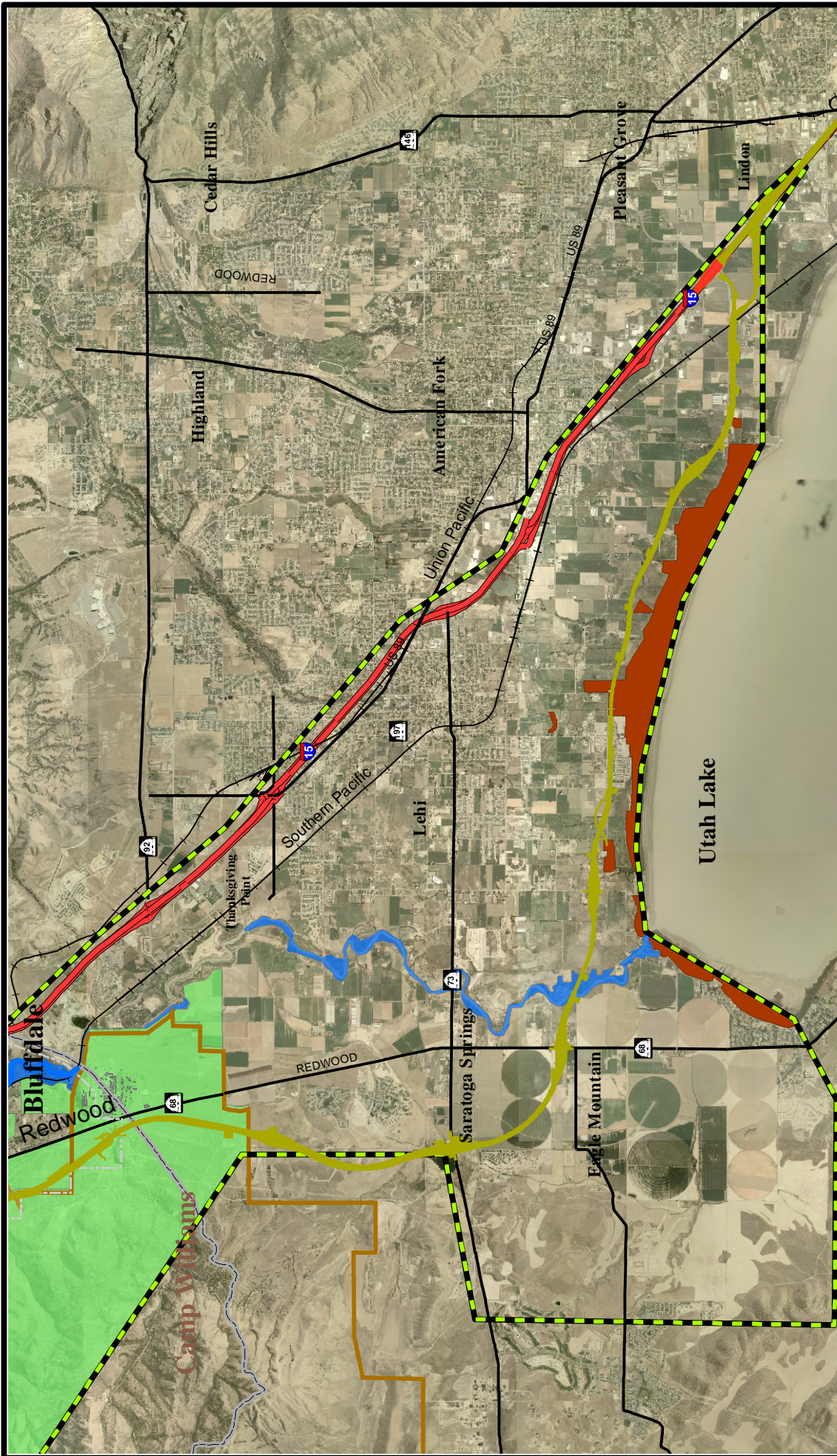


 <p>MOUNTAIN VIEW CORRIDOR</p> <p>ENVIRONMENTAL IMPACT STATEMENT</p>	 Study Area Boundary	 Field Assessment Wetland Inventory
	 7200/5800 West Freeway	 Emergent Marsh Types
	 Collector/Arterial	 Lolium Arundinaceum
	 Transit	 Playas
	 Center & Mixed Use	 Riparian
	 Center Running	 Scrub-Shrub Types
 Mixed Use	 Wet Meadow Types	
 Park-N-Ride Lot	 Wetland	

Wetland Locations -
10400 South to
Utah County Line

0 0.25 0.5 0.75 1 Mile

Figure 15-11



ENVIRONMENTAL
IMPACT STATEMENT

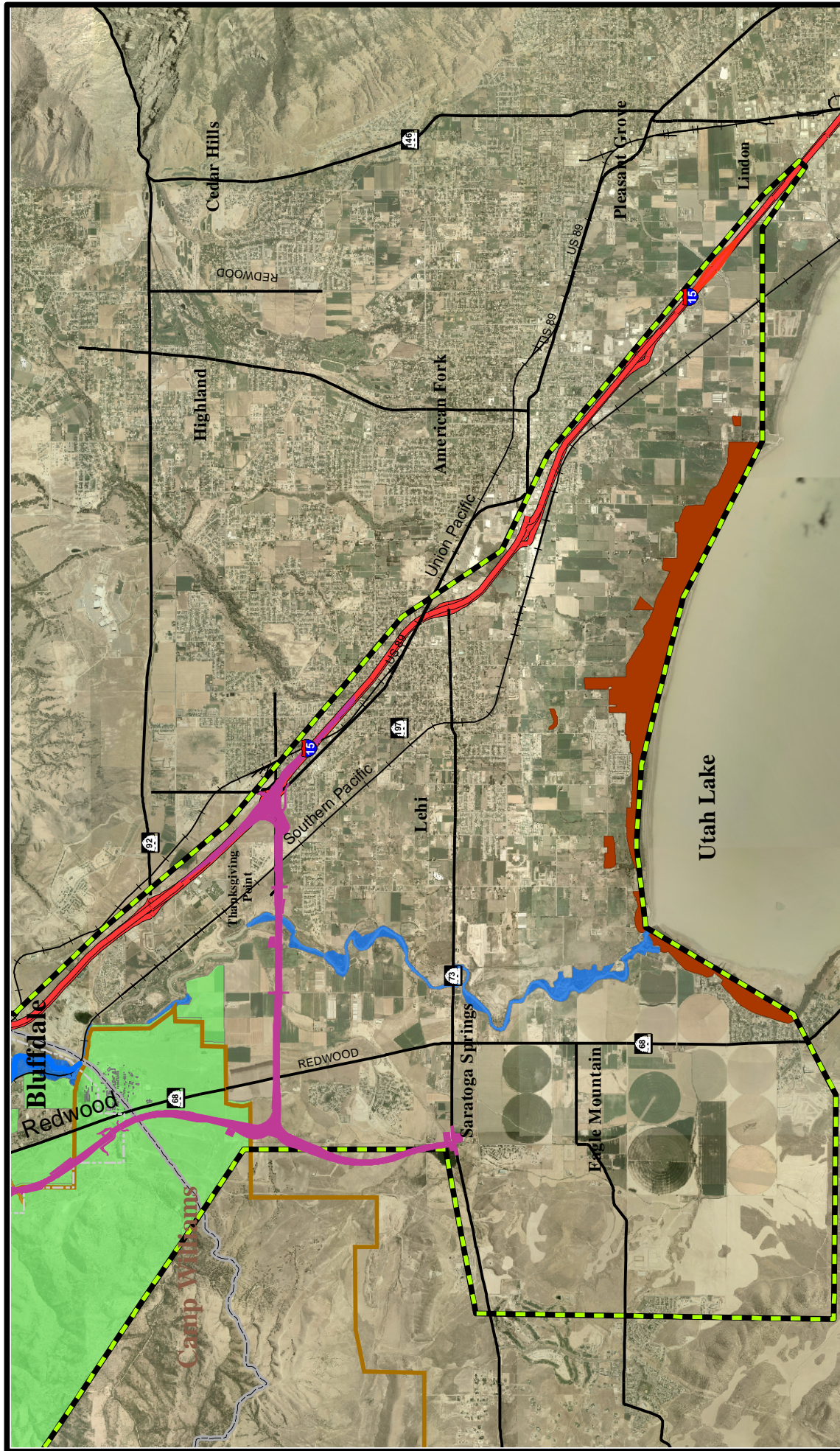
- Wetlands
- Upland
- Ephemeral Drainage
- Riparian

- Study Area Boundary
- Interstate/Freeway
- Major Streets
- Southern Freeway Alternative



Wildlife Habitat -
Utah County -
Southern Freeway
Alternative

Figure 15-12



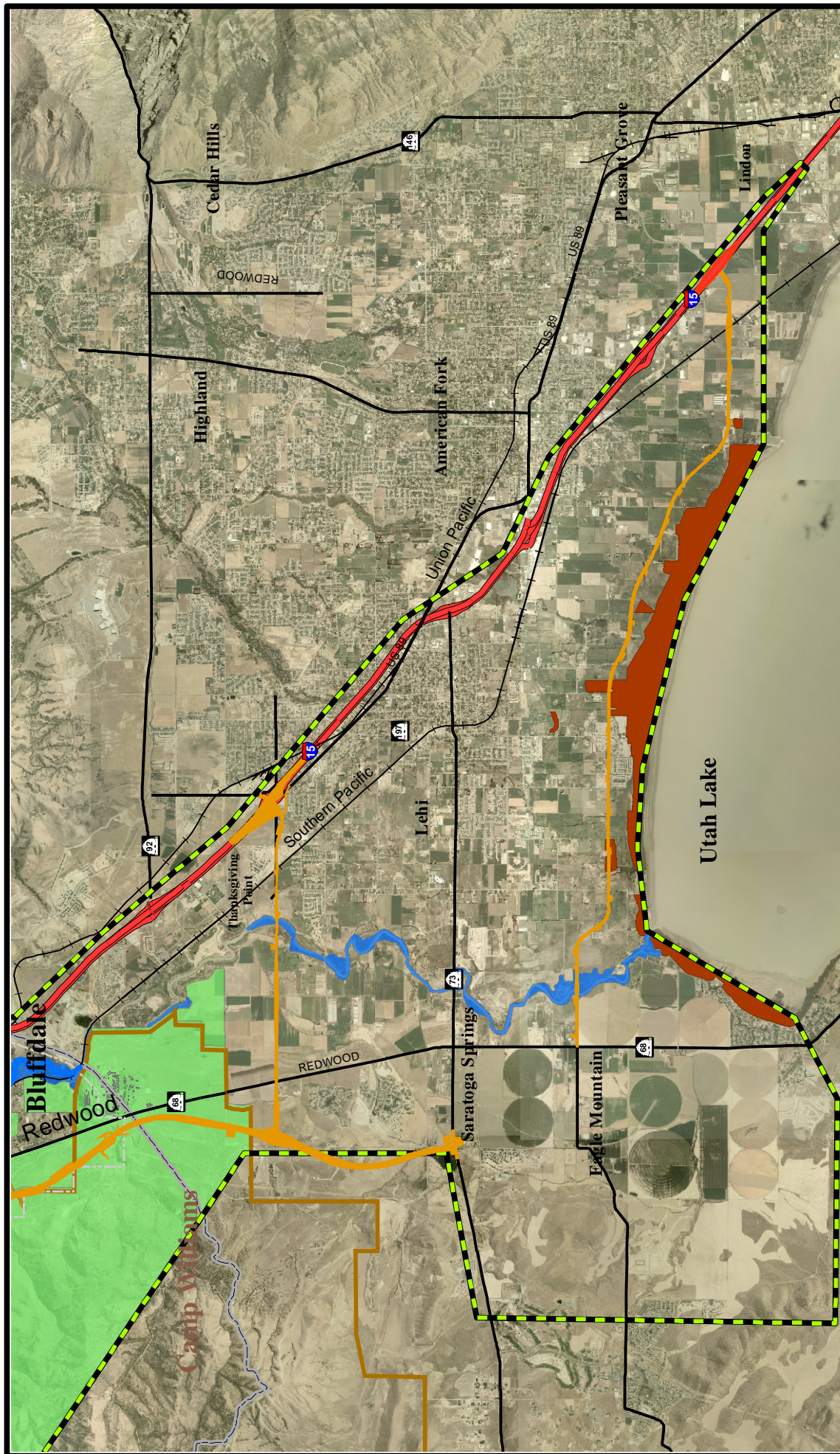
ENVIRONMENTAL
IMPACT STATEMENT

- Study Area Boundary
- Interstate/Freeway
- Major Streets
- 2100 North Freeway Alternative
- Wetlands
- Upland
- Ephemeral Drainage
- Riparian



Wildlife Habitat -
Utah County -
2100 North Freeway
Alternative

Figure 15-13



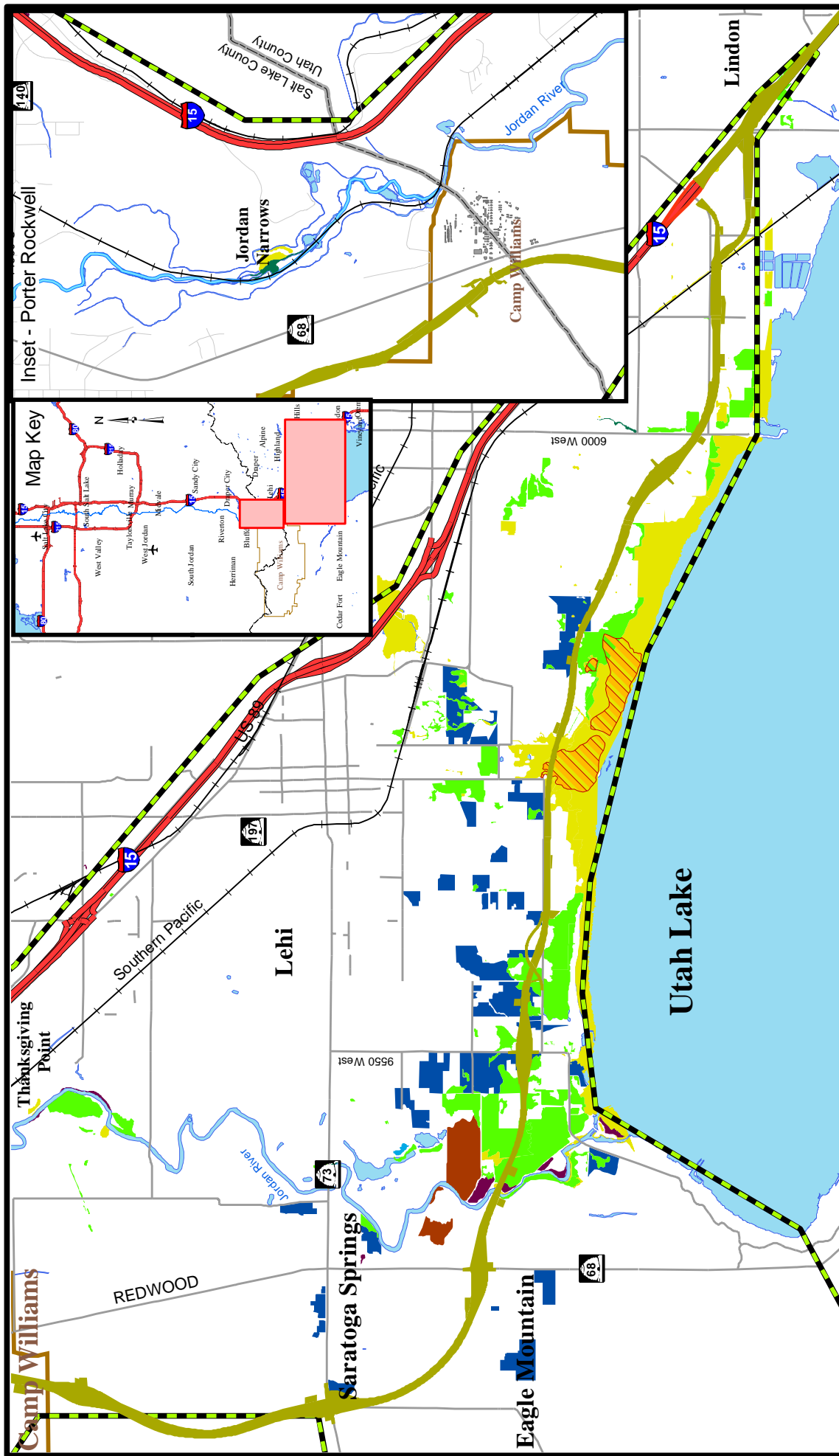
ENVIRONMENTAL
IMPACT STATEMENT

- Study Area Boundary
- Interstate/Freeway
- Major Streets
- Arterials Alternative
- Wetlands
- Upland
- Ephemeral Drainage
- Riparian



Wildlife Habitat -
Utah County -
Arterials
Alternative

Figure 15-14



- Study Area Boundary
- Interstate/Freeway
- Collector/Arterial
- Southern Freeway Alternative

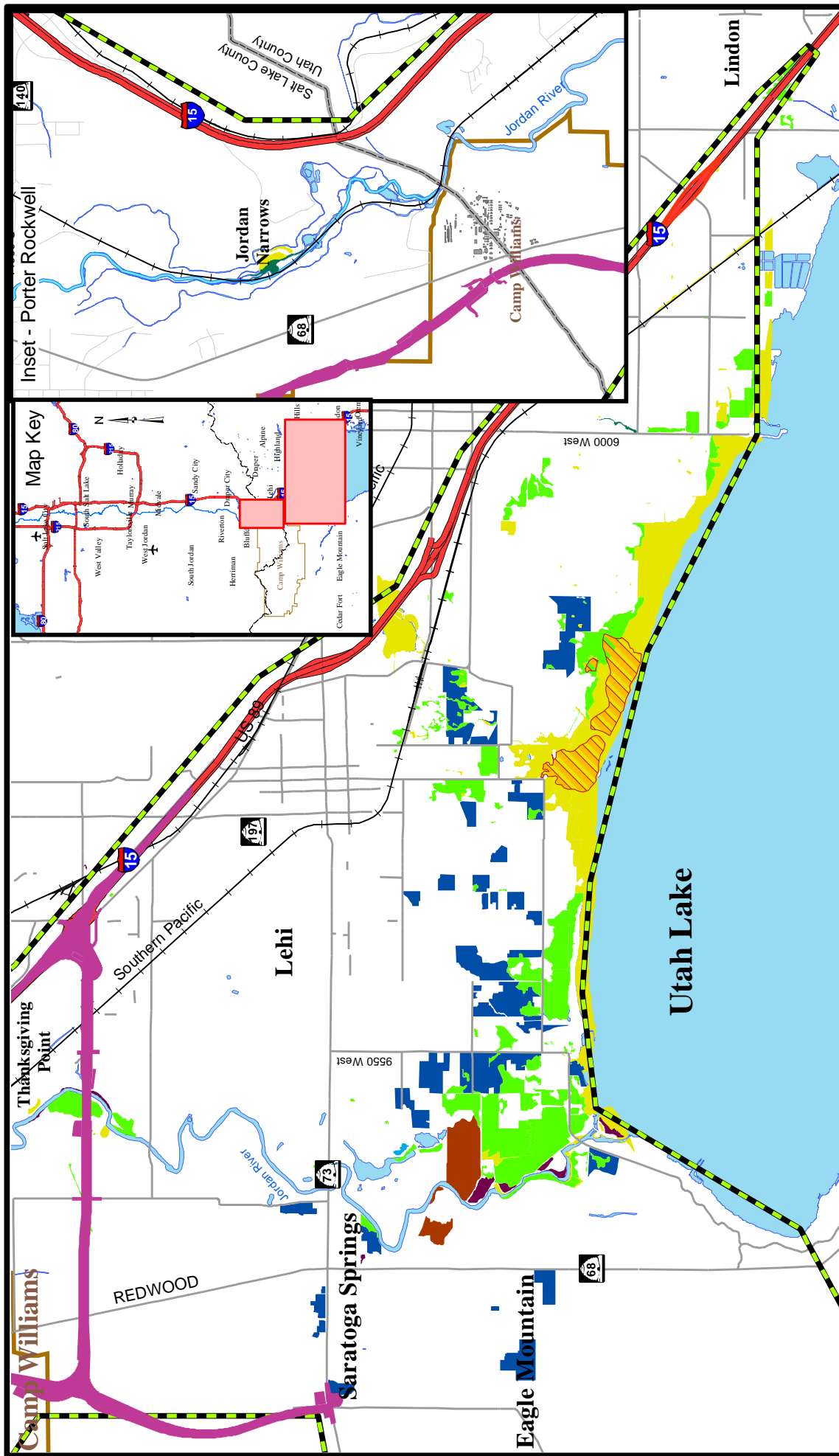
- Field Assessment Wetland Inventory
- Emergent Marsh Types
- Lolium Arundinaceum
- Playa Types

- Riparian
- Scrub-Shrub Types
- Wet Meadow Types
- Wetland
- Peteetneeet soils



Wetland Locations -
Southern Freeway
Alternative

Figure 15-15



Study Area Boundary

- Interstate/Freeway
- Collector/Arterial
- 2100 North Freeway Alternative

Field Assessment Wetland Inventory

- Emergent Marsh Types
- Lolium Arundinaceum
- Playa Types

Wetland Locations - 2100 North Freeway Alternative

- Riparian
- Scrub-Shrub Types
- Wet Meadow Types
- Wetland
- Peteteet soils

Map Key

- West Valley
- South Will Lake
- Holladay
- Tripple Creek
- West Jordan
- South Jordan
- Herriman
- Blaine
- Riverton
- Duane
- Alpine
- Highland
- Cedar Fort
- Eagle Mountain
- Alone
- Vineyard

Scale

0 0.25 0.5 0.75 1 Mile

North Arrow

Figure 15-16

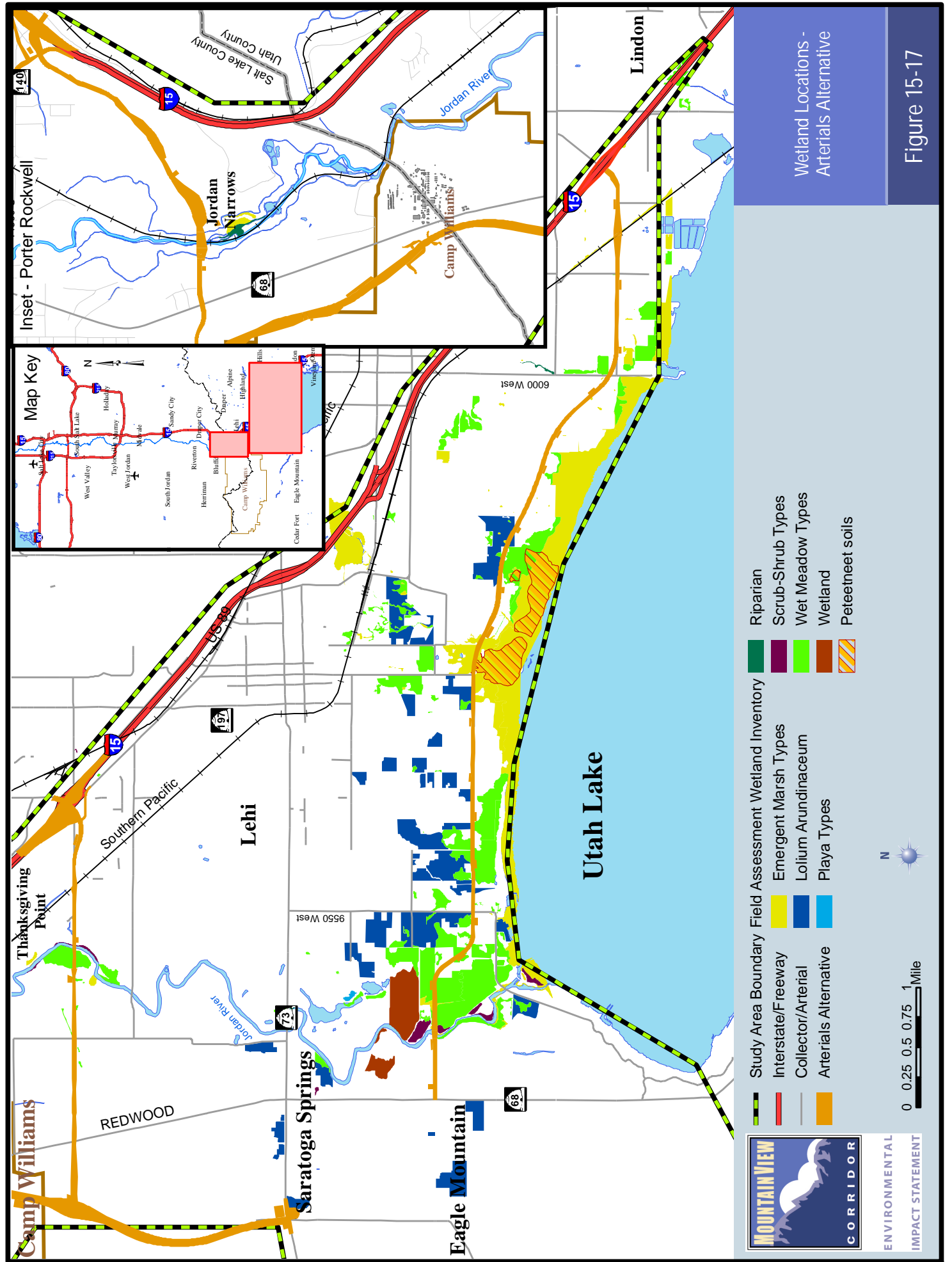
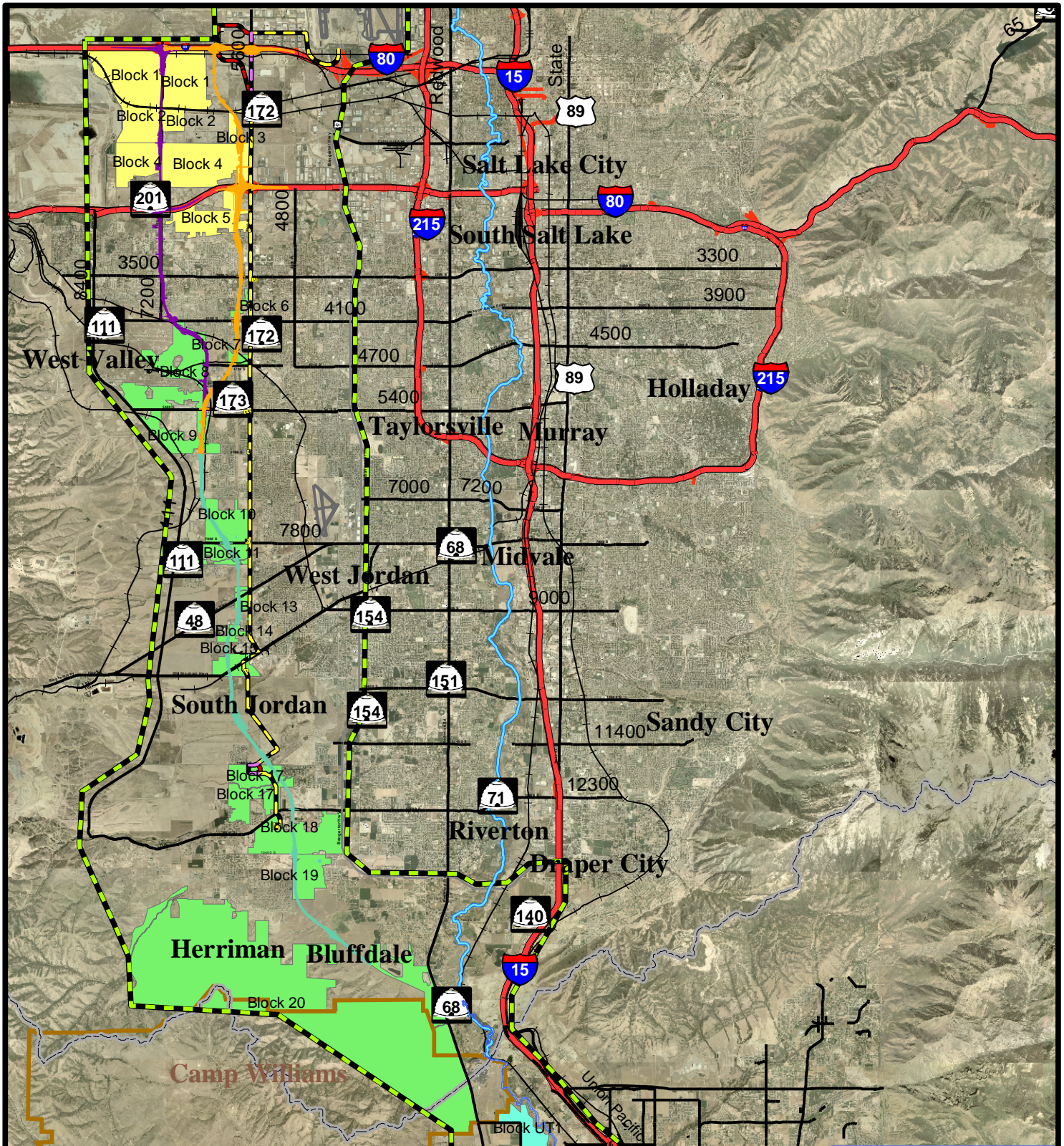


Figure 15-17



Study Area Boundary	Interstate/Freeway	Playa
Major Streets	Center & Mixed Use	Upland
7200 West Freeway	Center Running	Agricultural
5800 West Freeway	Mixed Use	
5800/7200 West Freeway	Park-N-Ride Lot	

Transit

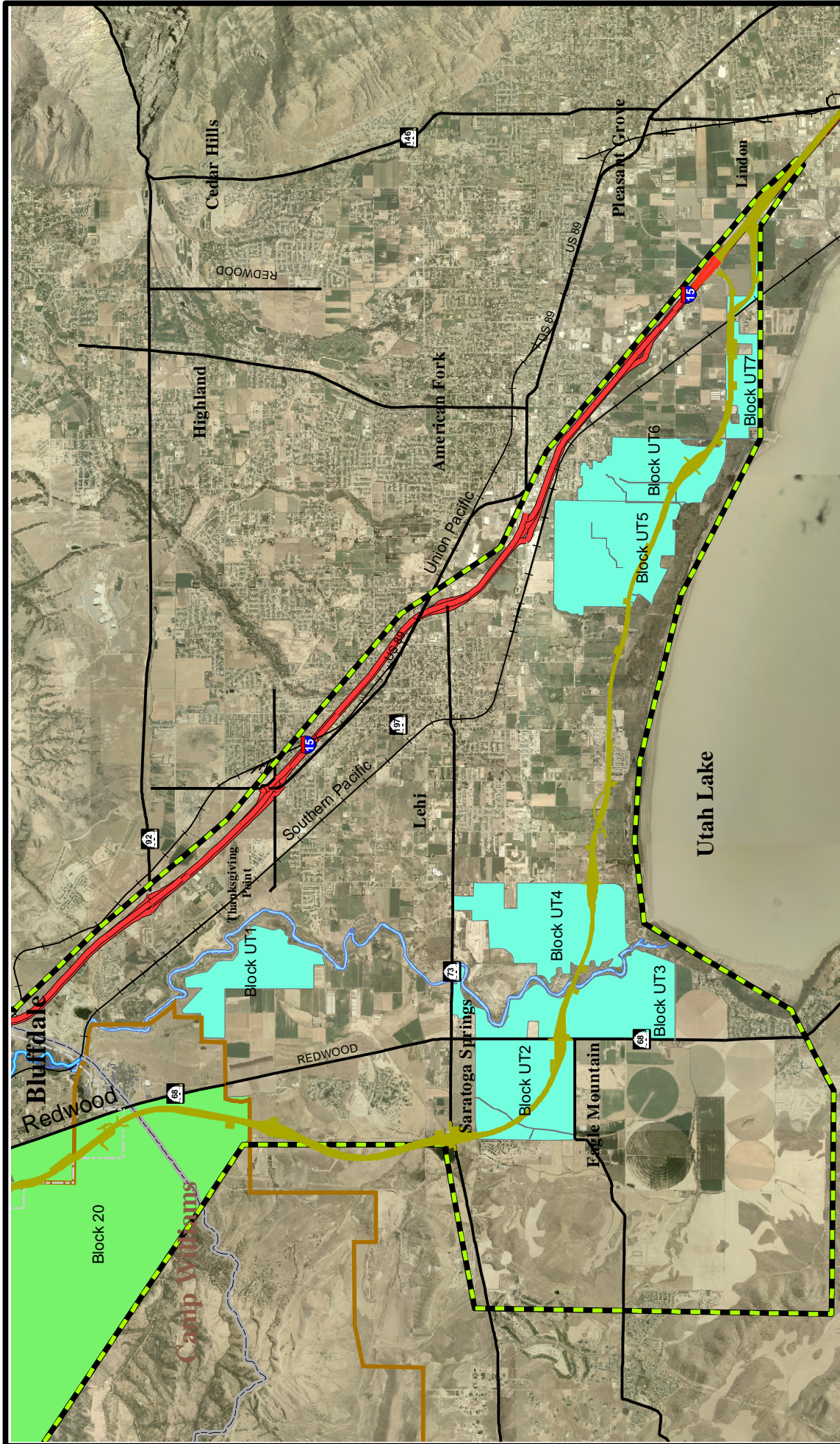
Habitat

0 1.25 2.5 3.75 5 Mile

N

Habitat Fragmentation Analysis - Salt Lake County

Figure 15-18



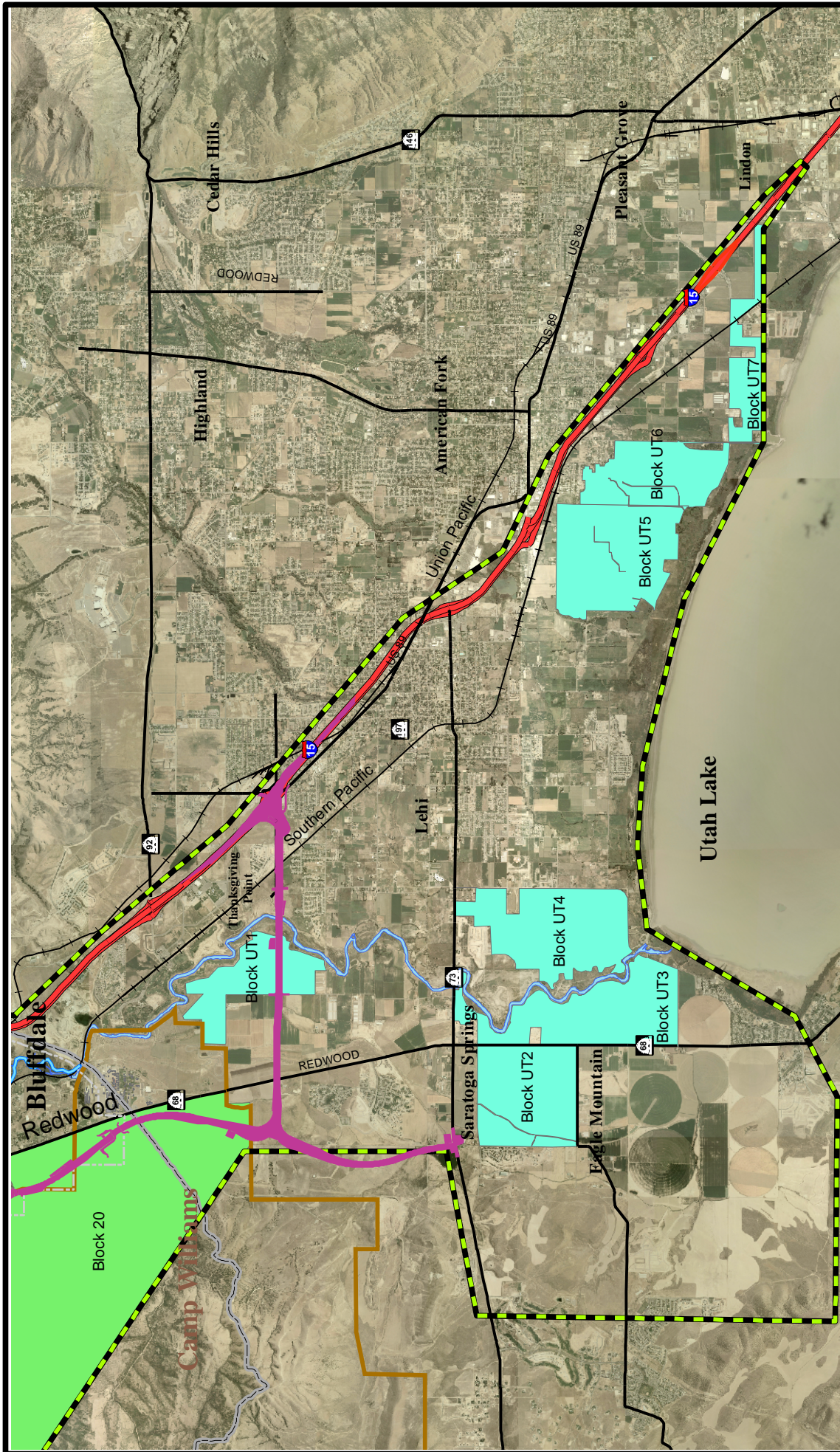
ENVIRONMENTAL
IMPACT STATEMENT

- Study Area Boundary
- Interstate/Free way
- Major Streets
- Southern Freeway Alternative
- Habitat Playa
- Habitat Upland
- Habitat Agricultural



Habitat Fragmentation
Analysis -
Utah County -
Southern Freeway
Alternative

Figure 15-19



ENVIRONMENTAL
IMPACT STATEMENT

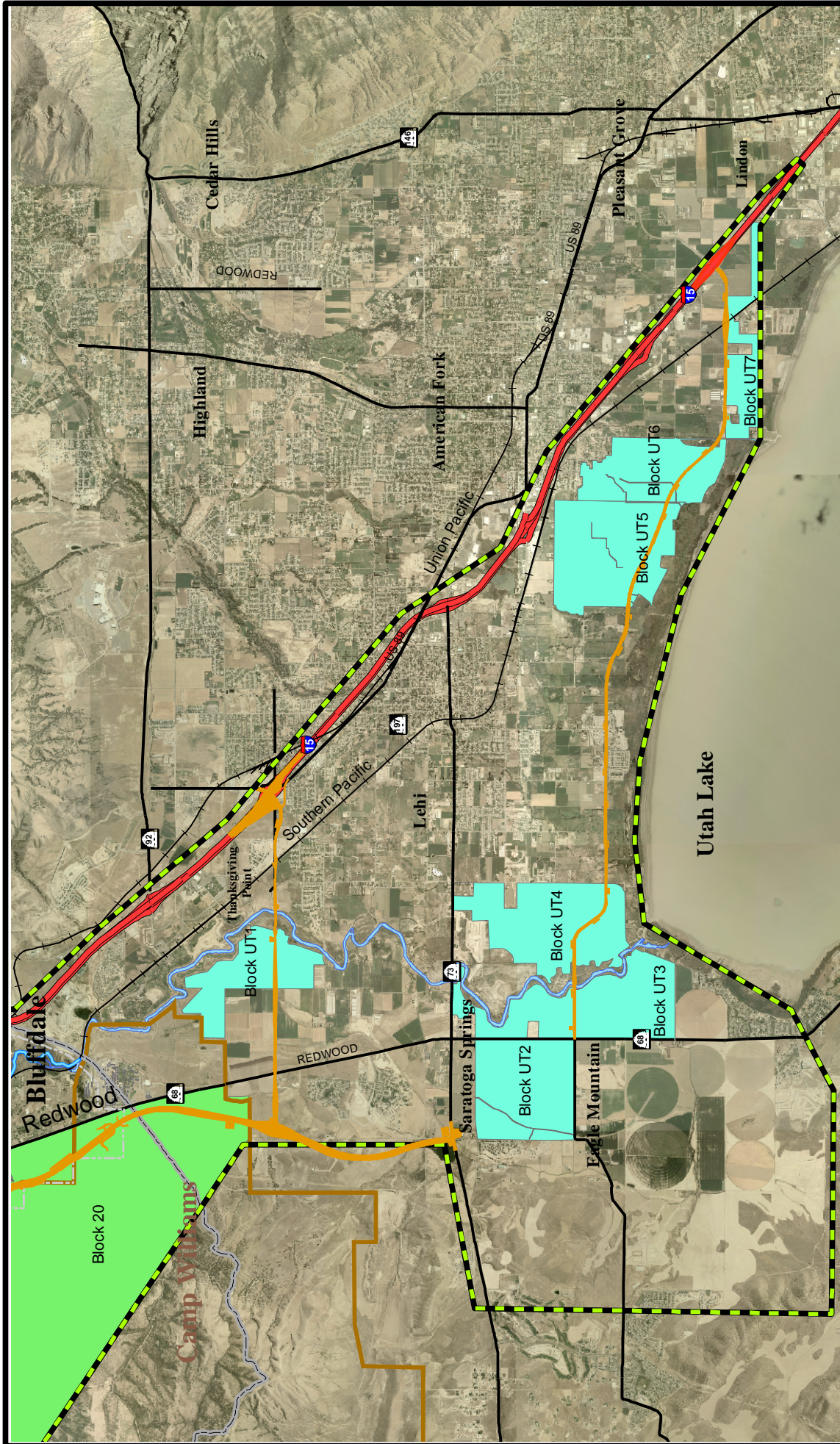
- Study Area Boundary
- Interstate/Free way
- Major Streets
- 2100 North Freeway Alternative

- Habitat**
- Playa
- Upland
- Agricultural



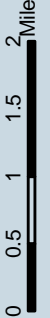
Habitat Fragmentation
Analysis -
Utah County -
2100 North Freeway
Alternative

Figure 15-20



ENVIRONMENTAL
IMPACT STATEMENT

- Study Area Boundary Habitat
- Interstate/Free way
- Major Streets
- Arterials Alternative
- Playa
- Upland
- Agricultural

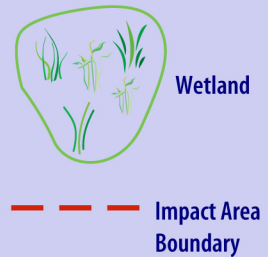


Habitat Fragmentation
Analysis -
Utah County -
Arterials
Alternative

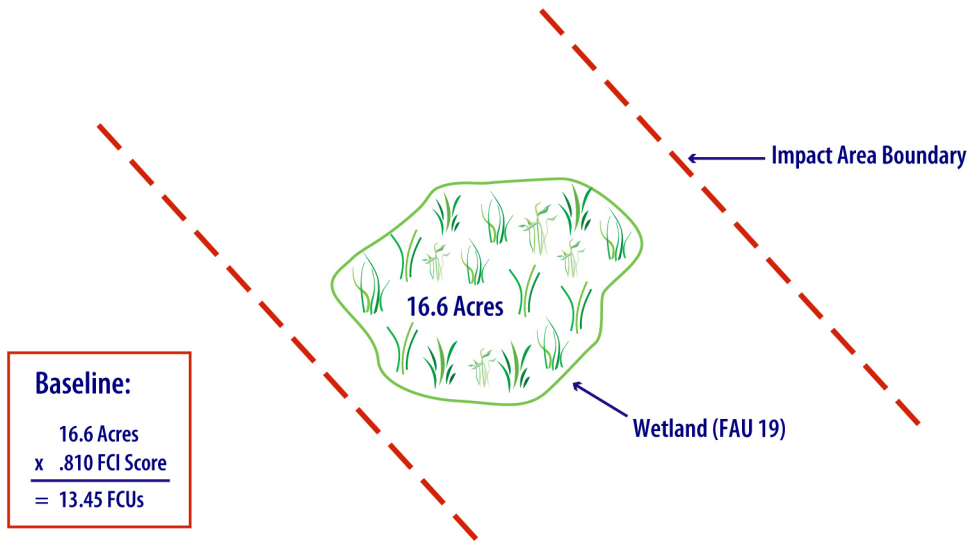
Figure 15-21



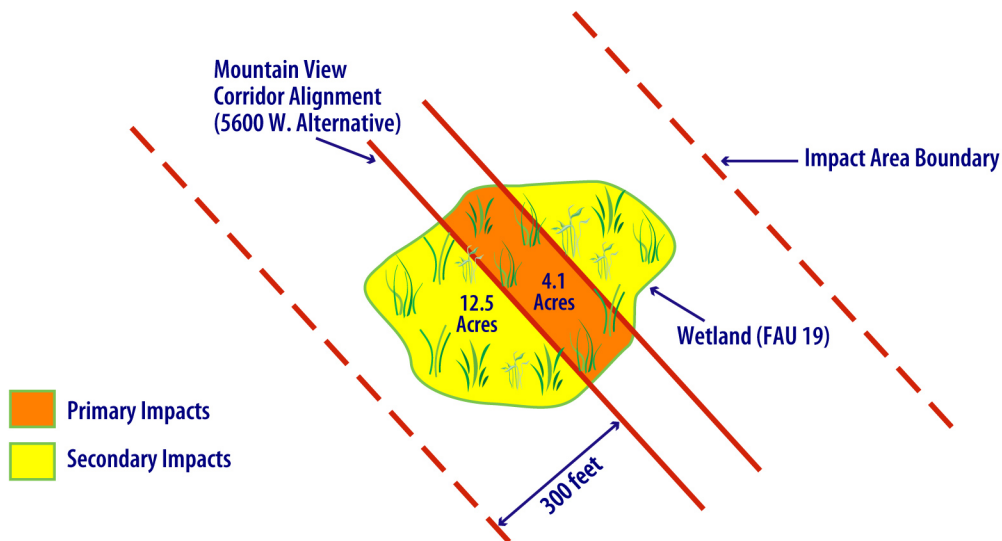
LEGEND:



Assessing Baseline Functional Capacity Units (FCUs)



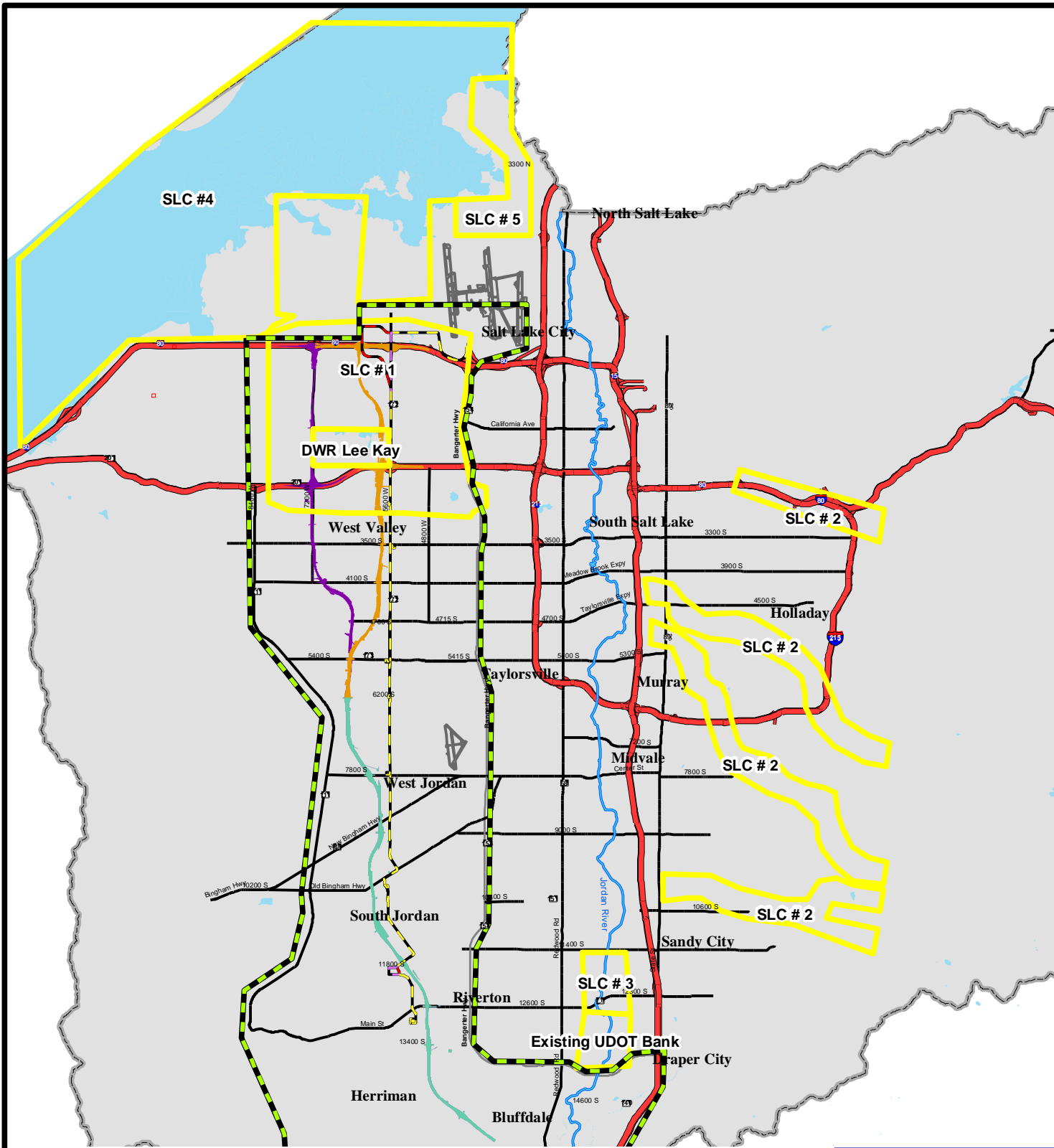
Assessing Wetland Impacts Using Functional Capacity Units (FCUs)



NOT TO SCALE

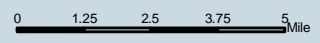
Wetland
Calculation
Example

Figure 15-22



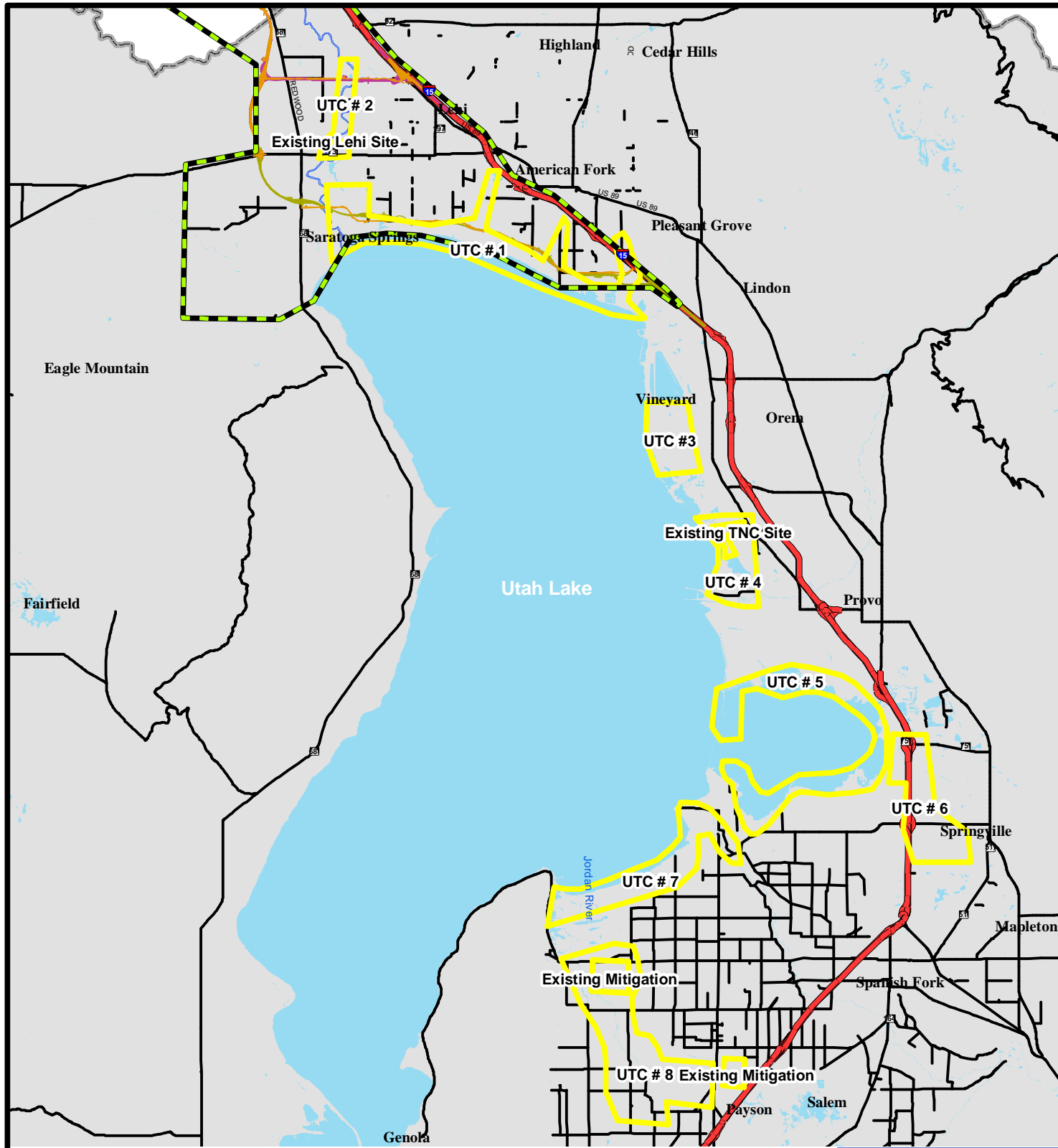
ENVIRONMENTAL
IMPACT STATEMENT

- | | |
|------------------------|------------------------------|
| Study Area | Transit |
| Interstate/Freeway | Center & Mixed Use |
| 5800 West Freeway | Center Running |
| 7200/5800 West Freeway | Mixed Use |
| 7200 West Freeway | Park-N-Ride Lot |
| | Potential Wetland Mitigation |



Potential Wetland
Mitigation Areas -
Salt Lake County

Figure 15-23



Potential Wetland Mitigation Areas - Utah County

Figure 15-24



ENVIRONMENTAL
IMPACT STATEMENT