

**Final Environmental Impact Statement
and
Section 4(f) Evaluation**

September 2008

Submitted pursuant to 42 U.S.C. 4332(2)(c) and 49 U.S.C. 303

by

Federal Highway Administration
Utah Department of Transportation
Utah Transit Authority

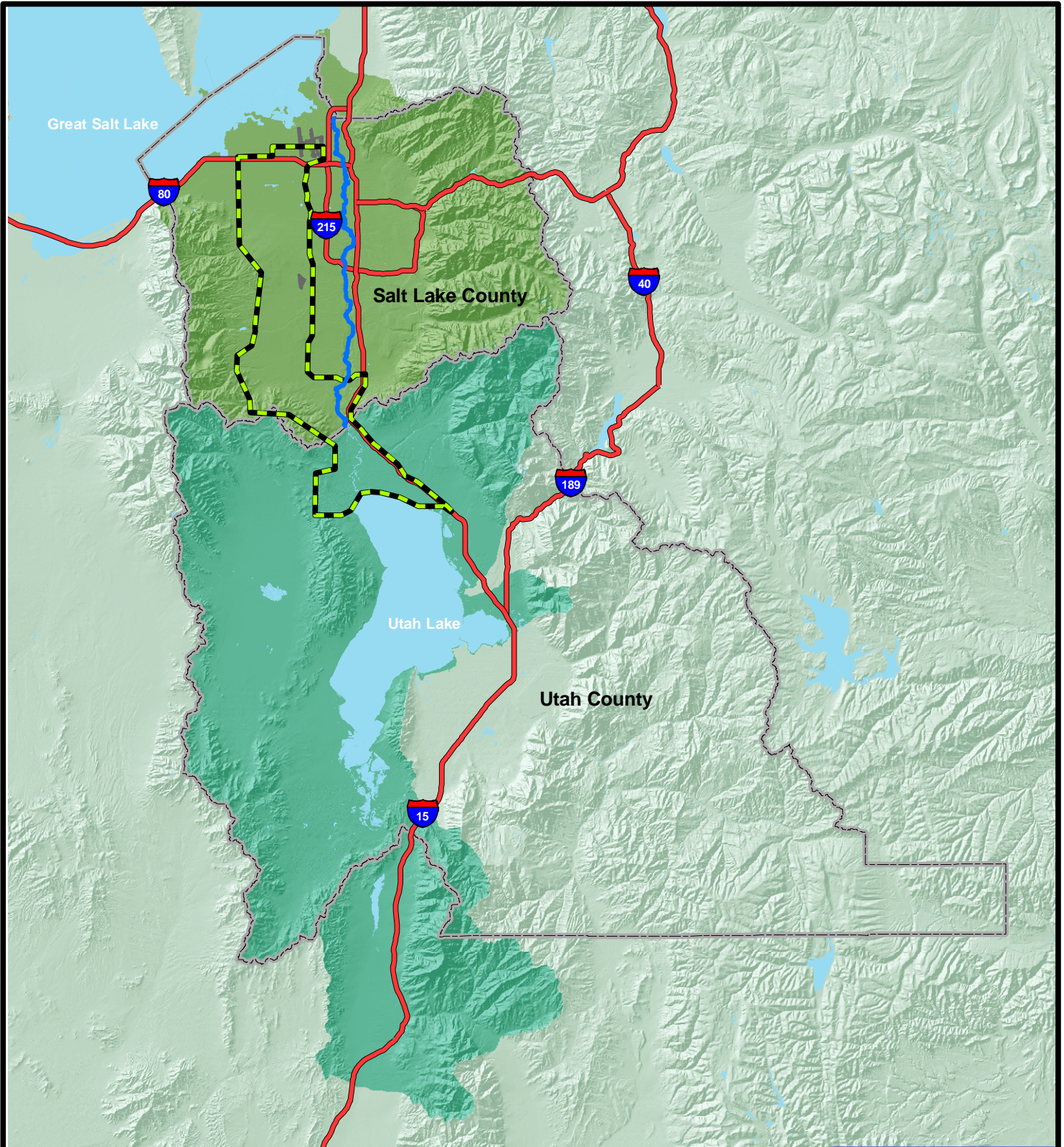
FHWA-UT-EIS-07-02-F

*SP-0067(3)0





Volume 7 of 8

Figures





ENVIRONMENTAL
IMPACT STATEMENT

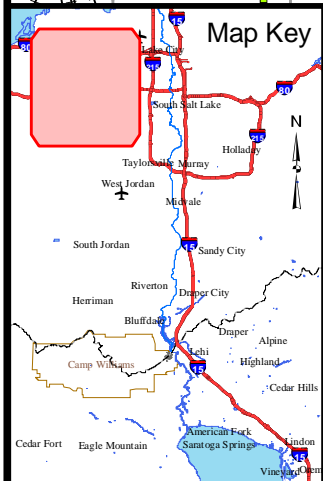
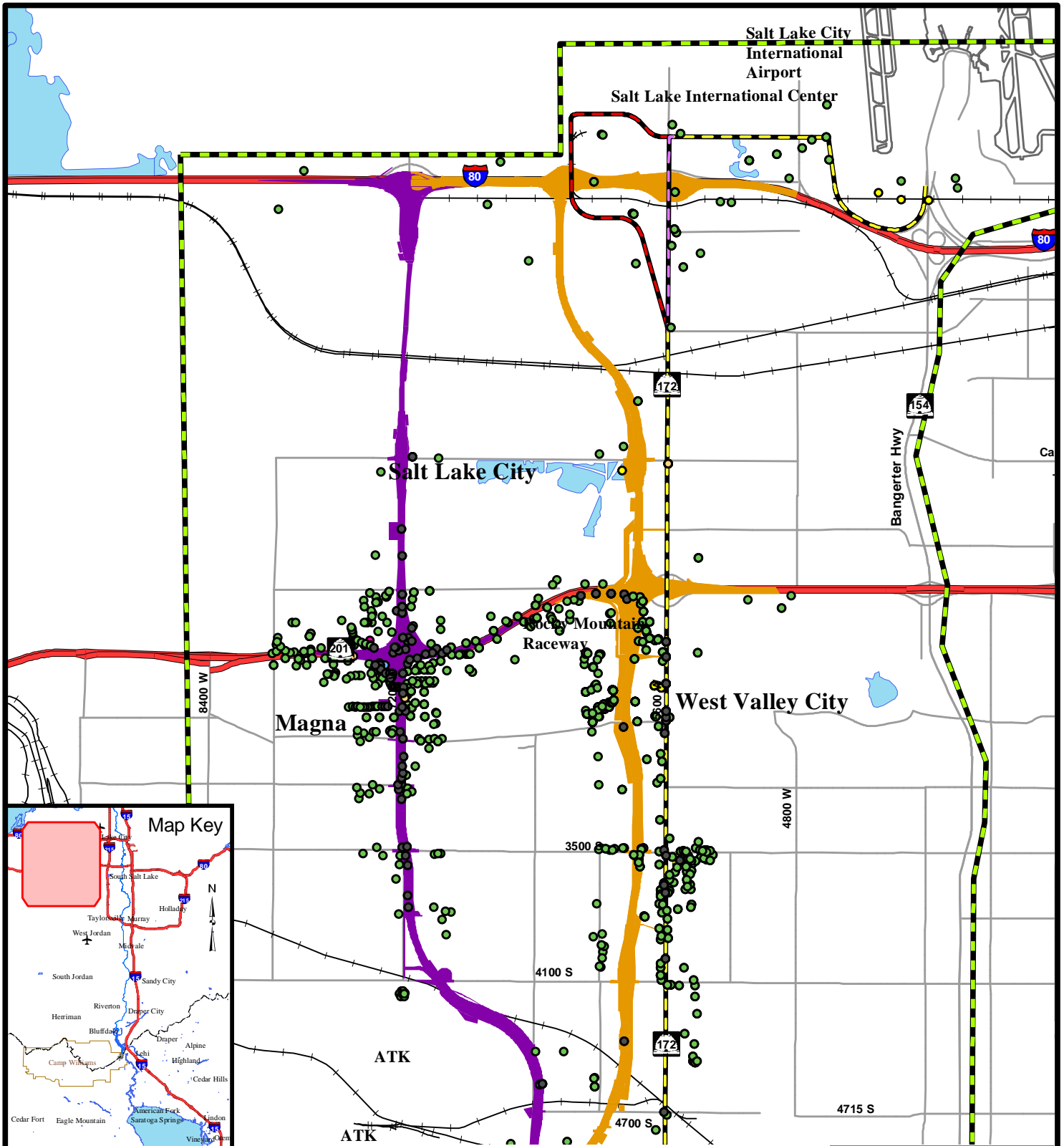
-  Study Area Boundary
-  Interstates
- Watersheds (HUC)**
-  Jordan (16020204)
-  Utah Lake (16020201)

0 2.5 5 7.5 10
Mile



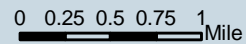
Watersheds and
Water Bodies

Figure 14-1



- Study Area Boundary
- Interstate/Freeway
- Collector/Arterial
- 7200 West Freeway
- 5800 West Freeway
- 7200/5800 West Freeway
- Transit
- Center & Mixed Use
- Center Running
- Mixed Use
- Park-N-Ride Lot
- Drinking Water Groundwater Sources
 - In ROW
 - Outside ROW*
- Drinking Water Surface Sources
 - In ROW
 - Outside ROW*

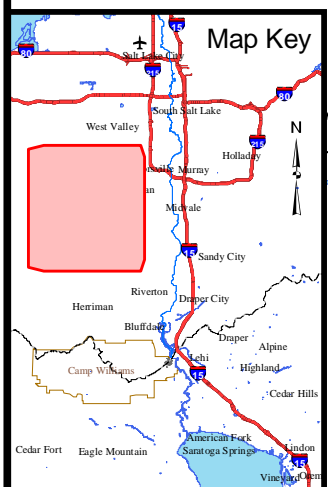
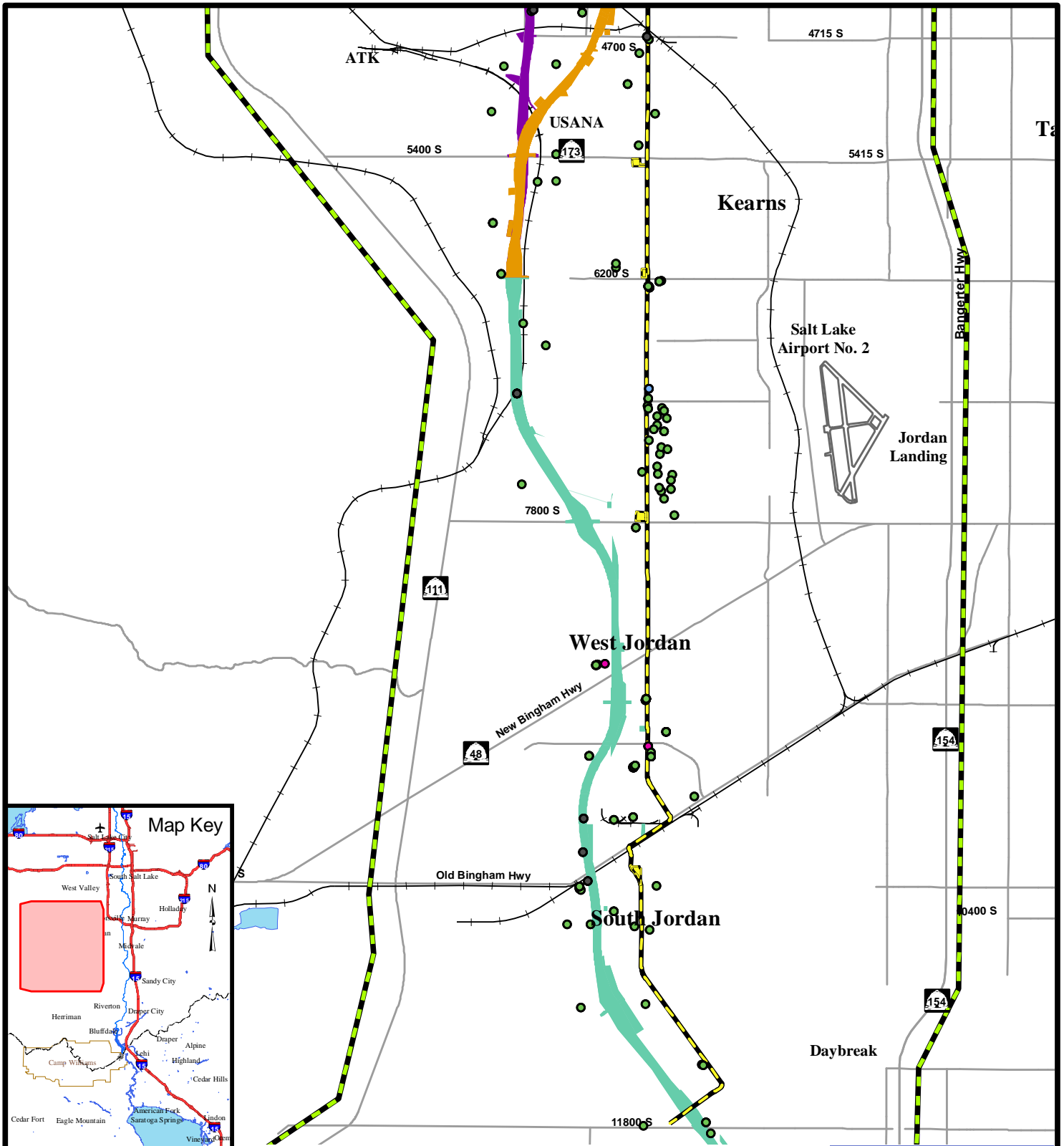
- All Groundwater Sources
 - In ROW
 - Outside ROW*
- All Surface Water Sources
 - In ROW
 - Outside ROW*



*But within 1/4 mile of alternative

Water Sources - I-80 to 4700 South

Figure 14-2



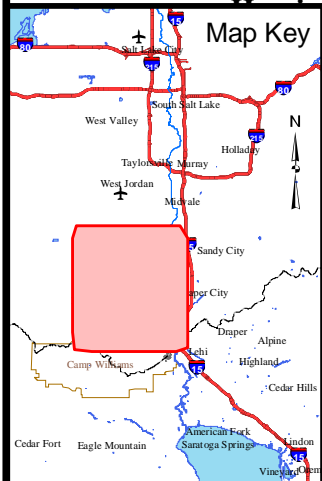
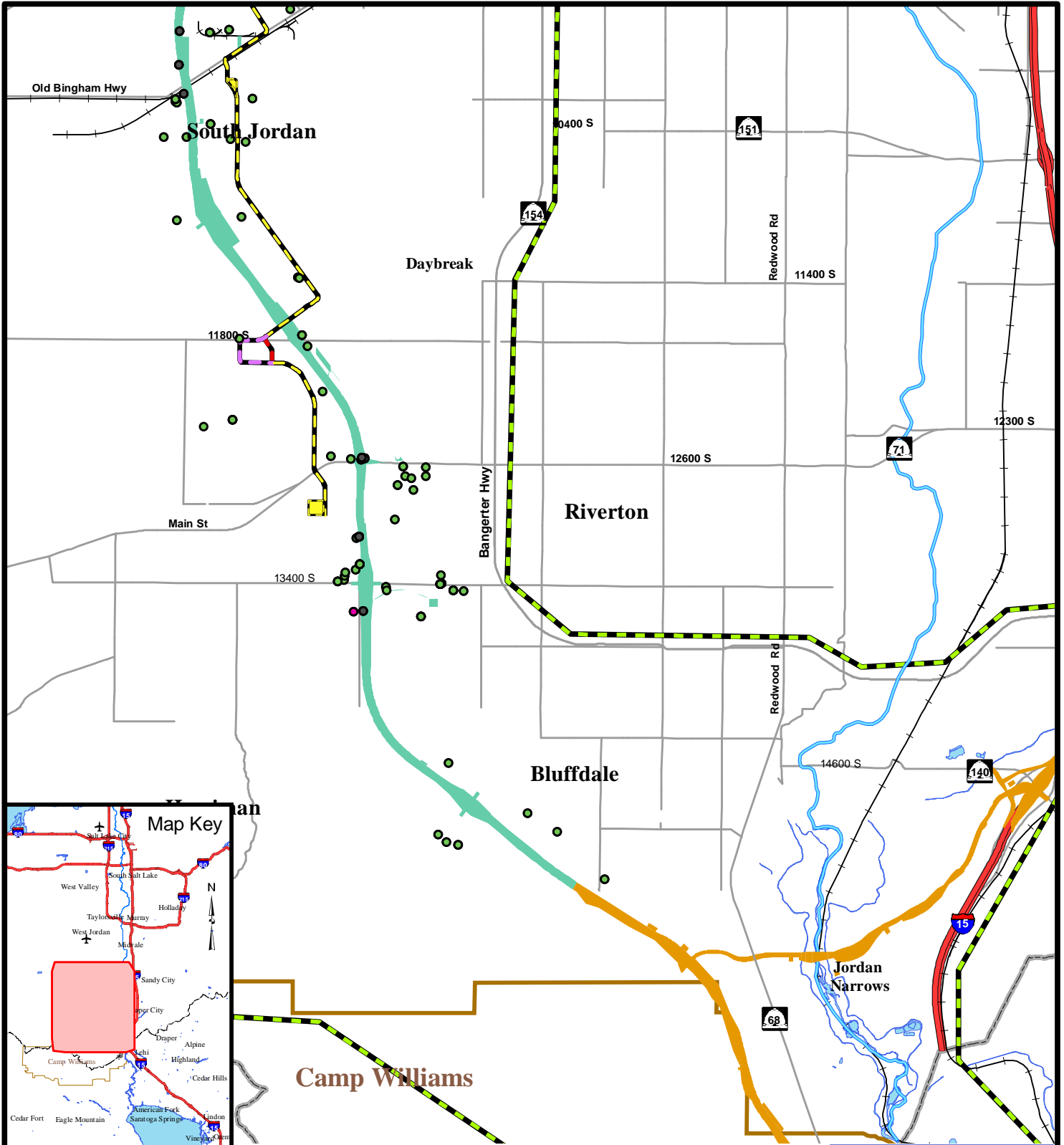
	Study Area Boundary	Drinking Water Groundwater Sources	All Surface Water Sources
	Collector/Arterial	In ROW	In ROW
	7200 West Freeway	Outside ROW*	Outside ROW*
	5800 West Freeway	All Groundwater Sources	
	7200/5800 West Freeway	In ROW	
Center & Mixed Use	Outside ROW*	Drinking Water Surface Sources	
Park-N-Ride Lot	Outside ROW*	In ROW	
		Outside ROW*	

0 0.25 0.5 0.75 1 Mile

*But within 1/4 mile of alternative

Water Sources -
4700 South to
10400 South

Figure 14-3



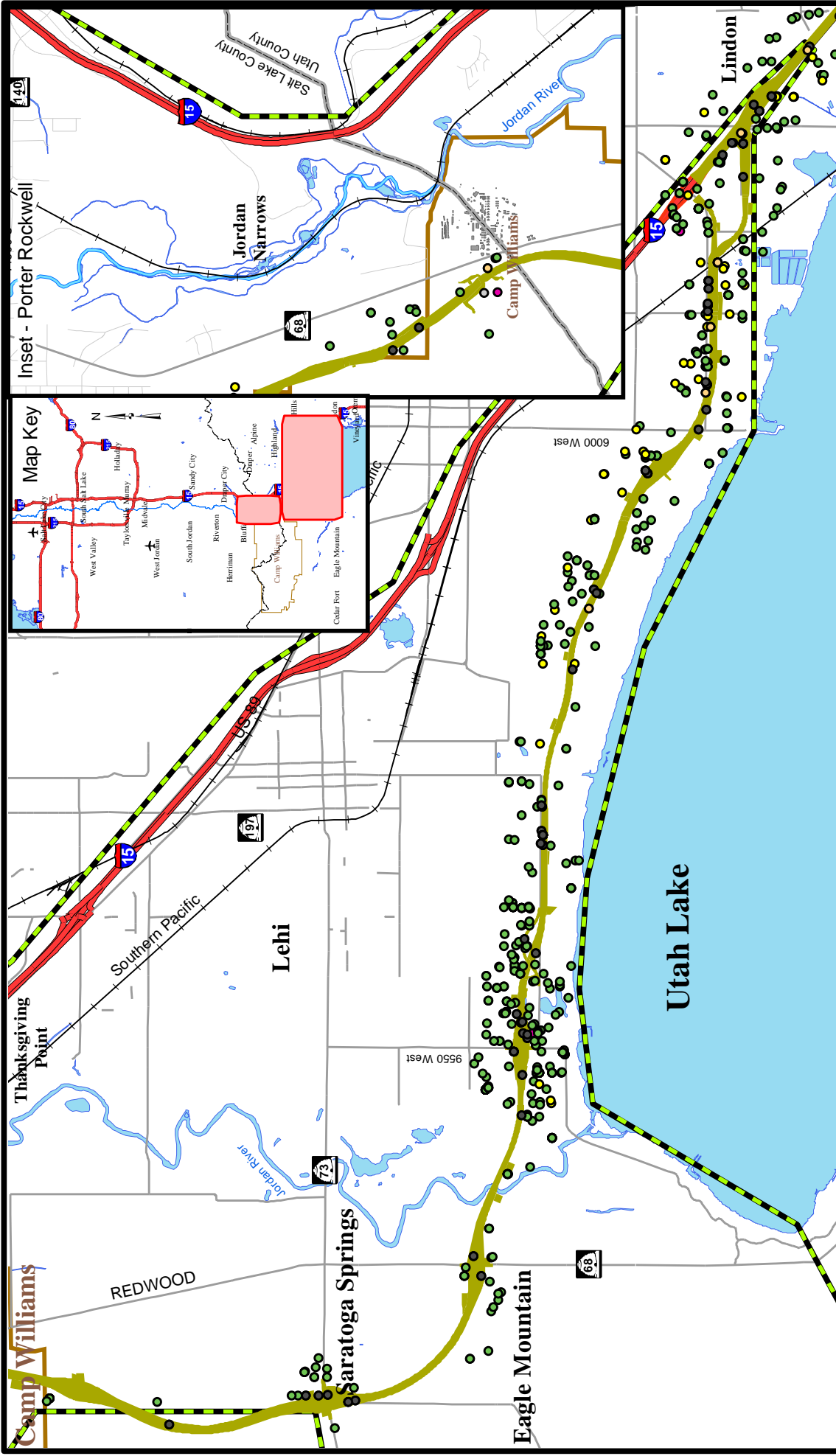
- ▬ Study Area Boundary
- ▬ Interstate/Freeway
- ▬ Collector/Arterial
- ▬ 7200/5800 West Freeway
- ▬ Transit
- ▬ Center & Mixed Use
- ▬ Center Running
- ▬ Mixed Use
- Park-N-Ride Lot
- Drinking Water Groundwater Sources
 - In ROW
 - Outside ROW*
- Drinking Water Surface Sources
 - In ROW
 - Outside ROW*
- All Groundwater Sources
 - In ROW
 - Outside ROW*
- All Surface Water Sources
 - In ROW
 - Outside ROW*

Water Sources -
10400 South to
Utah County Line

Figure 14-4

0 0.25 0.5 0.75 1 Mile

*But within 1/4 mile of alternative



- Study Area Boundary
- Interstate/Freeway
- Collector/Arterial
- Southern Freeway Alternative
- Drinking Water Groundwater Sources
 - In ROW
 - Outside ROW but within 1/4 mile of alternative

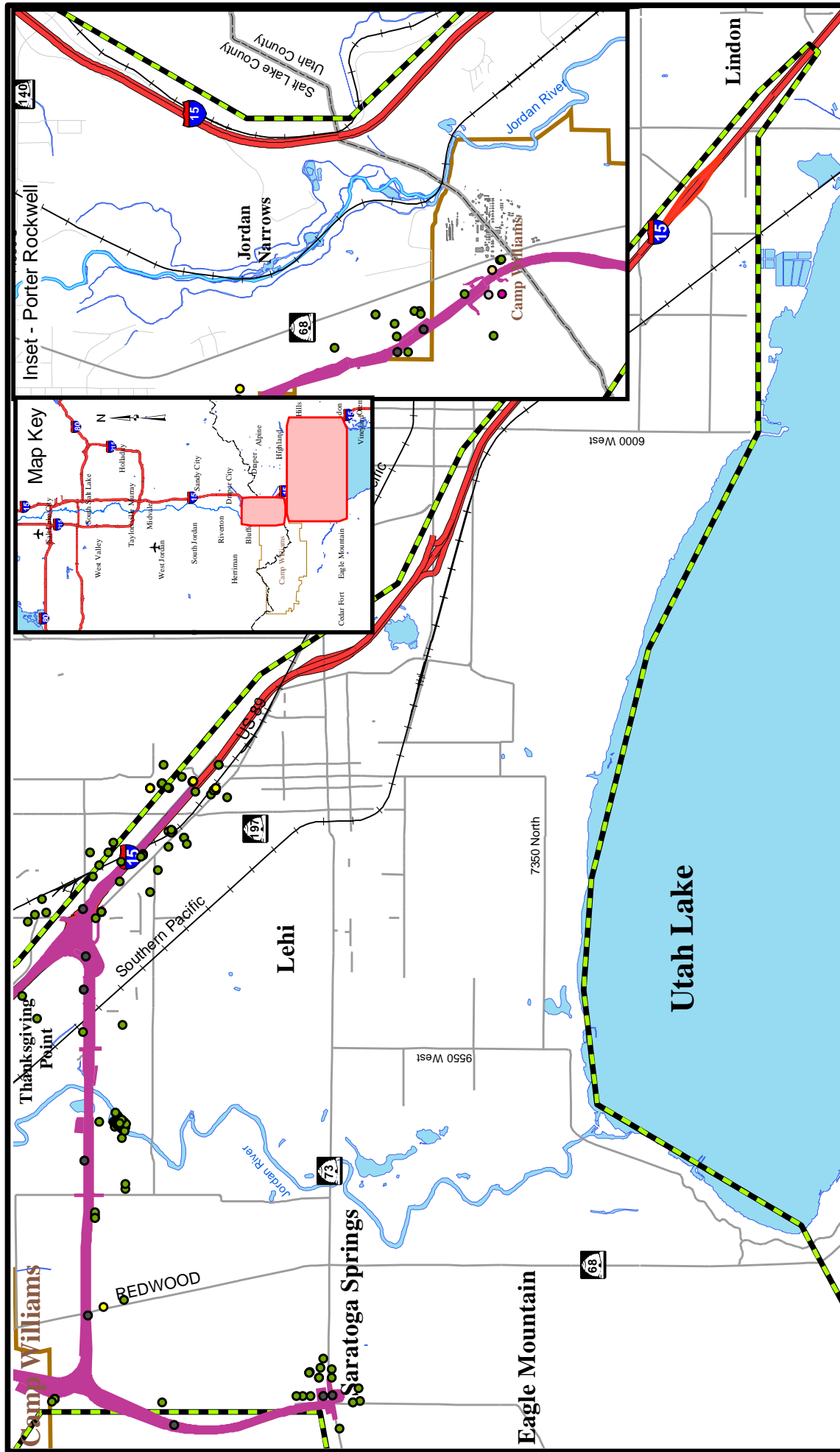
- All Groundwater Sources
 - In ROW
 - Outside ROW but within 1/4 mile of alternative
- Drinking Water Surface Sources
 - none
- All Surface Water Sources
 - In ROW
 - Outside ROW but within 1/4 mile of alternative

0 0.25 0.5 0.75 1 Mile



Water Sources -
Southern Freeway
Alternative

Figure 14-5



- Study Area Boundary
- Interstate/Freeway
- Collector/Arterial
- 2100 North Freeway Alternative
- Drinking Water Groundwater Sources
- In ROW
- Outside ROW but within 1/4 mile of alternative
- 0 0.25 0.5 0.75 1 Mile

- All Groundwater Sources
- In ROW
- Outside ROW but within 1/4 mile of alternative
- Drinking Water Surface Sources
- Outside ROW but within 1/4 mile of alternative
- All Surface Water Sources
- In ROW
- Outside ROW but within 1/4 mile of alternative

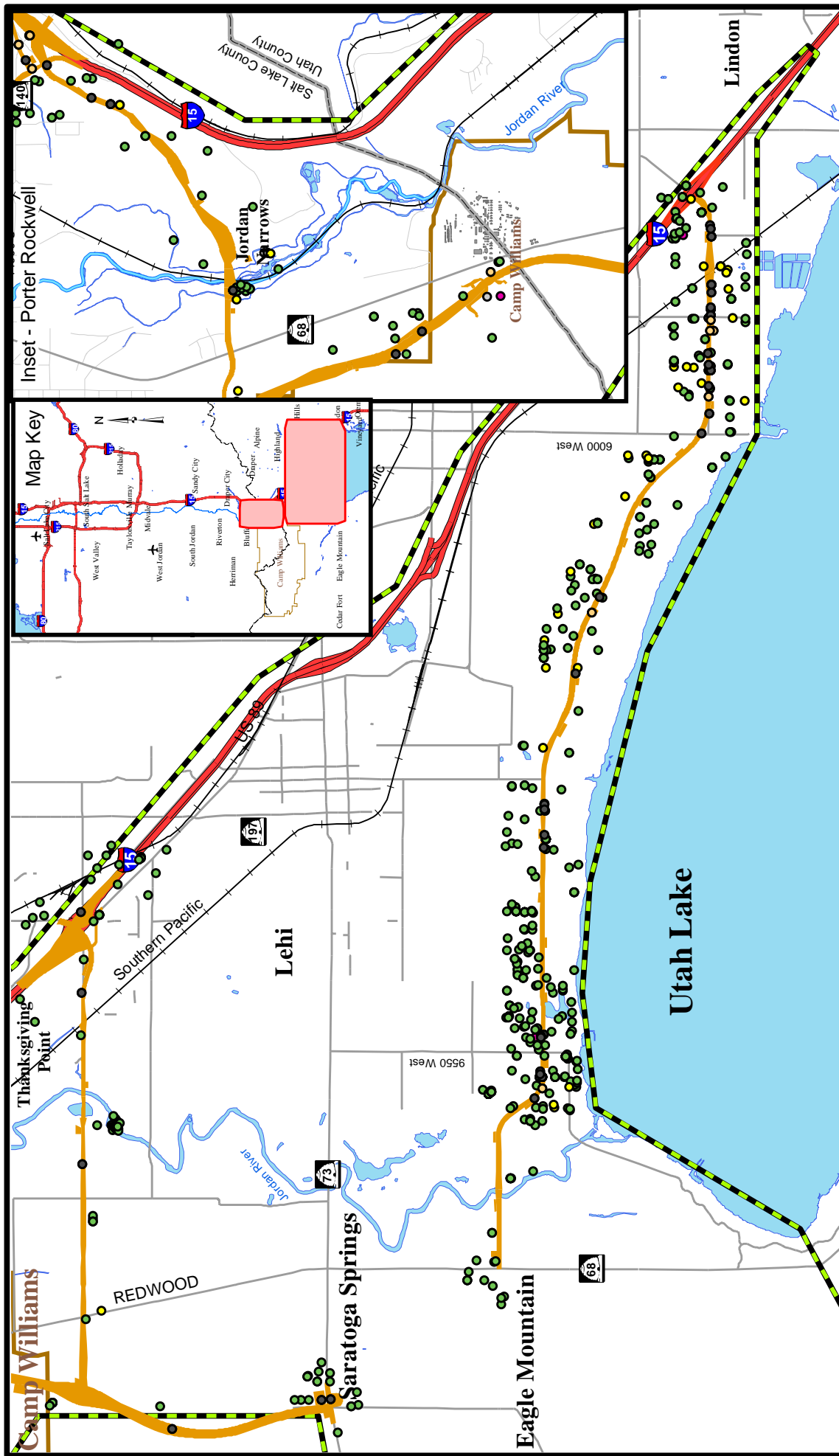
- All Groundwater Sources
- In ROW
- Outside ROW but within 1/4 mile of alternative
- Drinking Water Surface Sources
- Outside ROW but within 1/4 mile of alternative
- All Surface Water Sources
- In ROW
- Outside ROW but within 1/4 mile of alternative

- All Groundwater Sources
- In ROW
- Outside ROW but within 1/4 mile of alternative
- Drinking Water Surface Sources
- Outside ROW but within 1/4 mile of alternative
- All Surface Water Sources
- In ROW
- Outside ROW but within 1/4 mile of alternative

- All Groundwater Sources
- In ROW
- Outside ROW but within 1/4 mile of alternative
- Drinking Water Surface Sources
- Outside ROW but within 1/4 mile of alternative
- All Surface Water Sources
- In ROW
- Outside ROW but within 1/4 mile of alternative

Water Sources -
2100 North Freeway
Alternative

Figure 14-6



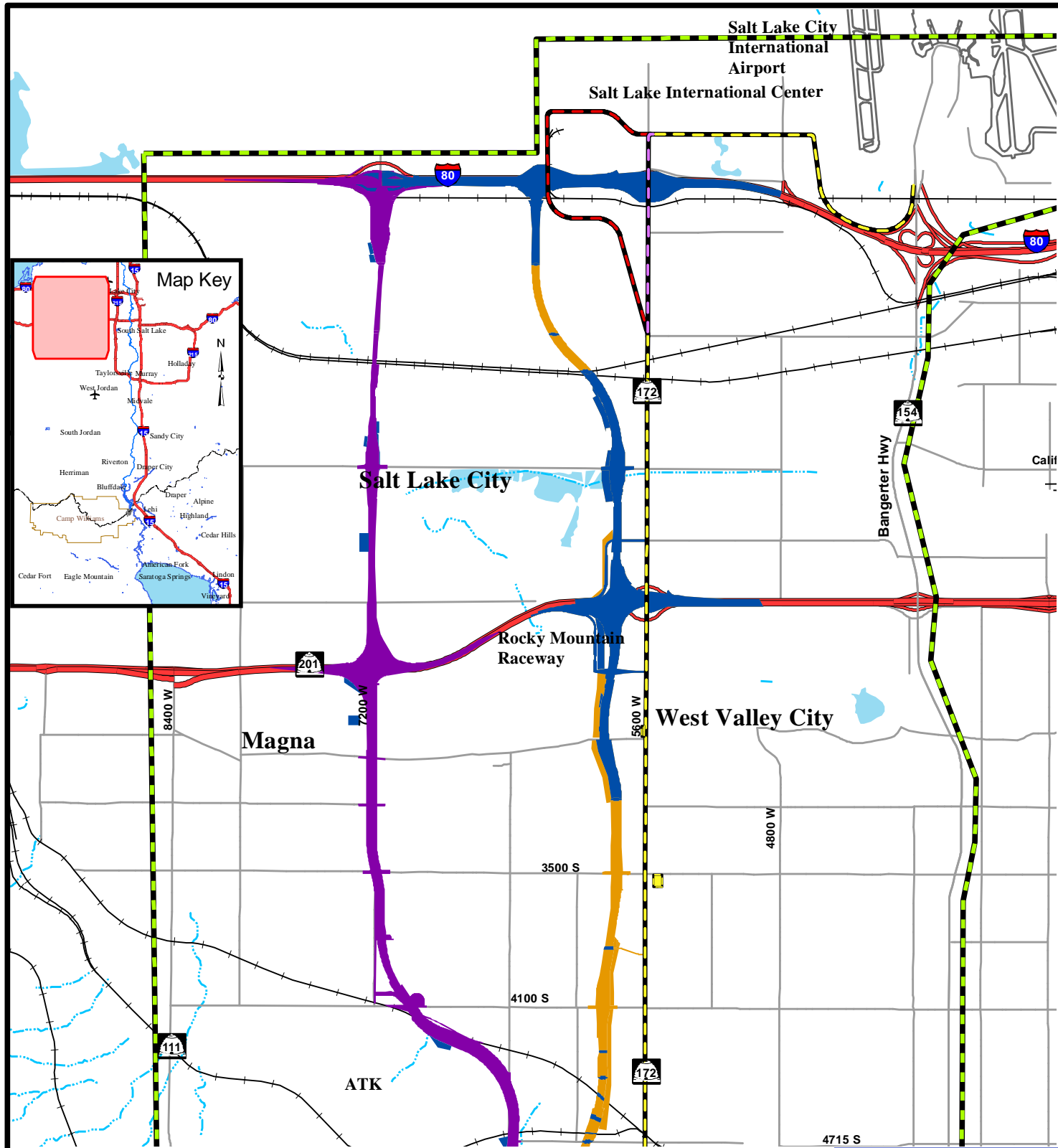
- Study Area Boundary
- Interstate/Freeway
- Collector/Arterial
- Arterials Alternative
- Drinking Water Groundwater Sources
 - In ROW
 - Outside ROW but within 1/4 mile of alternative

- All Groundwater Sources
 - In ROW
 - Outside ROW but within 1/4 mile of alternative
- Drinking Water Surface Sources
 - Outside ROW but within 1/4 mile of alternative
- All Surface Water Sources
 - In ROW
 - Outside ROW but within 1/4 mile of alternative

- Water Sources - Arterials Alternative

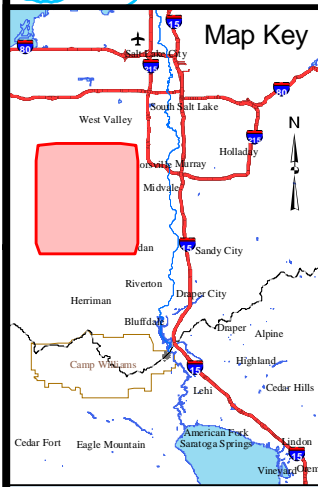
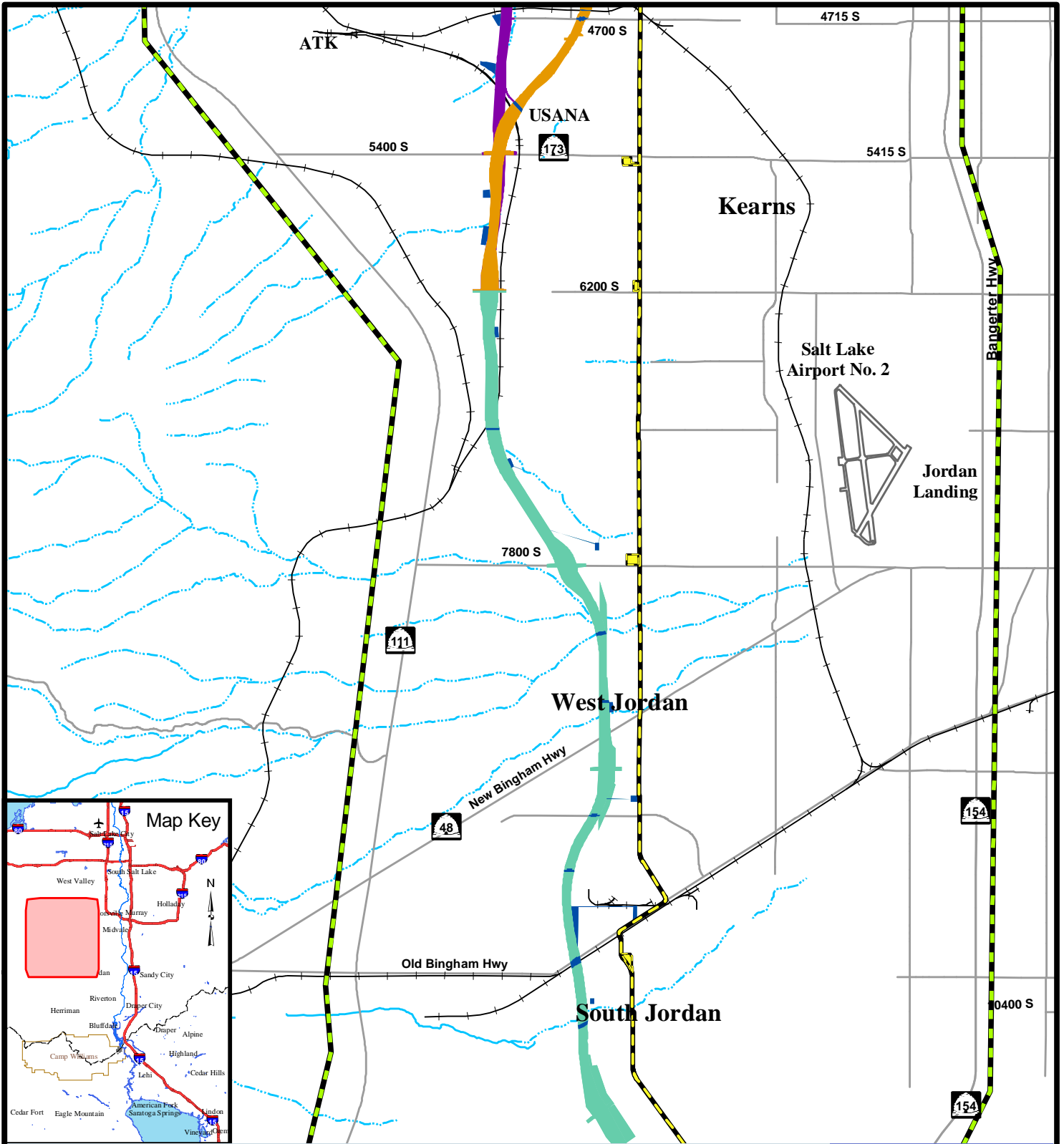


Figure 14-7



Proposed Detention Pond Locations - I-80 to 4700 South

Figure 14-8



MOUNTAIN VIEW CORRIDOR

ENVIRONMENTAL IMPACT STATEMENT

Study Area Boundary	Collector/Arterial	Detention Pond
5800 West Freeway	Park-N-Ride Lot	Stream
7200 West Freeway	Park-N-Ride Lot	Intermittent Stream
7200/5800 West Freeway	Park-N-Ride Lot	

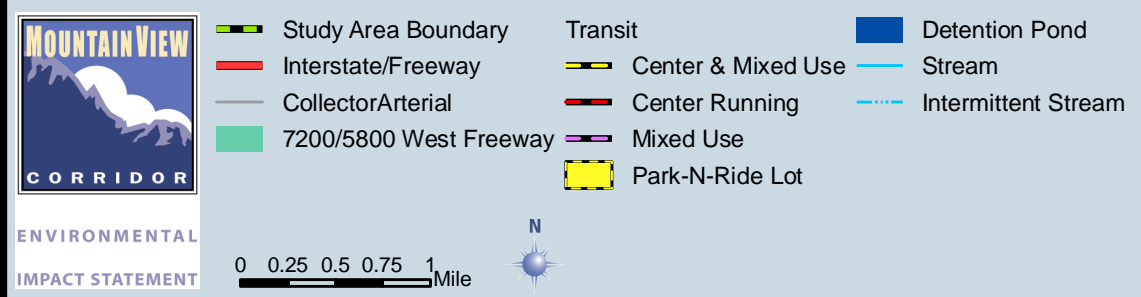
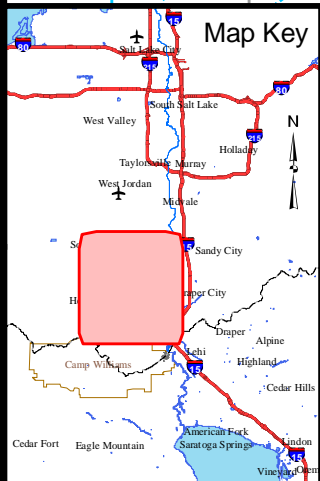
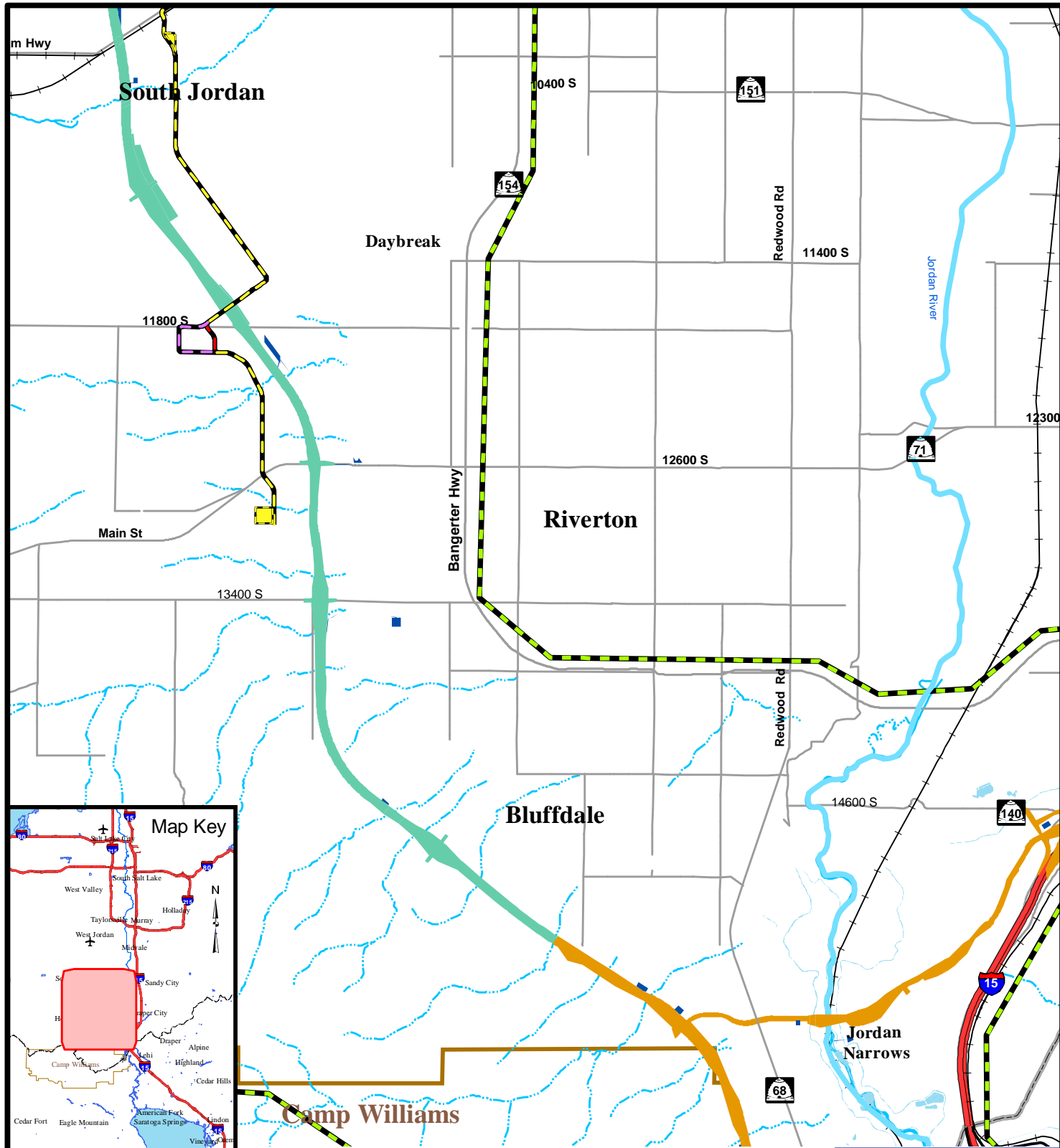
Transit
 Center & Mixed Use
 Park-N-Ride Lot

Scale: 0 0.25 0.5 0.75 1 Mile

North Arrow

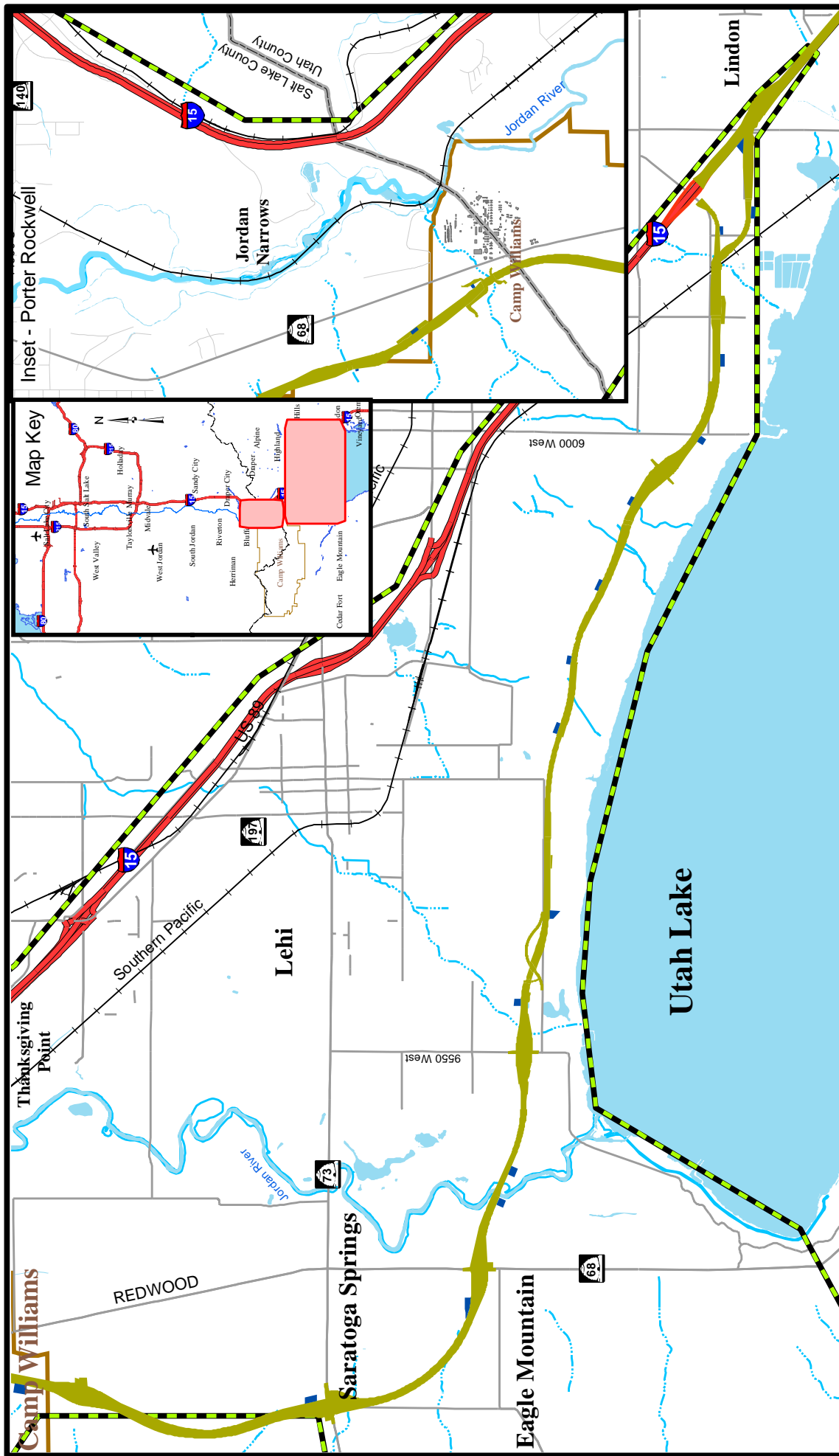
Proposed Detention Pond Locations - 4700 South to 10400 South

Figure 14-9



Proposed Detention Pond Locations - 10400 South to Utah County Line

Figure 14-10



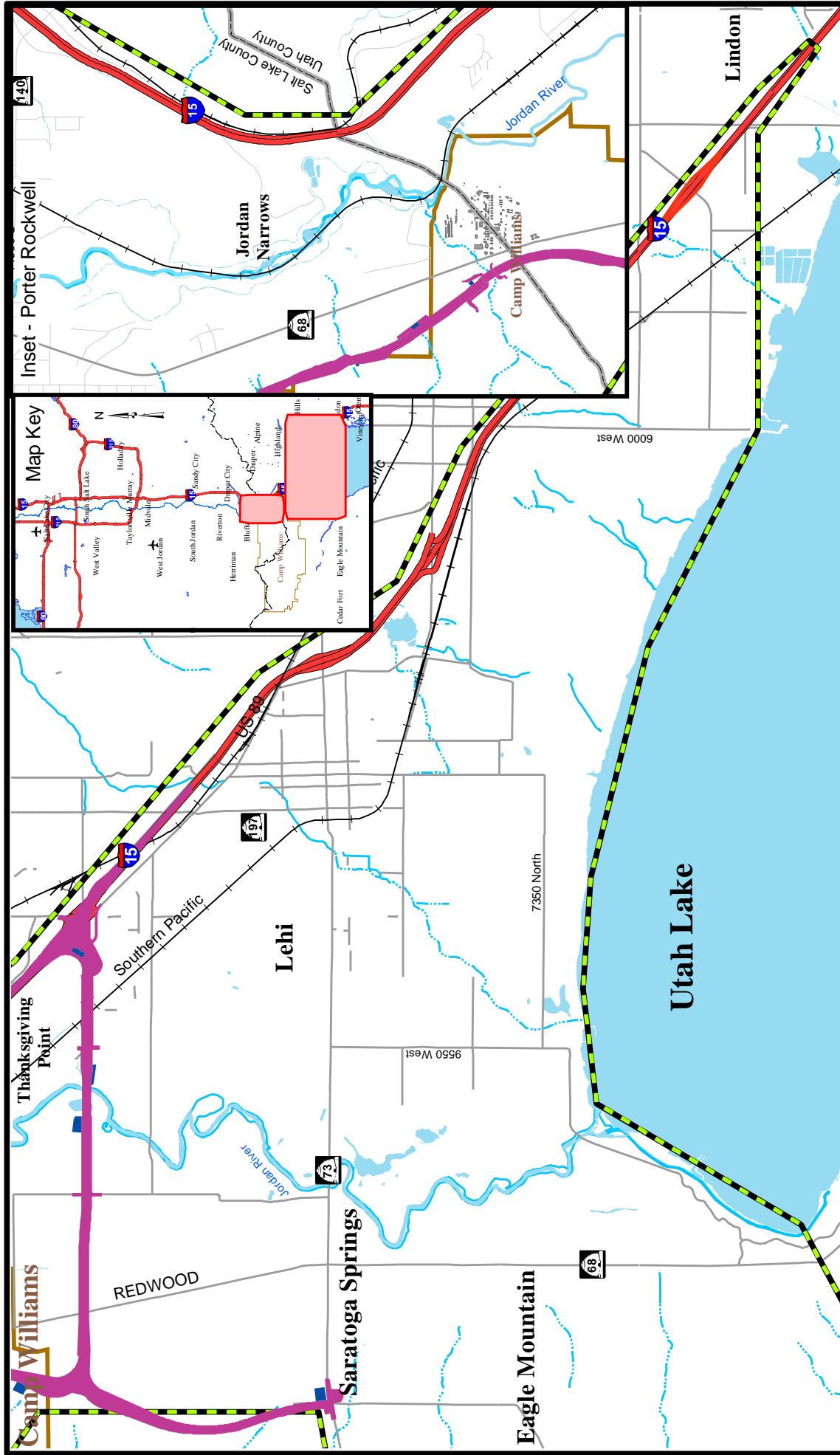
ENVIRONMENTAL
IMPACT STATEMENT

- Study Area Boundary
- Interstate/Freeway
- Collector/Arterial
- Southern Freeway Alternative
- Detention Pond
- Open Water
- Stream
- Intermittent Stream



Proposed Detention
Pond Locations -
Southern Freeway
Alternative

Figure 14-11

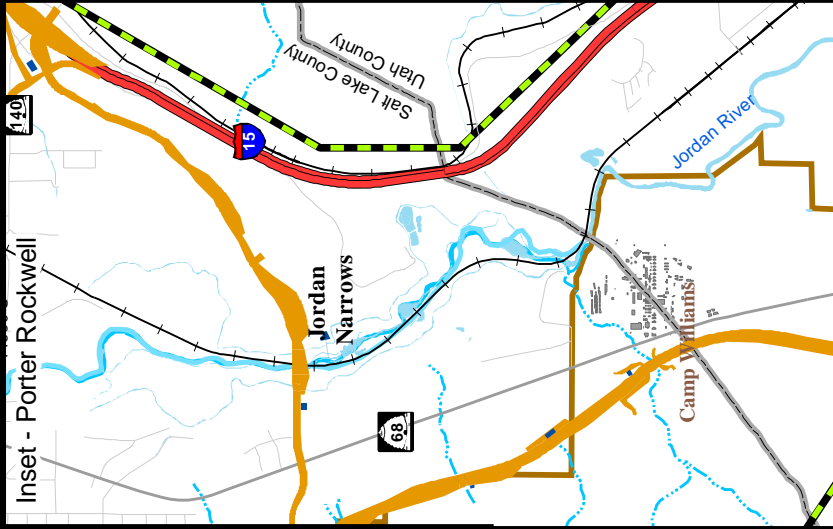
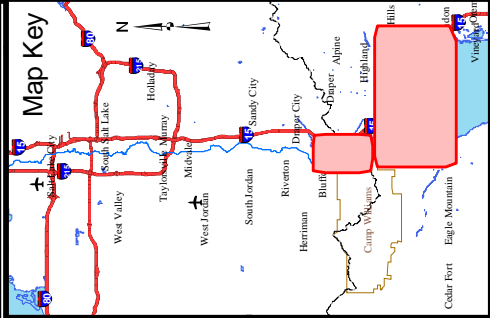
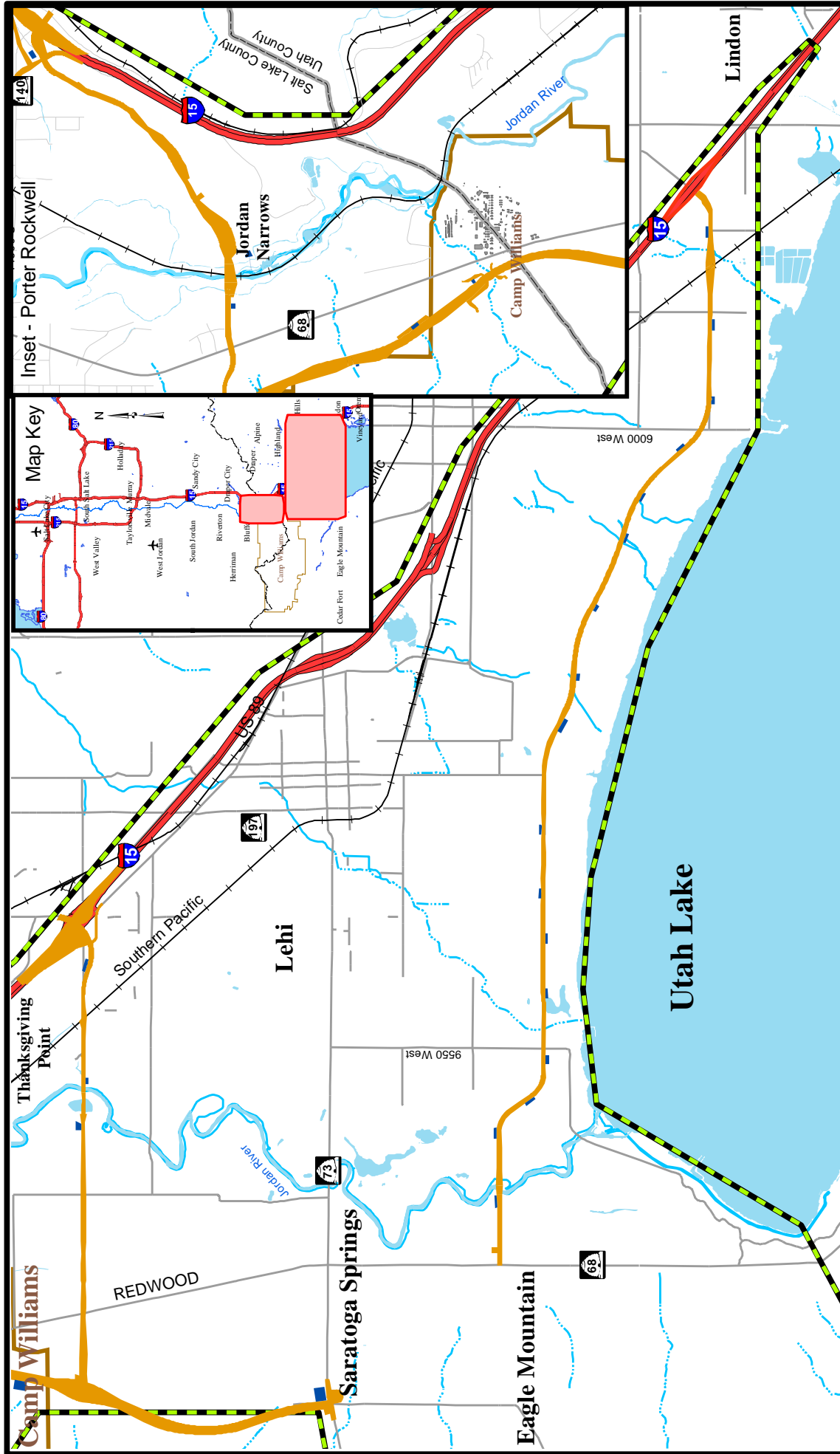


**Proposed Detention
Pond Locations -
2100 North Freeway
Alternative**

Figure 14-12

	Study Area Boundary		Open Water		
	Interstate/Freeway		Stream		
	Collector/Arterial		Intermittent Stream		
	2100 North Freeway				
	Detention Pond				

**ENVIRONMENTAL
IMPACT STATEMENT**



- Study Area Boundary
- Interstate/Freeway
- Collector/Arterial
- Arterials
- Detention Pond
- Open Water
- Stream
- Intermittent Stream



Proposed Detention
Pond Locations -
Arterials Alternative

Figure 14-13