

**Final Environmental Impact Statement
and
Section 4(f) Evaluation**

September 2008

Submitted pursuant to 42 U.S.C. 4332(2)(c) and 49 U.S.C. 303

by

Federal Highway Administration
Utah Department of Transportation
Utah Transit Authority

FHWA-UT-EIS-07-02-F

*SP-0067(3)0

Volume 7 of 8

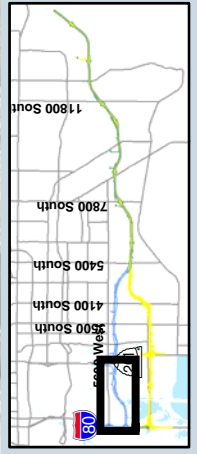
Figures





Noise Analysis -
 5800 West
 I-80 to SR 201

Figure 13-1



Location Map

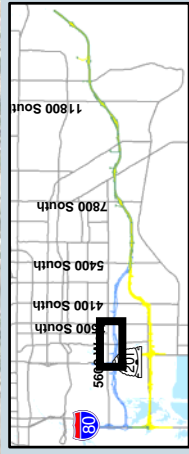
- Legend**
- Both SLC Freeway Alternatives
 - 5800 West Freeway Alternative
 - 7200 West Freeway Alternative
 - 65 dBA Contour
 - Noise Monitoring Locations
 - Noise Walls
 - Not Reasonable and Feasible
 - Reasonable and Feasible





Noise Analysis -
 5800 West
 SR 201 to 3500 South

Figure 13-2

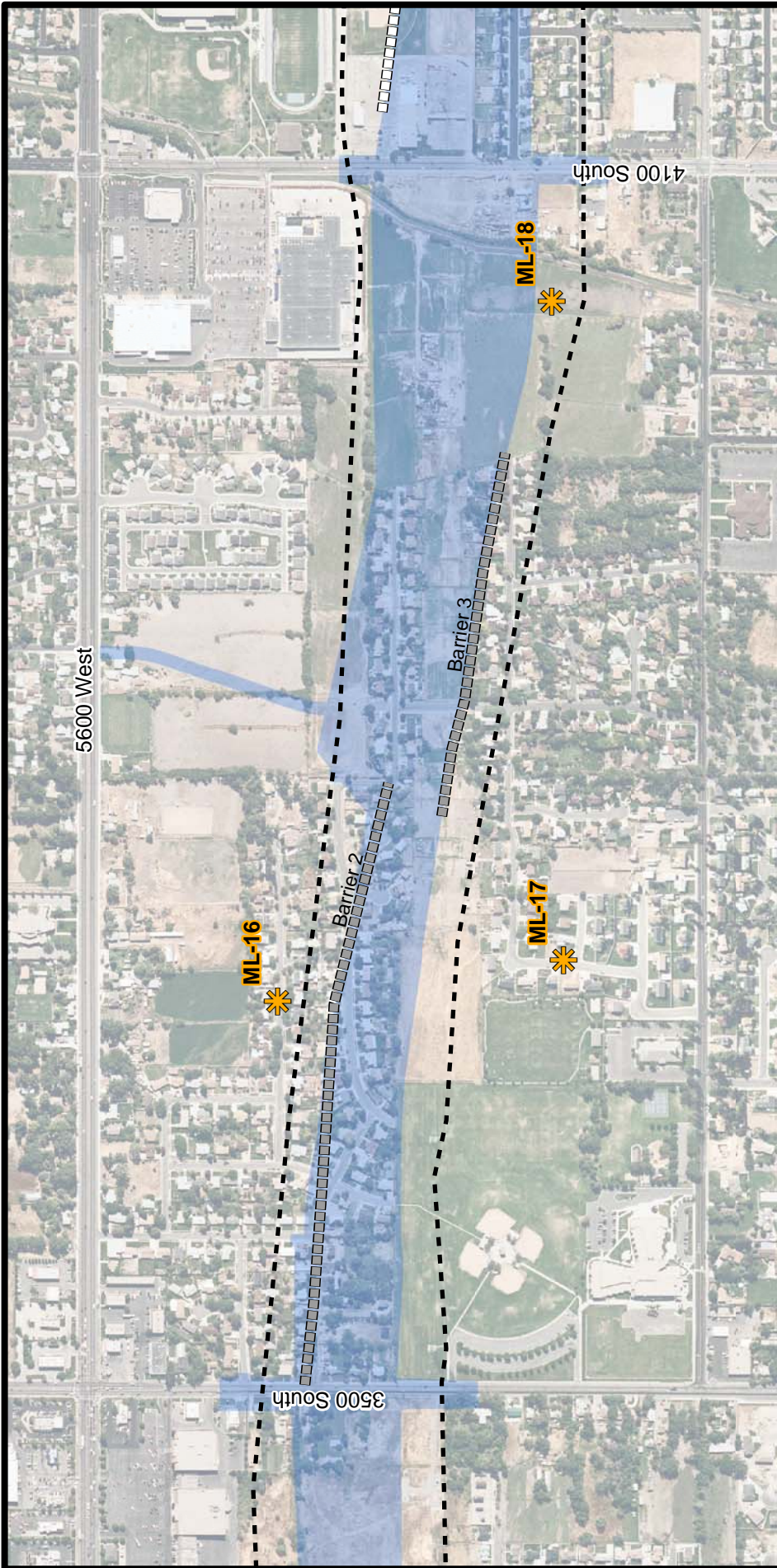


Location Map

- Legend**
- Both SLC Freeway Alternatives
 - 5800 West Freeway Alternative
 - 7200 West Freeway Alternative
 - 65 dBA Contour
 - Noise Monitoring Locations
 - Noise Walls
 - Not Reasonable and Feasible
 - Reasonable and Feasible



MOUNTAIN VIEW
CORRIDOR
 ENVIRONMENTAL
 IMPACT STATEMENT

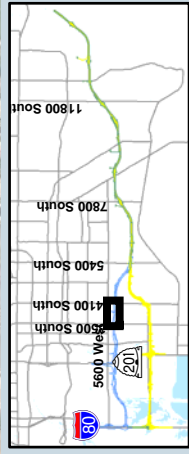


Legend

- 65 dBA Contour
- Noise Monitoring Locations
- Noise Walls
- Not Reasonable and Feasible
- Reasonable and Feasible

Both SLC Freeway Alternatives

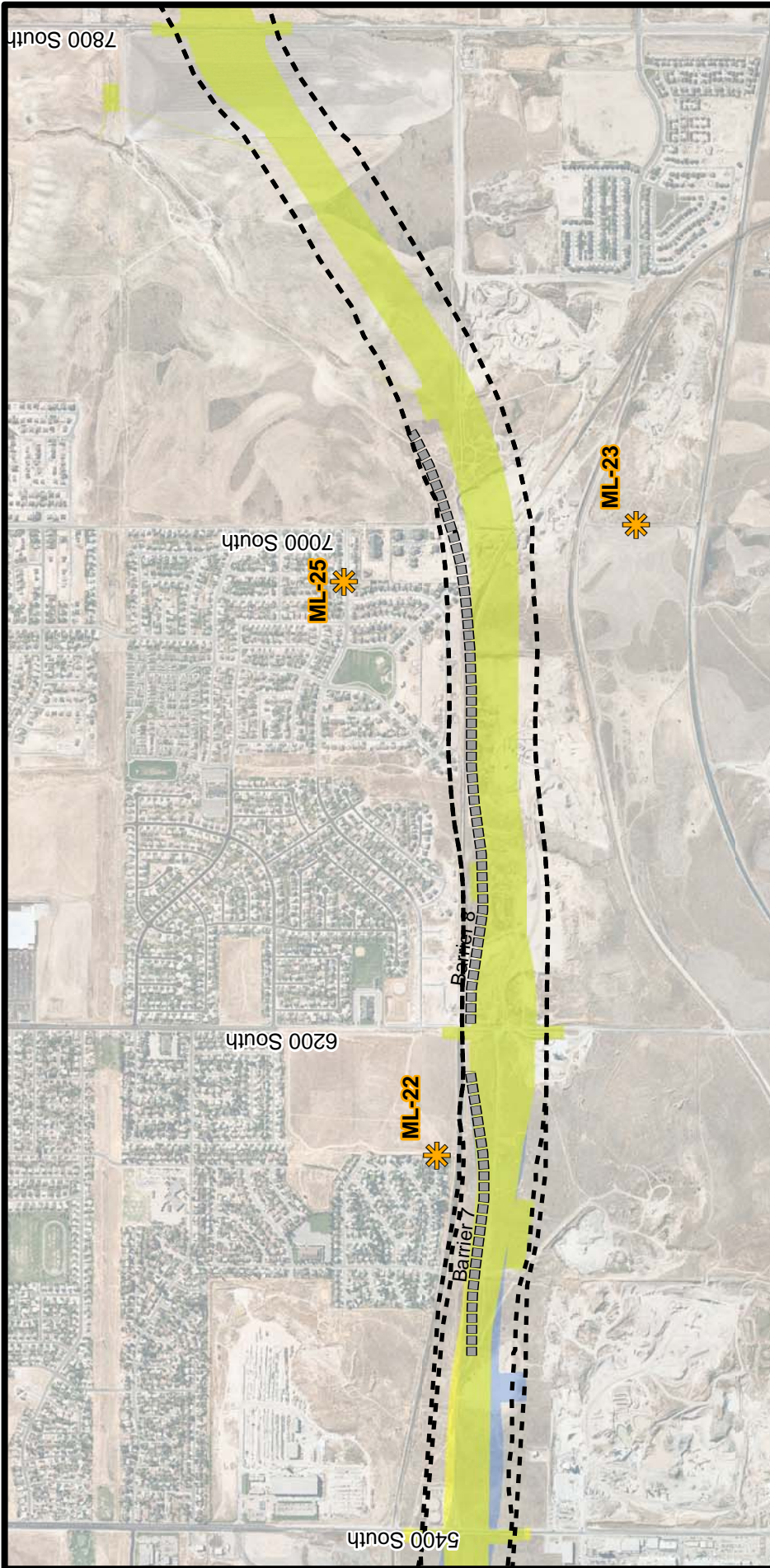
- 5600 West Freeway Alternative
- 7200 West Freeway Alternative



Location Map

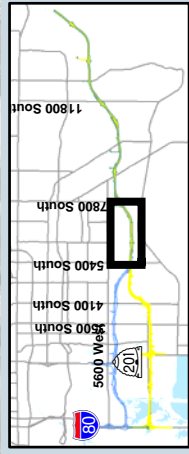
Noise Analysis -
5800 West
3500 South to 4100 South

Figure 13-3



Noise Analysis -
 5800 West
 5400 South to 7800 South

Figure 13-5



Location Map

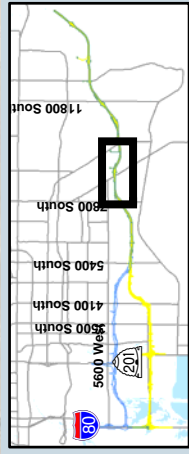
- Legend**
- Both SLC Freeway Alternatives
 - 5800 West Freeway Alternative
 - 7200 West Freeway Alternative
 - 65 dBA Contour
 - Noise Monitoring Locations
 - Noise Walls
 - Not Reasonable and Feasible
 - Reasonable and Feasible





Noise Analysis -
 5800 West
 7800 South to Old Bingham Hwy

Figure 13-6



Location Map

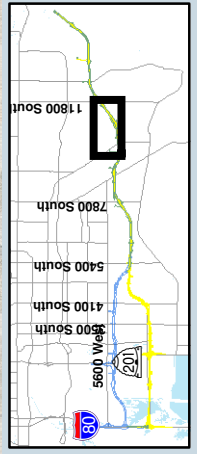
- Legend**
- Both SLC Freeway Alternatives
 - 5800 West Freeway Alternative
 - 7200 West Freeway Alternative
 - 65 dBA Contour
 - Noise Monitoring Locations
 - Noise Walls
 - Not Reasonable and Feasible
 - Reasonable and Feasible





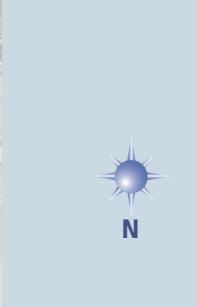
Noise Analysis -
5800 West
 Old Bingham Hwy to 11800 South

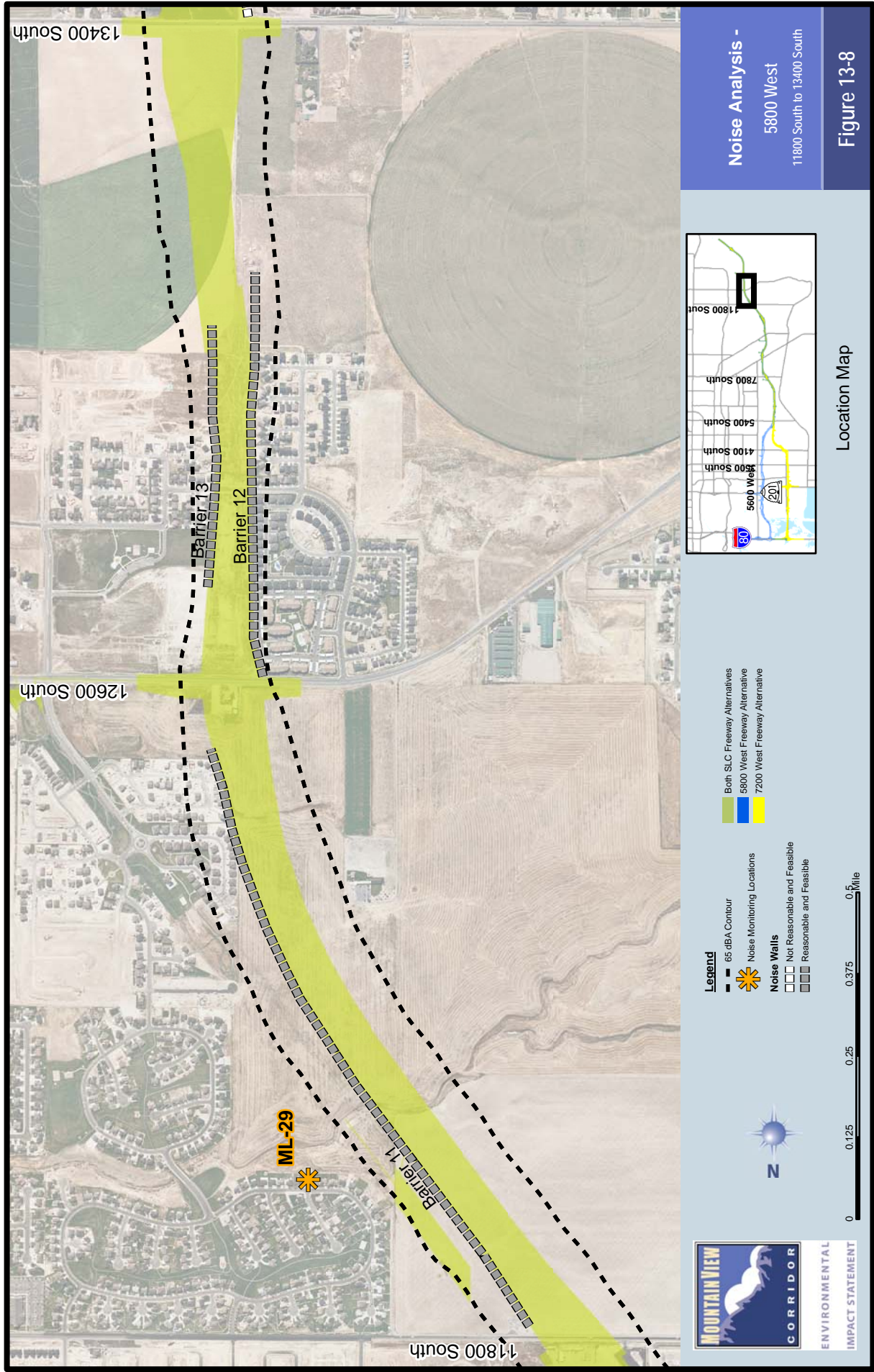
Figure 13-7



Location Map

- Legend**
- Both SLC Freeway Alternatives
 - 5800 West Freeway Alternative
 - 7200 West Freeway Alternative
 - 65 dBA Contour
 - Noise Monitoring Locations
 - Noise Walls
 - Not Reasonable and Feasible
 - Reasonable and Feasible

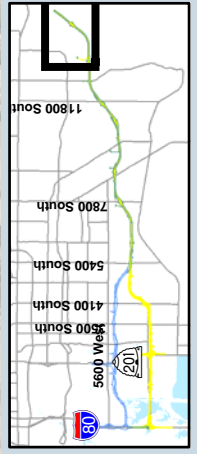






Noise Analysis -
 5800 West
 13400 South to Utah County

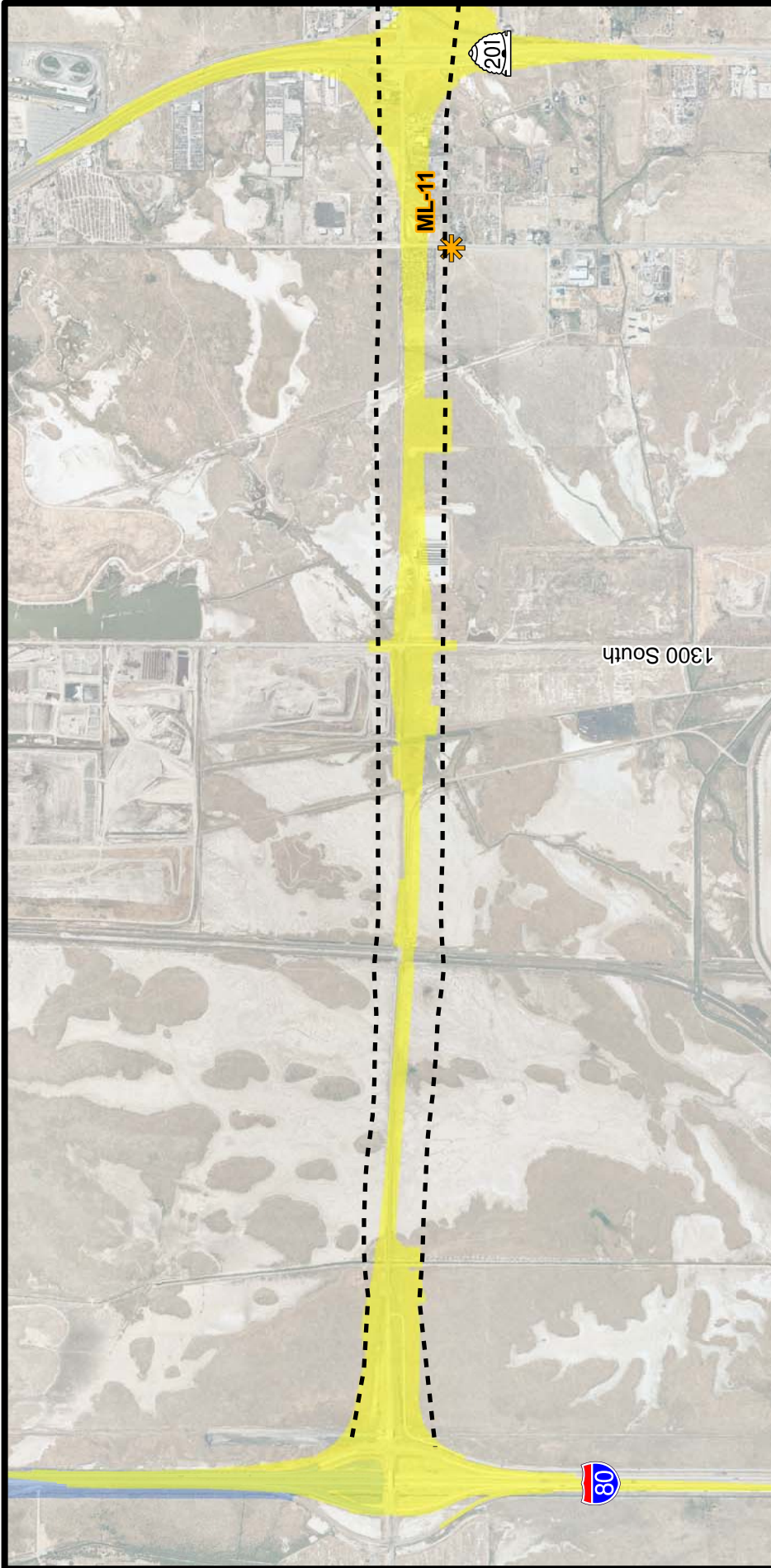
Figure 13-9



Location Map

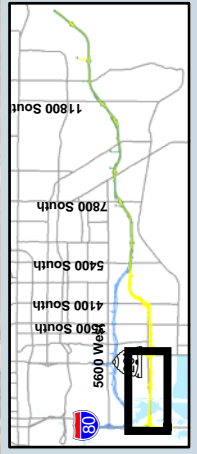
- Legend**
- Both SLC Freeway Alternatives
 - 5800 West Freeway Alternative
 - 7200 West Freeway Alternative
 - 65 dBA Contour
 - Noise Monitoring Locations
 - Noise Walls
 - Not Reasonable and Feasible
 - Reasonable and Feasible

MOUNTAIN VIEW
CORRIDOR
 ENVIRONMENTAL
 IMPACT STATEMENT



Noise Analysis -
 7200 West
 I-80 to SR 201

Figure 13-10



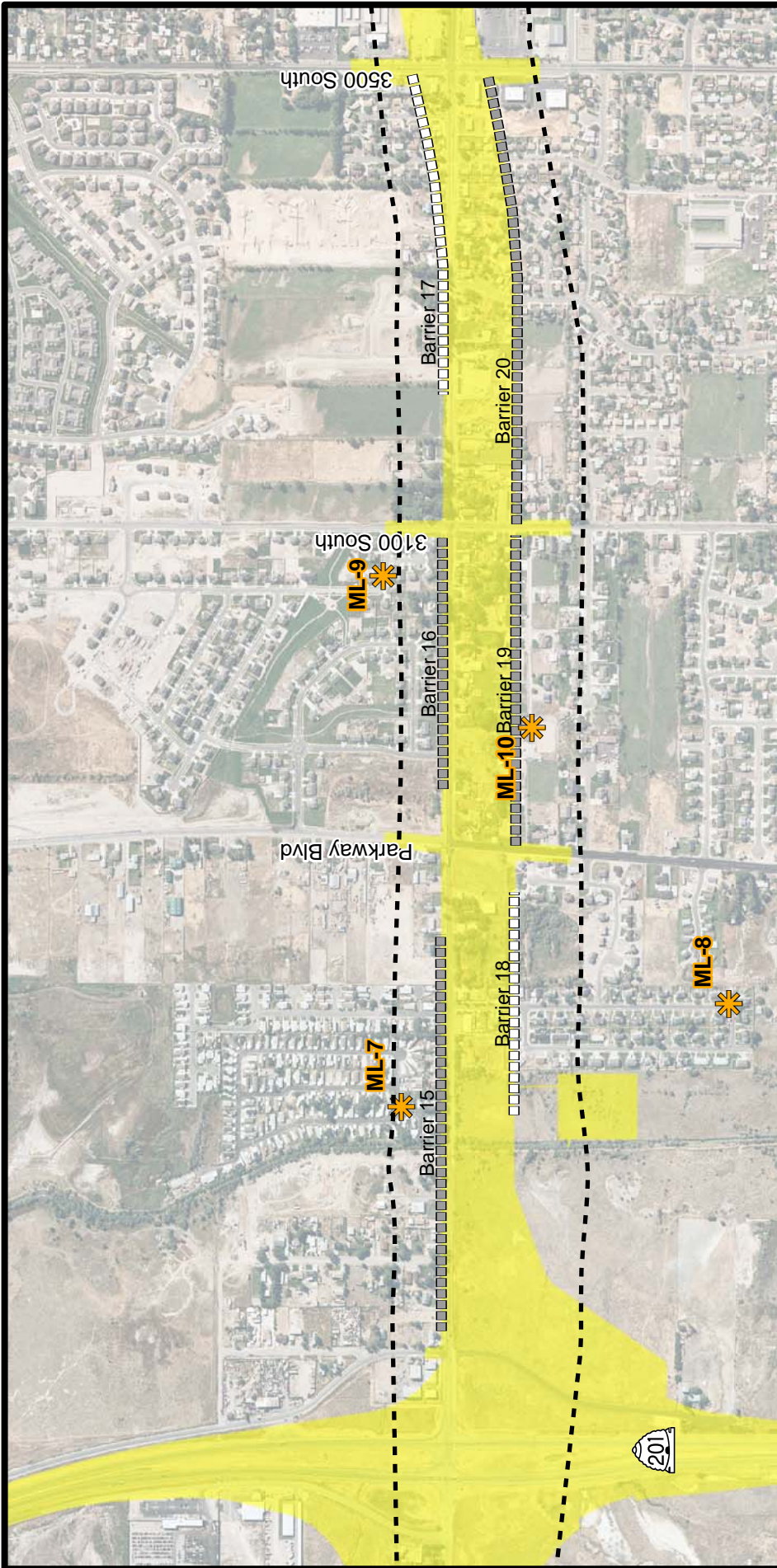
Location Map

- Legend**
- Both SLC Freeway Alternatives
 - 5600 West Freeway Alternative
 - 7200 West Freeway Alternative
 - 65 dBA Contour
 - Noise Monitoring Locations
 - Noise Walls
 - Not Reasonable and Feasible
 - Reasonable and Feasible



ENVIRONMENTAL
 IMPACT STATEMENT





Noise Analysis -
 7200 West
 SR 201 to 3500 South

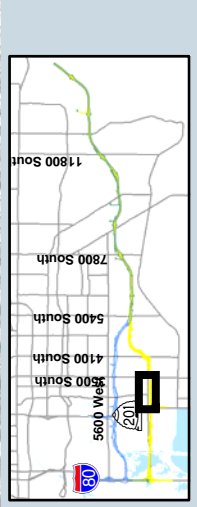


Figure 13-11

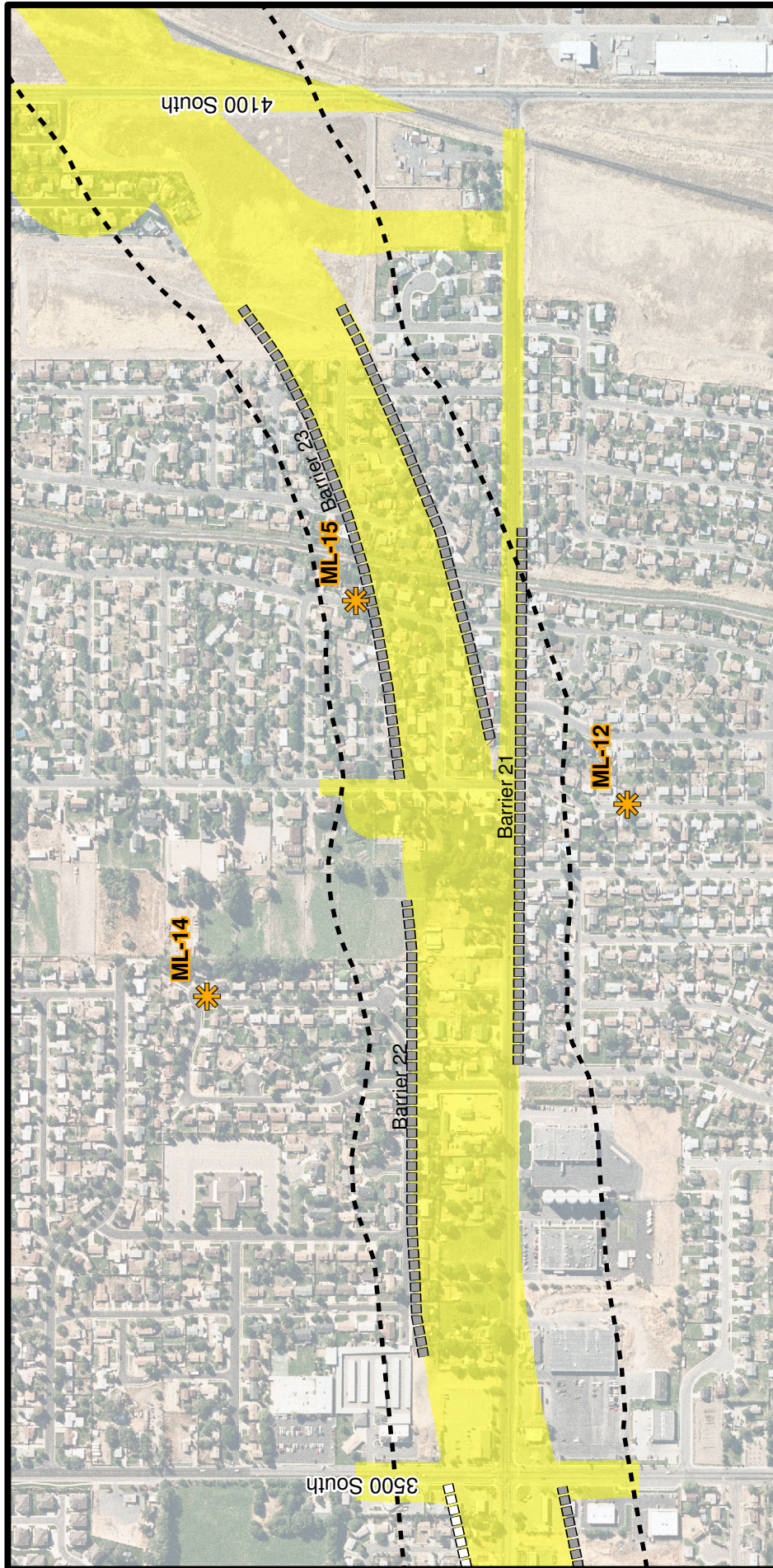
Legend

- Both SLC Freeway Alternatives
- 5600 West Freeway Alternative
- 7200 West Freeway Alternative
- 65 dBA Contour
- Noise Monitoring Locations
- Noise Walls
- Not Reasonable and Feasible
- Reasonable and Feasible

Mountain View
CORRIDOR
 ENVIRONMENTAL
 IMPACT STATEMENT

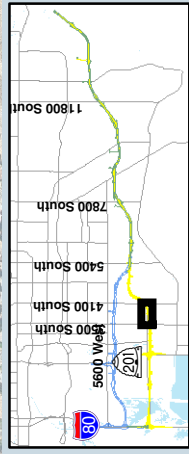
0 0.125 0.25 0.375 0.5
 Mile

Location Map



Noise Analysis -
7200 West
 3500 South to 4100 South

Figure 13-12



Location Map

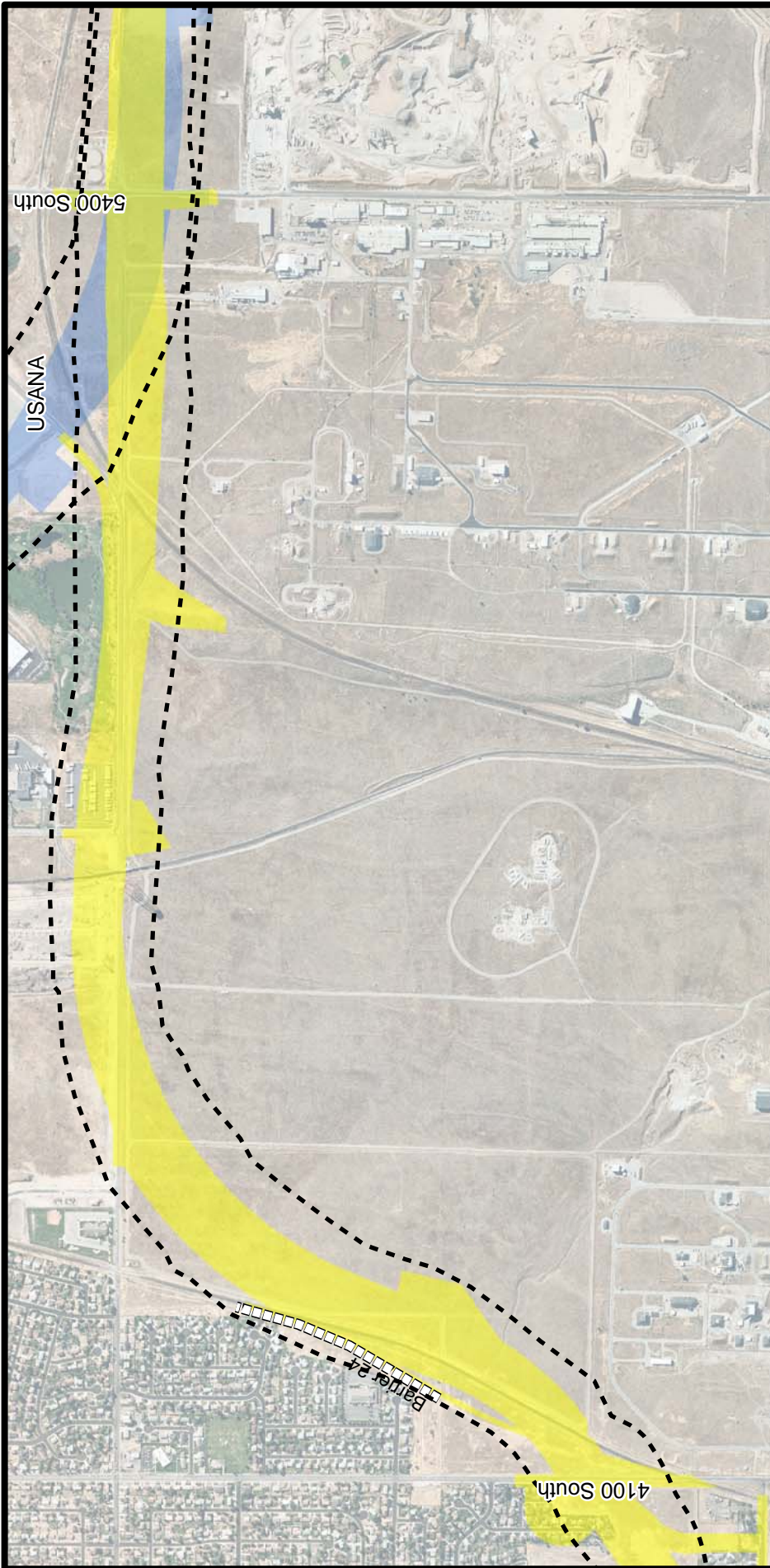
Legend

- Both SLC Freeway Alternatives
- 5600 West Freeway Alternative
- 7200 West Freeway Alternative
- 65 dBA Contour
- Noise Monitoring Locations
- Noise Walls
 - Not Reasonable and Feasible
 - Reasonable and Feasible

0 0.125 0.25 0.375 0.5 Miles

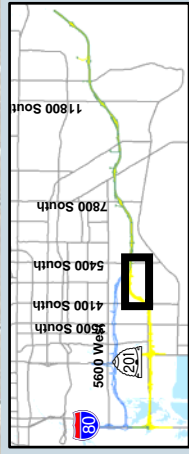


MOUNTAIN VIEW
CORRIDOR
 ENVIRONMENTAL
 IMPACT STATEMENT



Noise Analysis -
 7200 West
 4100 South to 5400 South

Figure 13-13

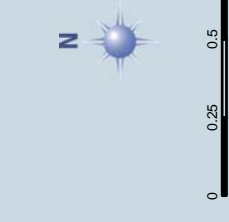
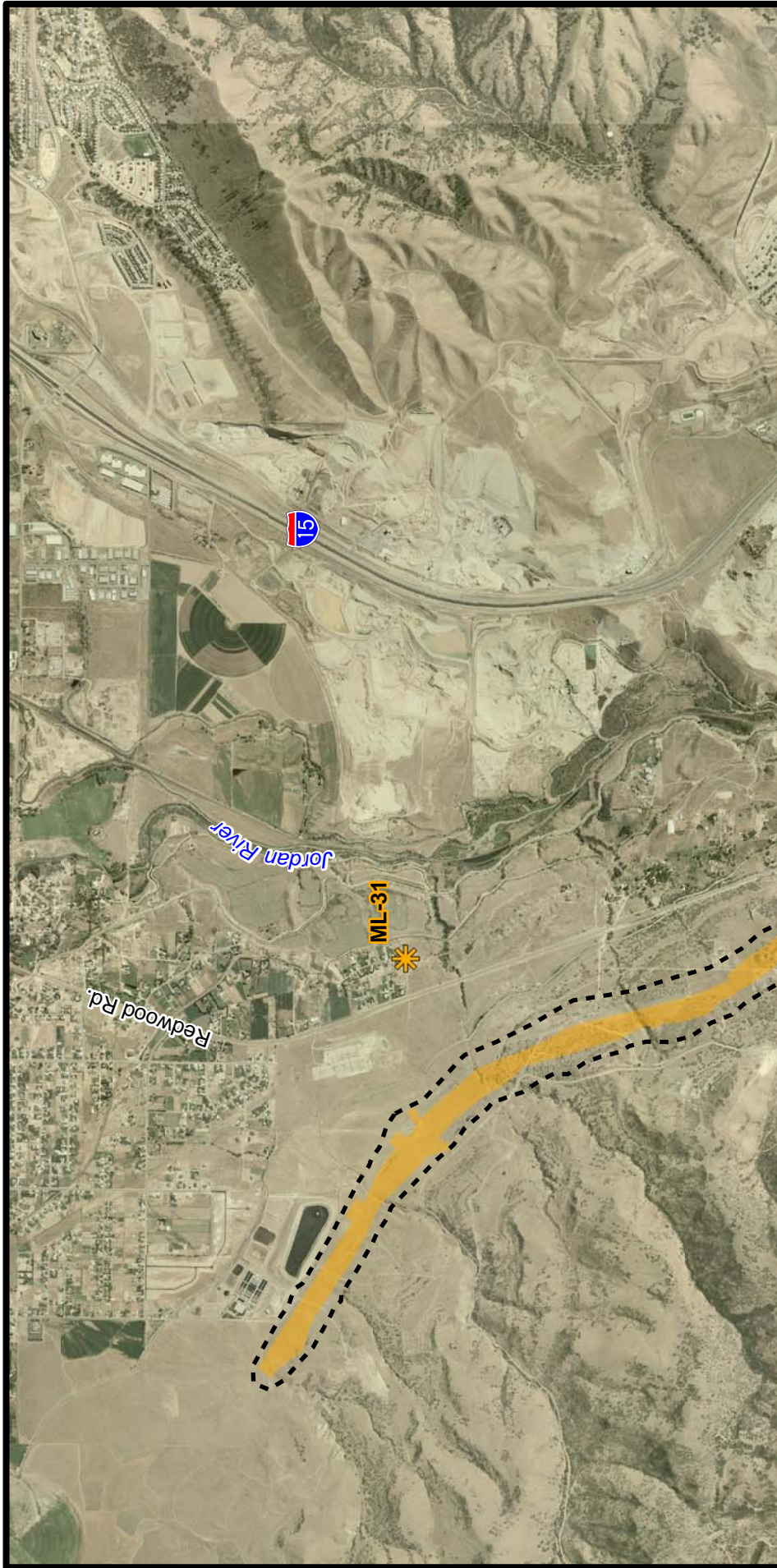


Location Map

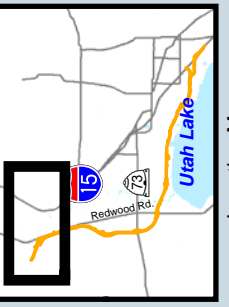
- Legend**
- Both SLC Freeway Alternatives
 - 5600 West Freeway Alternative
 - 7200 West Freeway Alternative
 - 65 dBA Contour
 - Noise Monitoring Locations
 - Noise Walls
 - Not Reasonable and Feasible
 - Reasonable and Feasible



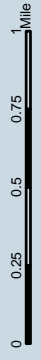
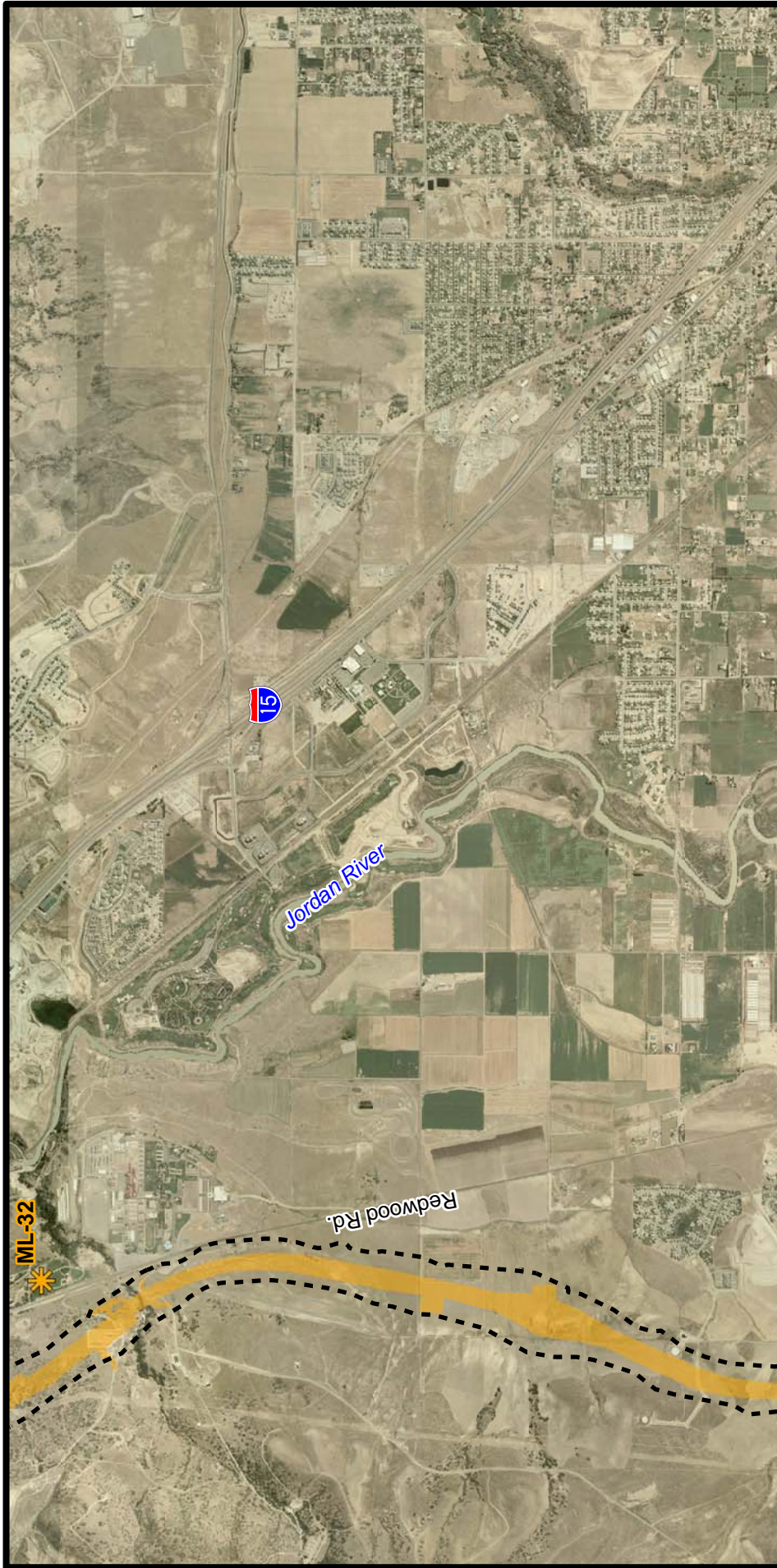
**MOUNTAIN VIEW
 CORRIDOR**
 ENVIRONMENTAL
 IMPACT STATEMENT



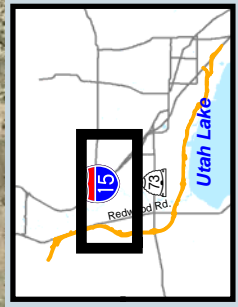
- Legend**
- 65 dBA Contour
 - Noise Monitoring Locations
 - ☀ Noise Walls
 - ☐☐ Not Reasonable and Feasible
 - ☐☐ Reasonable and Feasible
 - Southern Freeway Alternative



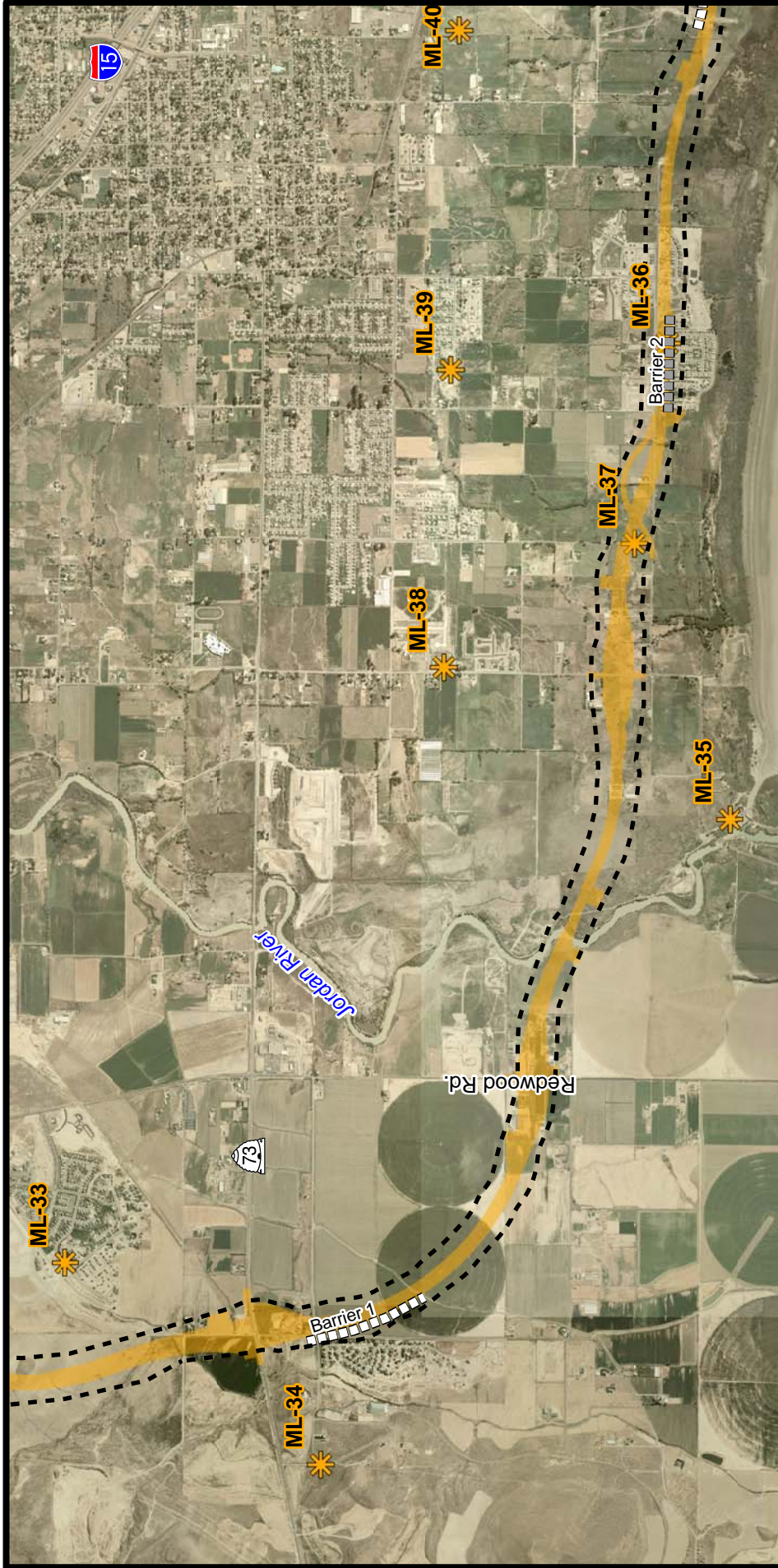
Location Map



- Legend**
- 65 dBA Contour
 - ★ Noise Monitoring Locations
 - Noise Walls
 - Not Reasonable and Feasible
 - Reasonable and Feasible
 - Southern Freeway Alternative



Location Map



**MOUNTAIN VIEW
CORRIDOR
ENVIRONMENTAL
IMPACT STATEMENT**

N

0 0.25 0.5 0.75 1 Mile

Legend

- 65 dBA Contour
- Noise Monitoring Locations
- Noise Walls
- Not Reasonable and Feasible
- Reasonable and Feasible
- Southern Freeway Alternative

Location Map

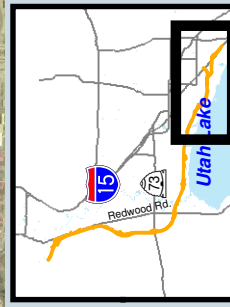
**Noise Analysis -
Southern Freeway
3 of 4**

Figure 13-16



Noise Analysis -
Southern Freeway
4 of 4

Figure 13-17

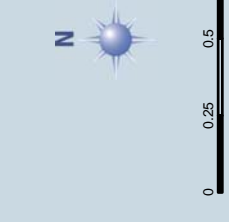
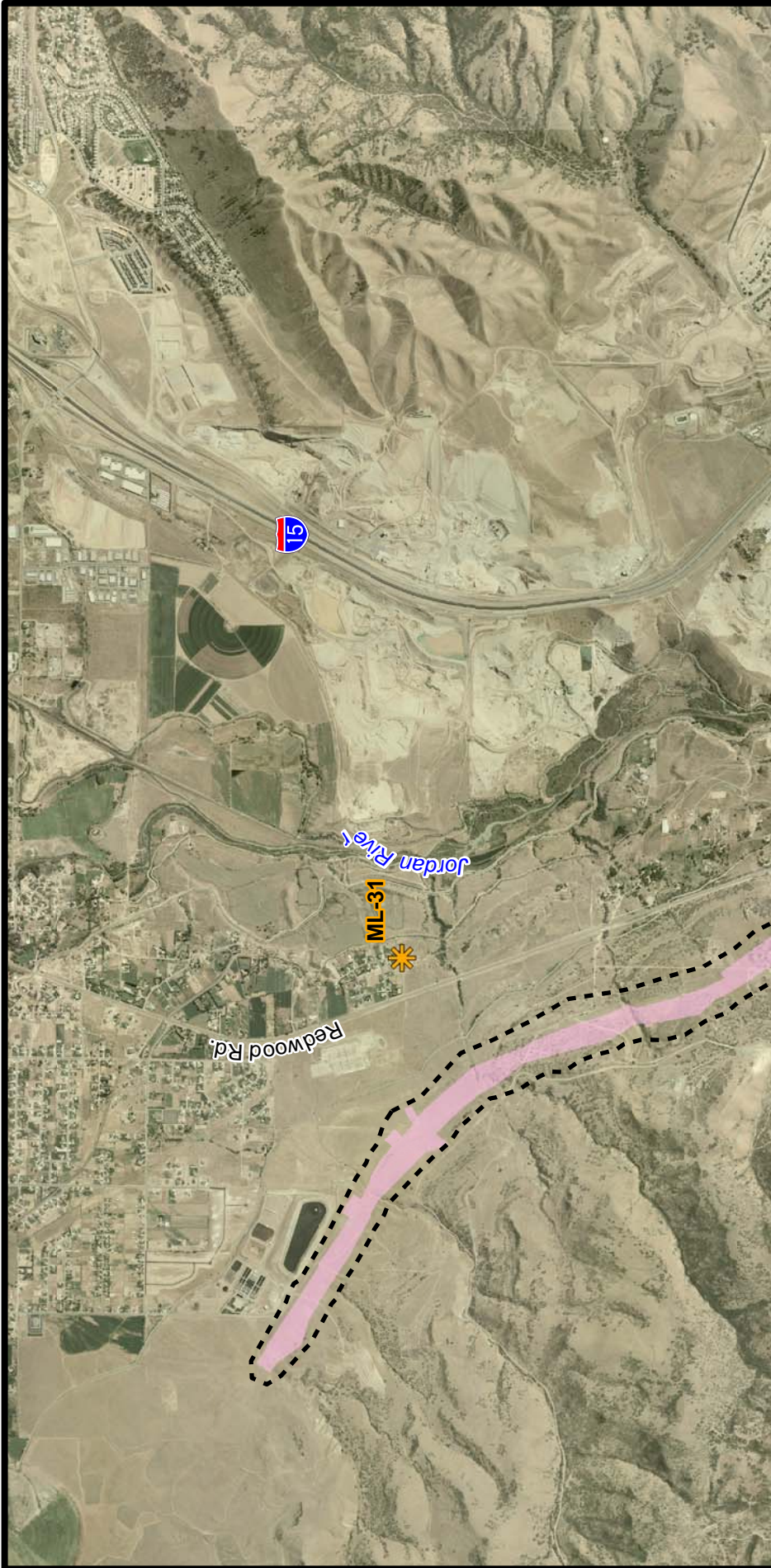


Location Map

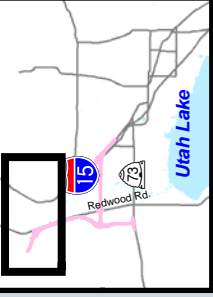
- Legend**
- Southern Freeway Alternative
 - 66 dBA Contour
 - Noise Monitoring Locations
 - Noise Walls**
 - Not Reasonable and Feasible
 - Reasonable and Feasible



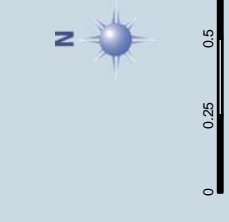
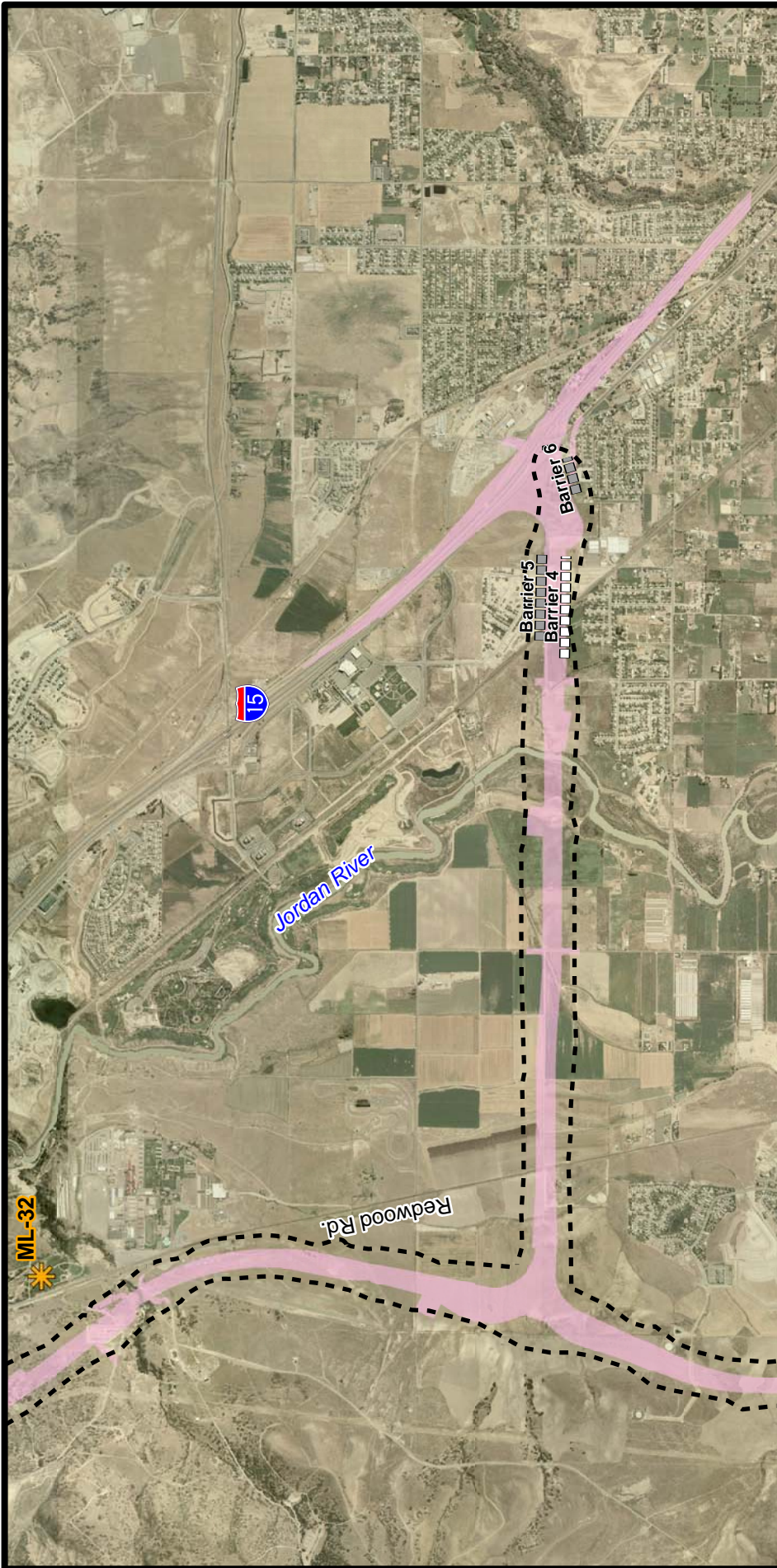
ENVIRONMENTAL
IMPACT STATEMENT



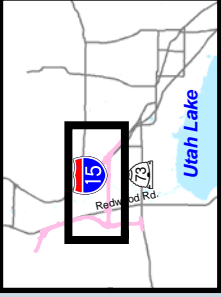
- Legend**
- 65 dBA Contour
 - 2100 North Freeway Alternative
 - Noise Monitoring Locations
 - Noise Walls**
 - Not Reasonable and Feasible
 - Reasonable and Feasible



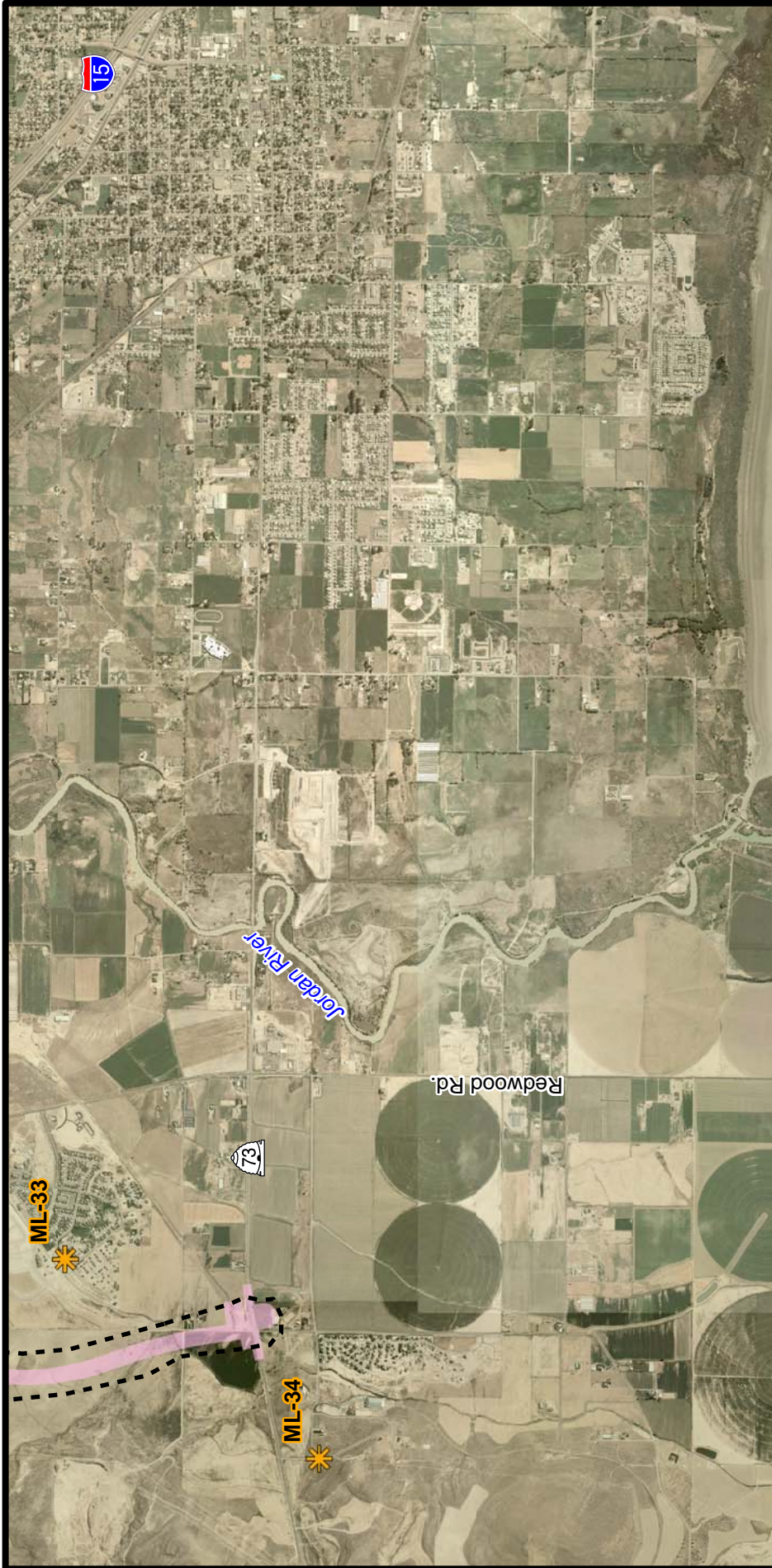
Location Map



- Legend**
- 2100 North Freeway Alternative
 - 65 dBA Contour
 - Noise Monitoring Locations
 - Noise Walls**
 - Not Reasonable and Feasible
 - Reasonable and Feasible



Location Map



Noise Analysis -
2100 North Freeway
3 of 3

Figure 13-20

Location Map

65 dBA Contour

Noise Monitoring Locations

Noise Walls

2100 North Freeway Alternative

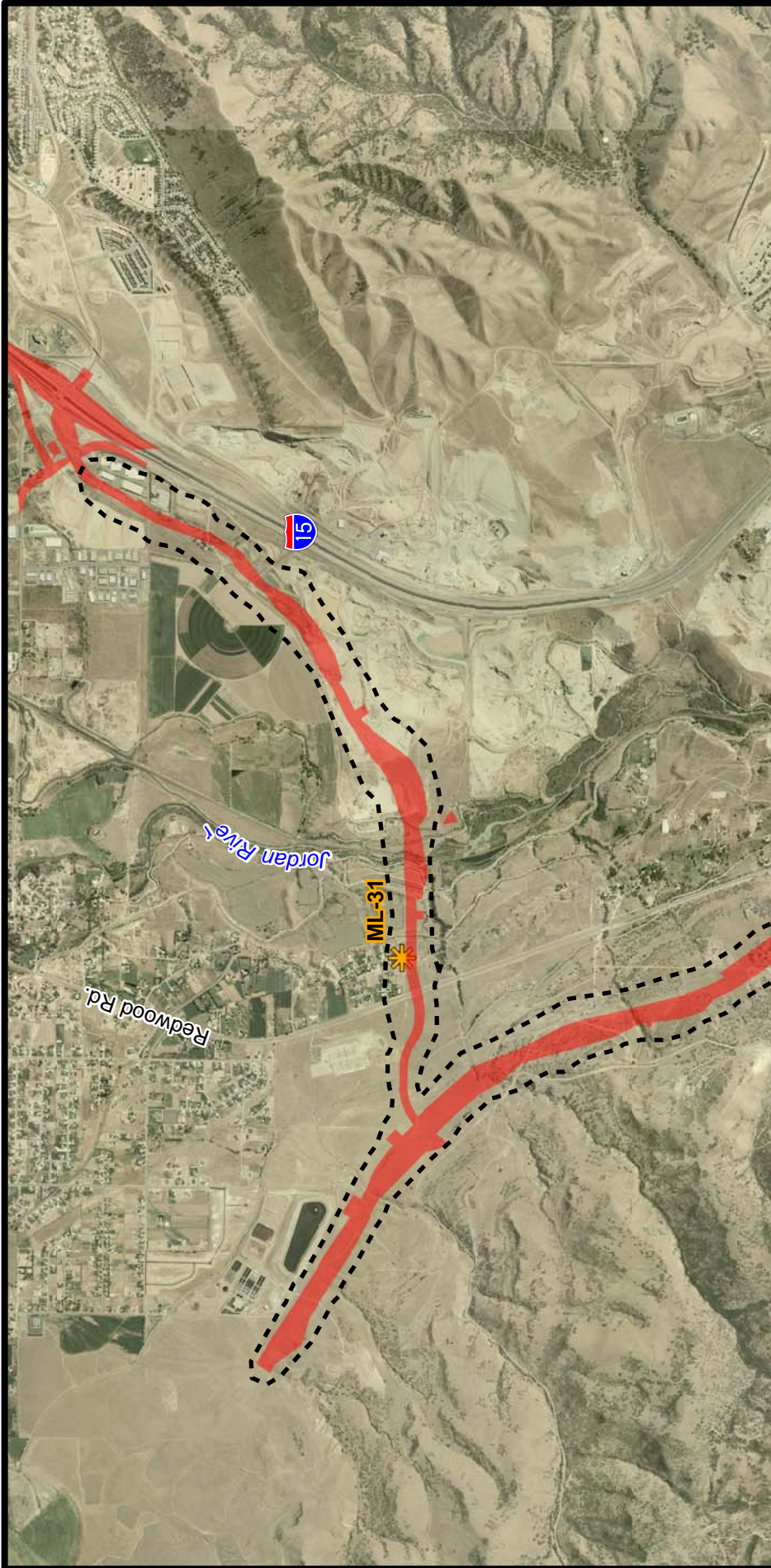
Not Reasonable and Feasible

Reasonable and Feasible

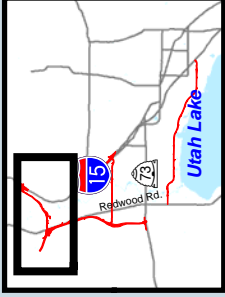
0 0.25 0.5 0.75 1 Mile

N

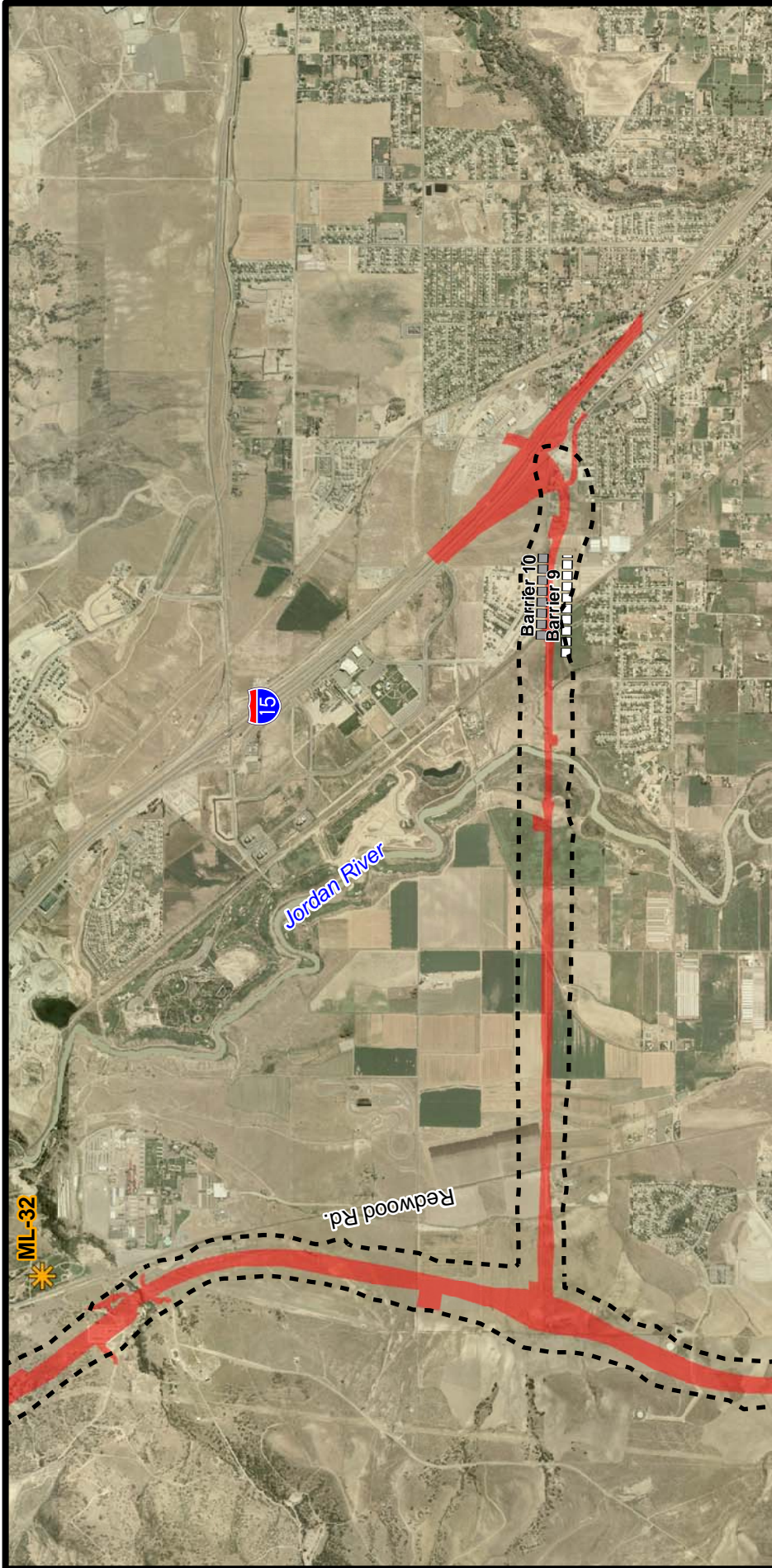
MOUNTAIN VIEW
CORRIDOR
ENVIRONMENTAL
IMPACT STATEMENT



- Legend**
- 65 dBA Contour
 - Noise Monitoring Locations
 - Noise Walls**
 - Not Reasonable and Feasible
 - Reasonable and Feasible
 - Arterials Alternative

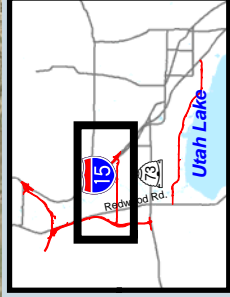


Location Map



Noise Analysis -
Arterials
2 of 4

Figure 13-22



Location Map

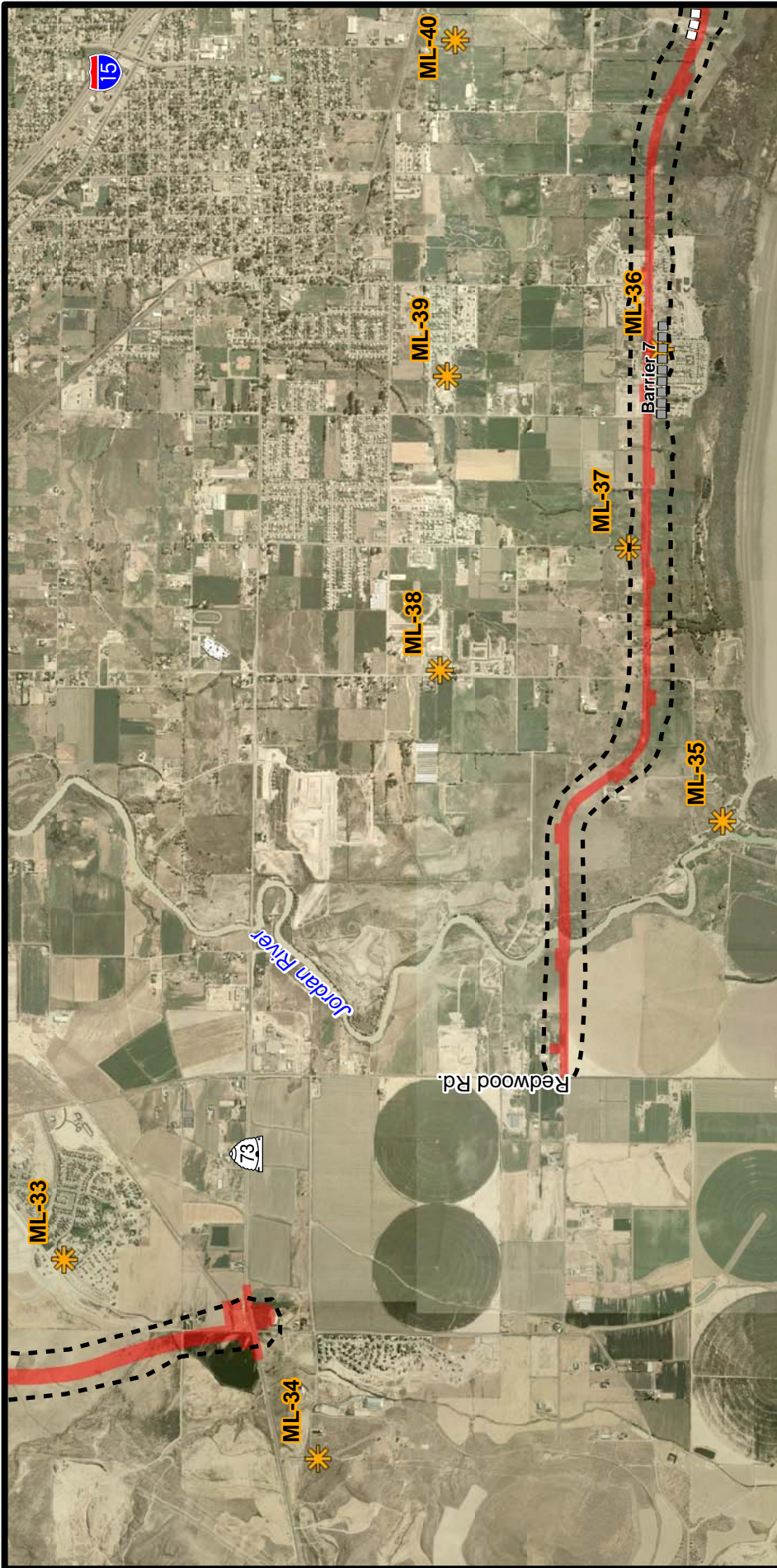
Legend

- Arterials Alternative
- 65 dBA Contour
- Noise Monitoring Locations
- Noise Walls**
 - Not Reasonable and Feasible
 - Reasonable and Feasible

N

0 0.25 0.5 0.75 1 Mile





Mountain View
CORRIDOR
ENVIRONMENTAL
IMPACT STATEMENT

Noise Analysis -
Arterials
3 of 4

Figure 13-23

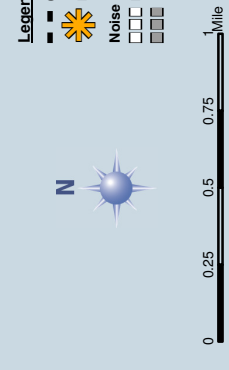
Legend

- Arterials Alternative
- 65 dBA Contour
- Noise Monitoring Locations
- Noise Walls**
- Not Reasonable and Feasible
- Reasonable and Feasible

N

0 0.25 0.5 0.75 1 Mile

Location Map



- Legend**
- 65 dBA Contour
 - Noise Monitoring Locations
 - Noise Walls
 - Not Reasonable and Feasible
 - Reasonable and Feasible
 - Arterials Alternative



Location Map

Noise Analysis -
Arterials
4 of 4

Figure 13-24